



Portsea Place, W2

£4,500 Per week

Dexters



Portsea Place, W2

A very stylish and finely finished two bedroom, two bathroom apartment in an attractive period 1930's mansion building.

This mansion flat has two bedrooms and two bathrooms and a very large and well proportioned living room. The property has solid wooden flooring and high quality fitted wardrobes, shelves and cupboards. The building is portered and has a lift. The apartment also has a balcony.

Portsea Hall is located close to the shops and restaurants of Connaught Village and Hyde Park. Marble Arch and Paddington are the closest stations.

Features

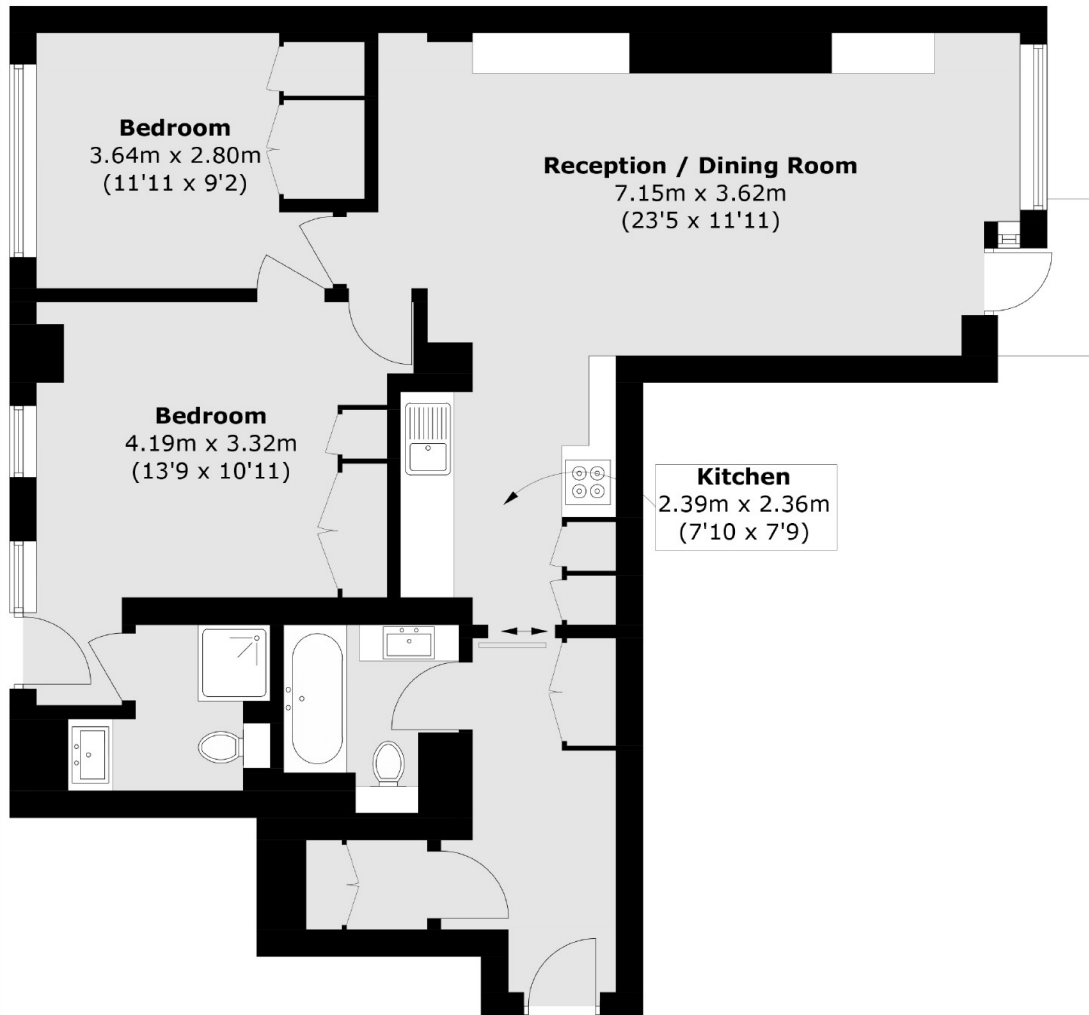
- Two Bedroom
- Two bathrooms
- Portered Block
- High Spec
- Lift
- Balcony







Portsea Place, London, W2



Total area (approx.): 76.4 sq. m (822.3 sq. ft)