



Guide Price
£350,000

Freehold

4x  3x  1x 

**Ruth Street, All Saints
Garden, Chatham, Kent,
ME4**

OVER 60?

Secure this property
for up to **59% less!**

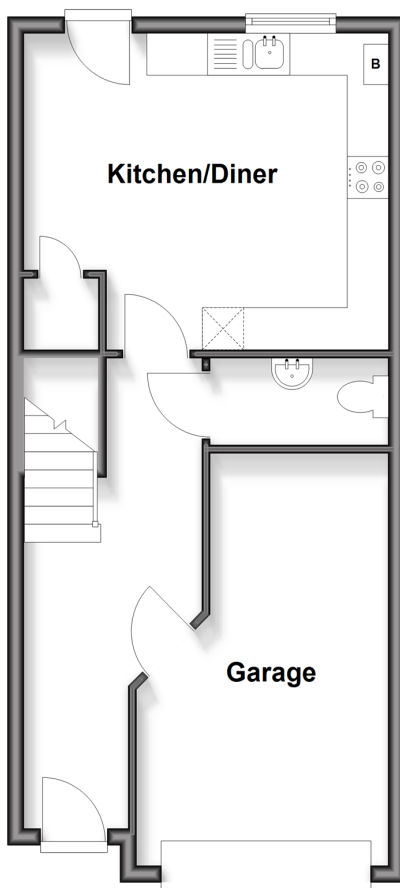


Virtual Reality Tour available

Wards
Helping you move forwards

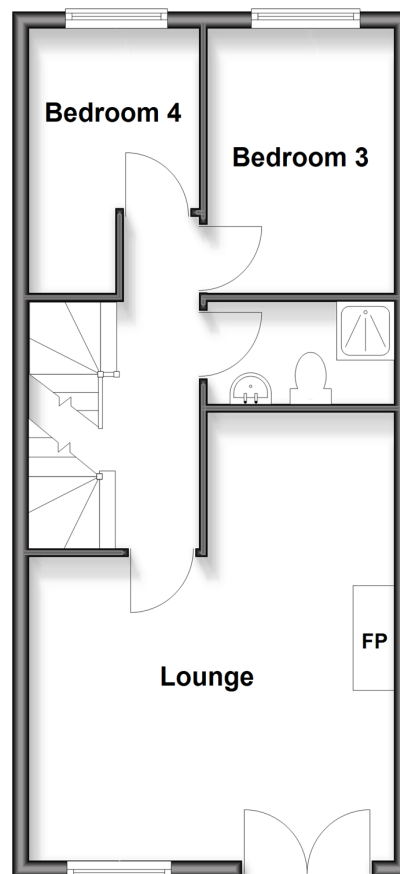
Ground Floor

Approx. 43.5 sq. metres (467.8 sq. feet)



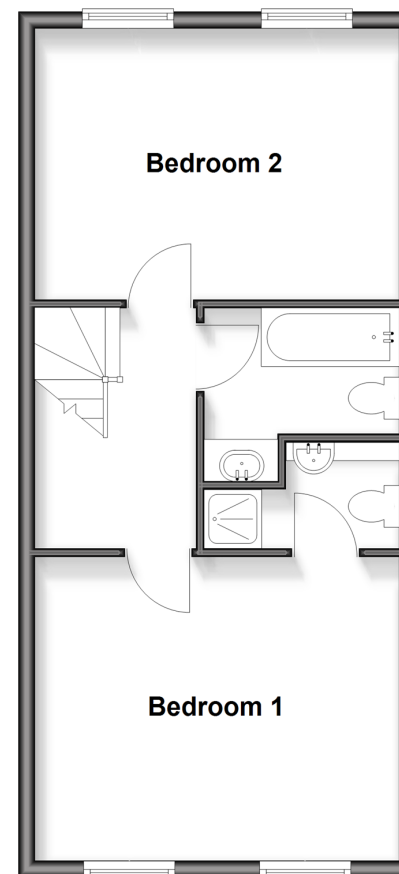
First Floor

Approx. 44.1 sq. metres (474.3 sq. feet)



Second Floor

Approx. 44.1 sq. metres (474.3 sq. feet)



Accommodation

GROUND FLOOR

Entrance Hallway

Kitchen: 14'5 x 12'4 (4.40m x 3.76m)

Cloakroom: 7'2 x 3'5 (2.19m x 1.04m)

Integral Garage: 16'9 x 9'9 (5.11m x 2.97m)

FIRST FLOOR

Landing

Lounge: 16'4 x 14'4 (4.98m x 4.37m)

Bedroom 3: 11'4 x 7'5 (3.46m x 2.26m)

Bedroom 4: 10'4 x 6'9 (3.15m x 2.06m)

Shower Room: 6'8 x 4'2 (2.03m x 1.27m)

SECOND FLOOR

Landing

Bedroom 1: 14'5 x 11'11 (4.40m x 3.63m)

En-suite Shower Room: 4'7 x 4'3 (1.40m x 1.30m)

Bedroom 2: 14'5 x 10'4 (4.40m x 3.15m)

Bathroom

OUTSIDE

Driveway

Rear Garden



Main features

- Modern town house with garage
- 3 bathrooms and downstairs cloakroom
- Spacious rooms with separate lounge and kitchen/diner
- Great location for schools, commuters and local amenities
- Perfect for first time buyers or young families that need space



Nearest Schools

Primary Schools: Phoenix Junior Academy 0.1 miles, All Saints C of E Primary, Chatham 0.2 miles, New Road School 0.2 miles
Secondary Schools: Victory Academy 0.3 miles, Brompton Academy 0.6 miles, St John Fisher 0.6 miles



Transport Information

Train Stations: Chatham 0.6 miles, Gillingham 1.1 miles, Rochester 1.1 miles



Address

Ruth Street, All Saints Garden, Chatham, Kent, ME4



Directions

For directions to this property please contact us.



Wards
Helping you move forwards

Call Chatham Branch 01634 841243 ■ wardsofkent.co.uk



■ Legal advice should be taken to verify fixtures/fittings, planning, alterations and/or lease details ■ Appliances & services are untested, dimensions are approximate and floor plans are not to scale
■ Through a Homewise Home For Life Plan people aged 60+ can secure this property for up to 50% less, by purchasing a Lifetime Lease.



10435441/20251128/BC/RC