



## Wheatsheaf Terrace, SW6

£525,000

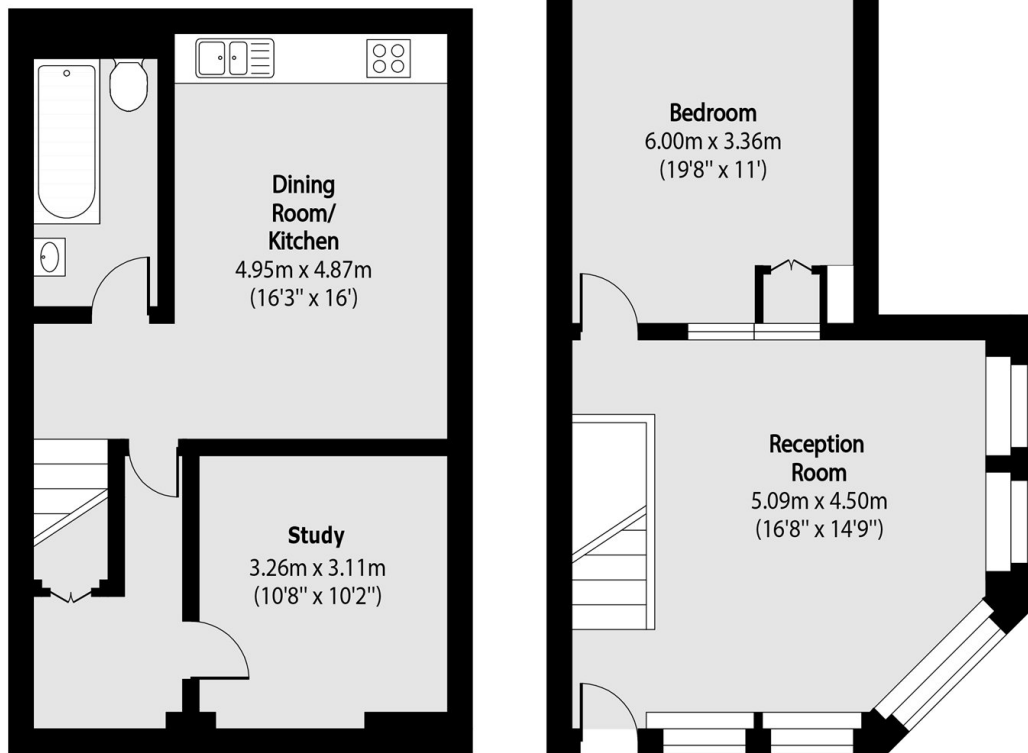
A spacious, well finished, split-level maisonette offering nearly 900 sq ft of bright and versatile living throughout. The property features a dual aspect living room and double bedroom on the ground floor. The lower ground floor comprises of a fully integrated kitchen and dining area; along with an additional room ideal as a study, or guest space. If you want space this is your place.

Located on a quiet residential street, the flat benefits from the amenities and excellent transport links of Fulham Broadway and Parsons Green.

### Features

- One Double Bedroom
- Spacious Kitchen Dining Area
- Dual Aspect Reception Room
- Split Level Maisonette
- Private Entrance
- Chain Free

# Wheatsheaf Terrace, London, SW6



Lower Ground Floor

Ground Floor

Total area (approx): 80.07 sq m (862 sq. ft)