



**Premier  
Properties**  
Perth

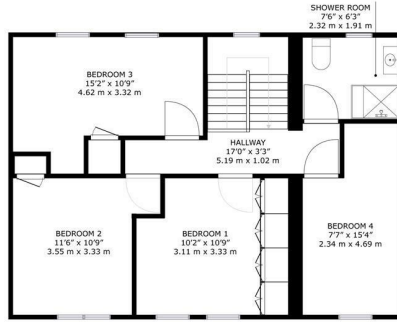
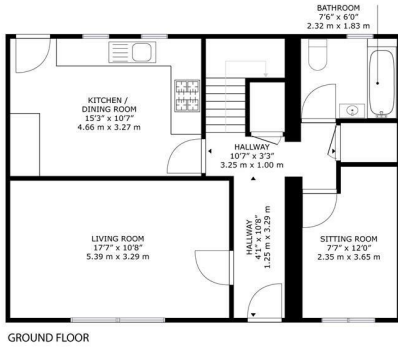


**38 Dunsinane Drive, Perth, PH1 2DU**  
**Offers Over £220,000**

 4  2  2  C



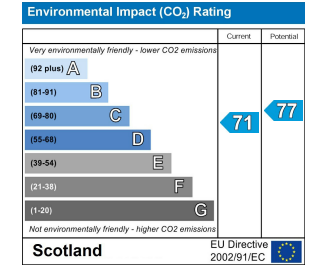
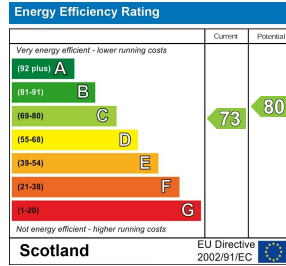
- 4/5 spacious bedrooms
- 2 modern bathrooms
- Rare to the market
- Perfect family home
- Beautifully landscaped garden grounds
- Outside bar
- Viewing recommended



38 Dunsinane Drive, Perth, PH1 2DU

GROSS INTERNAL AREA  
 GROUND FLOOR : 695 sq. ft, 64.6 m<sup>2</sup>, FIRST FLOOR : 682 sq. ft, 63.4 m<sup>2</sup>  
 TOTAL: 1377 sq. ft, 128.0 m<sup>2</sup>

SIZES AND DIMENSIONS ARE APPROXIMATE, ACTUAL MAY VARY.



These particulars, whilst believed to be accurate are set out as a general outline only for guidance and do not constitute any part of an offer or contract. Intending purchasers should not rely on them as statements of representation of fact, but must satisfy themselves by inspection or otherwise as to their accuracy. No person in this firm's employment has the authority to make or give any representation or warranty in respect of the property.