



1



2



1



D



Description

We are pleased to present this charming second-floor maisonette, ideally nestled in the vibrant heart of Worthing just a stone's throw away from an array of local shops, exquisite restaurants, convenient bus routes, and the mainline station.

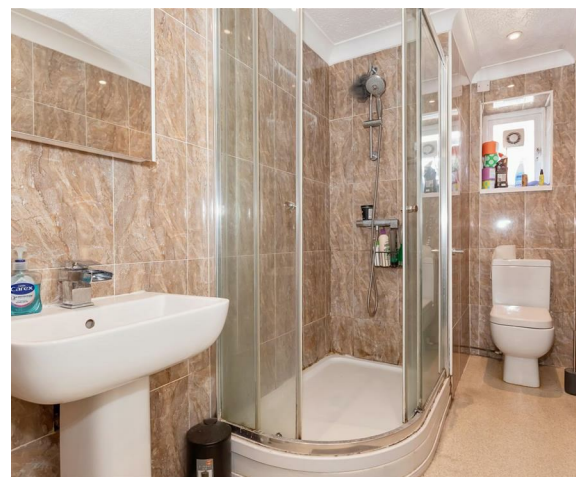
Accommodation offers a spacious lounge, kitchen, two double bedroom and a shower room and benefits from gas fired central heating and a long lease.



Key Features

- Second Floor Masionette
- Shower Room
- Modern Shower Room
- Long Lease
- Two Bedrooms
- Modern Fitted Kitchen
- Gas Fired Central Heating
- Council Tax Band B





Communal Entrance Hall

Communal front door leading to stairs to second floor.

Hallway

Front door. Cupboard housing electric meters. Radiator.

Lounge

5.4 x 5.4 (17'8" x 17'8")
Original sash bay window.
Radiator.

Kitchen

4 x 1.5 (13'1" x 4'11")
A range of modern wall and base units. Built in electric oven and hob with extractor fan over. Space and plumbing for washing machine. Space for fridge/freezer. Radiator.

Shower Room

Fully modern tiled. Walk in shower with shower unit. Extractor fan. Low level flush WC. Pedestal hand wash basin. Heated towel rail. Window.

Landing

Stairs to further floor. Access to loft.

Bedroom One

4.9 x 3.5 (16'0" x 11'5")
Radiator. Eves storage.

Bedroom Two

3.2 x 3.1 (10'5" x 10'2")
Double-glazed window. Radiator.

Tenure

Leasehold - 124 years remaining on the lease. Ground rent £37.50 and Service Charges £900

