

**Floor 1 Building 1**

**Floor 2 Building 1**

**Floor 1 Building 2**

Approximate total area<sup>(1)</sup>  
1080 ft<sup>2</sup>  
100.3 m<sup>2</sup>

(1) Excluding balconies and terraces

Calculations reference the RICS IPMS 3C standard. Measurements are approximate and not to scale. This floor plan is intended for illustration only.

GIRAFFE360

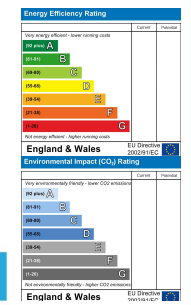


**12 Brynmor Road, Llanelli, SA15 2TG**

- Traditional Online Auction, Time & Date TBC
- Three Bedrooms
- Two Reception Room
- Close To Llanelli Town Center & Beach
- Traditional Mid-terrace Property
- Upstairs Bathroom
- Requires Updating Throughout
- Viewing By Appointment

**£90,000**

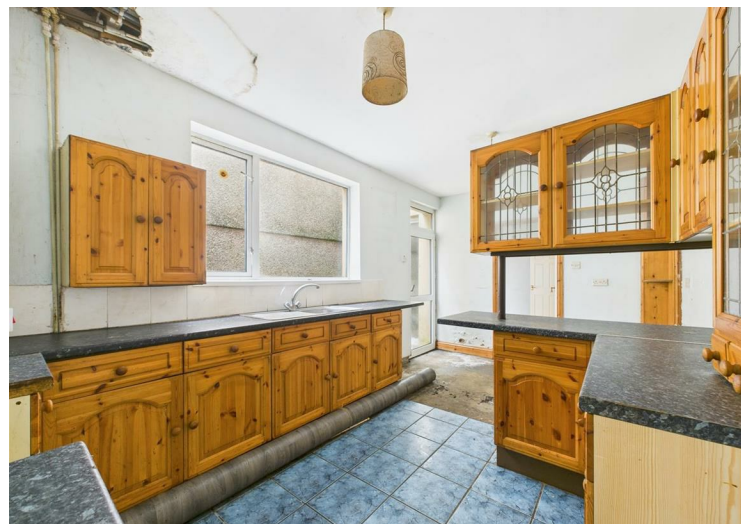
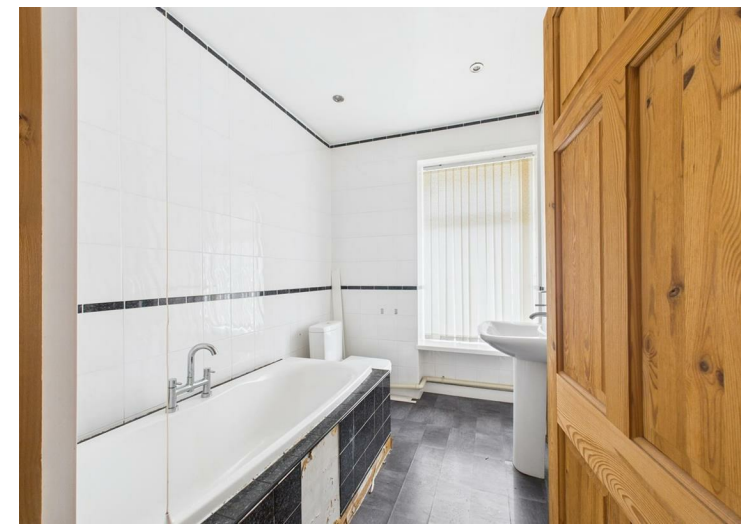
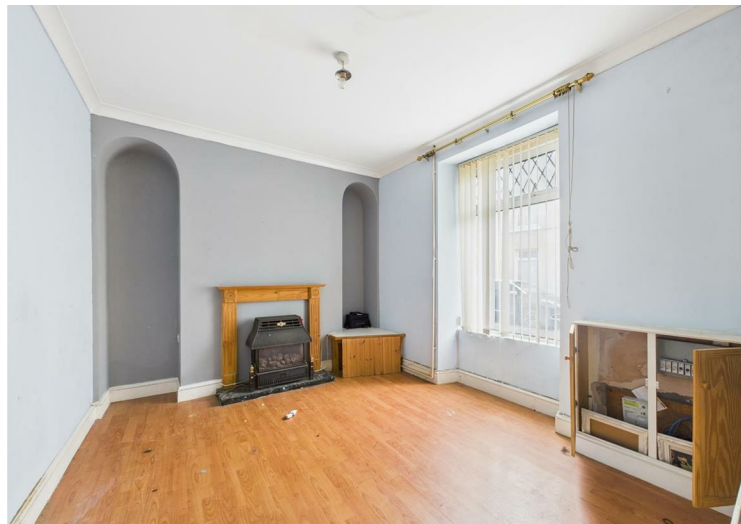
COMPUTER-LINKED OFFICES THROUGHOUT WEST WALES and Associated office in Mayfair, London



WE WOULD LIKE TO POINT OUT THAT OUR PHOTOGRAPHS ARE TAKEN WITH A DIGITAL CAMERA WITH A WIDE ANGLE LENS. These particulars have been prepared in all good faith to give a fair overall view of the property. If there is any point which is of specific importance to you, please check with us first, particularly if travelling some distance to view the property. We would like to point out that the following items are excluded from the sale of the property: Fitted carpets, curtains and blinds, curtain rods and poles, light fittings, sheds, greenhouses - unless specifically specified in the sales particulars. Nothing in these particulars shall be deemed to be a statement that the property is in good structural condition or otherwise. Services, appliances and equipment referred to in the sales details have not been tested, and no warranty can therefore be given. Purchasers should satisfy themselves on such matters prior to purchase. Any areas, measurements or distances are given as a guide only and are not precise. Room sizes should not be relied upon for carpets and furnishings.

Details are correct at the time of listing. We have not seen sight of all building regulations or planning permissions should they be necessary,

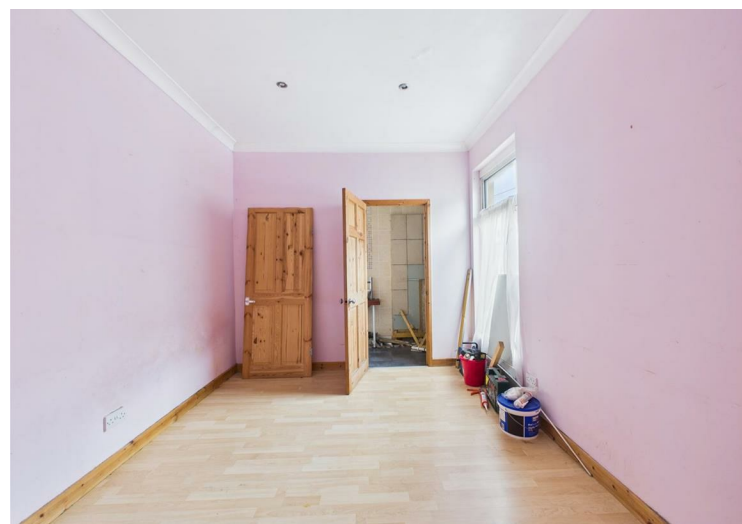
COMPUTER-LINKED OFFICES THROUGHOUT WEST WALES and Associated office in Mayfair, London



\*\*\* AUCTION STARTING SOON! \*\*\*

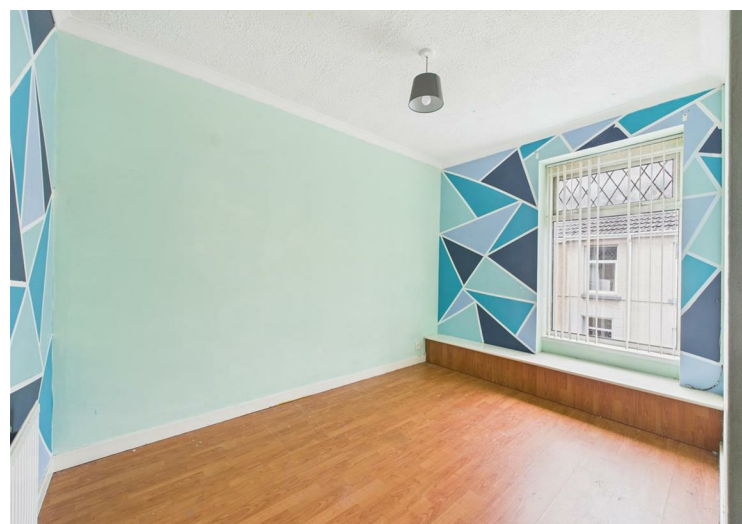
Get ready to bid for this three bedroom mid-terrace property! Located in Llanelli town centre, very close to all the amenities from the shops to the beach we have for sale this ideal little purchase for someone wanting a little project. This property needs some good TLC and would make an ideal family home. Call us today on 01554 759655 to arrange a viewing, or visit the Rocket Auction website!

Accommodation comprises : Vestibule, hallway, sitting room, lounge, spacious kitchen/diner, utility room, landing, bathroom and three bedrooms - the main bedroom has an en-suite facility just needs an en-suite to be fitted! Externally, an enclosed low-maintenance paved garden with secure rear lane access and a spacious storage shed (which needs attention!)



FOR SALE BY AUCTION

..AGENTS VIEWING NOTES



DIRECTIONS

See our website [www.westwalesproperties.co.uk](http://www.westwalesproperties.co.uk) in our TV channel to view our location videos about the area.