



**CLIVEPEARCE**  
Now you're moving

2 Bedrooms

House - Terraced

Asking Price

£130,000

Located in

Truro



[www.clivepearceproperty.com](http://www.clivepearceproperty.com)



# Redannick Lane

Truro | Cornwall | TR1 2XX



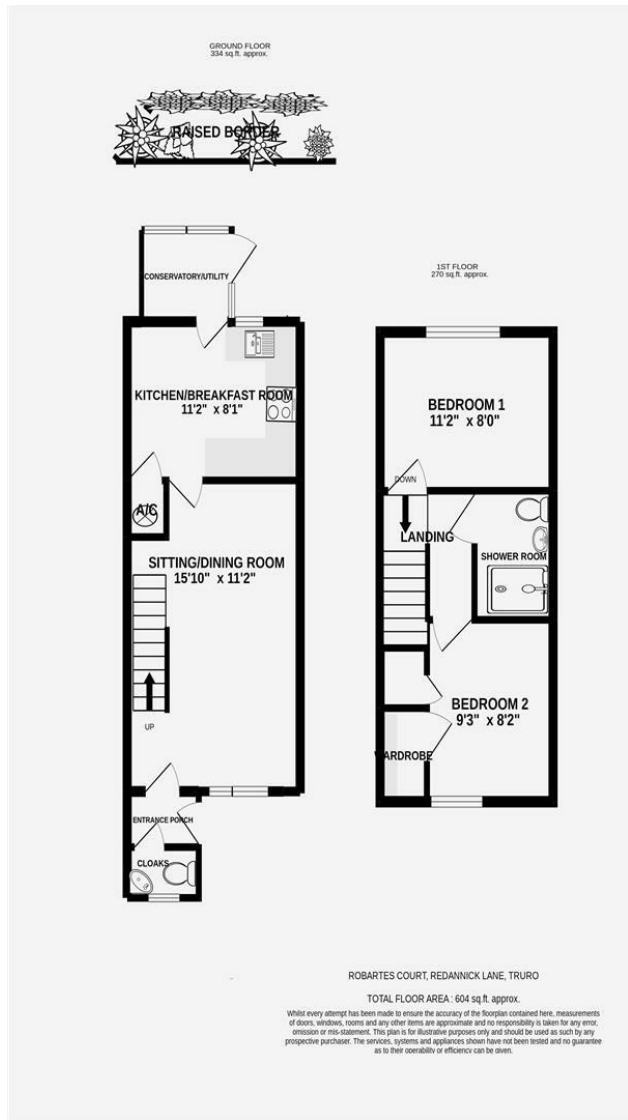
A very well designed two bedroom terraced house tucked away in Robartes Court, Truro which is a purpose built complex for the over 55s. The property has a garage and communal residents' parking and garden along with residents' lounge, guest suite, laundry room and house manager. Electric heating and double glazing.

# Redannick Lane

£130,000 Freehold



- Two bedroom house
- Double glazing
- Conservatory
- Property manager
- Guest suite
- Over 55s complex
- Electric heating
- Garage & communal parking
- Residents' lounge
- Residents' laundry



## Council Tax Band C

## Local Authority Cornwall Council

Agents Note: Whilst every care has been taken to prepare these particulars, they are for guidance purposes only. All measurements are approximate and are for general guidance purposes only and whilst every care has been taken to ensure their accuracy, they should not be relied upon and potential buyers/tenants are advised to recheck the measurements.

Energy Efficiency Rating		Current	Potential
Very energy efficient - lower running costs			
(92 plus) <b>A</b>			
(81-91) <b>B</b>			
(69-80) <b>C</b>			
(55-68) <b>D</b>			
(39-54) <b>E</b>			
(21-38) <b>F</b>			
(1-20) <b>G</b>			
Not energy efficient - higher running costs			
<b>England &amp; Wales</b>		EU Directive 2002/91/EC	

31 Lemon Street  
Truro  
Cornwall  
TR1 2LS



**CLIVEPEARCE**  
Now you're moving

hello@clivepearceproperty.com

01872 272622

www.clivepearceproperty.com