



Leppoc Road, SW4

£6,500 Per calendar month

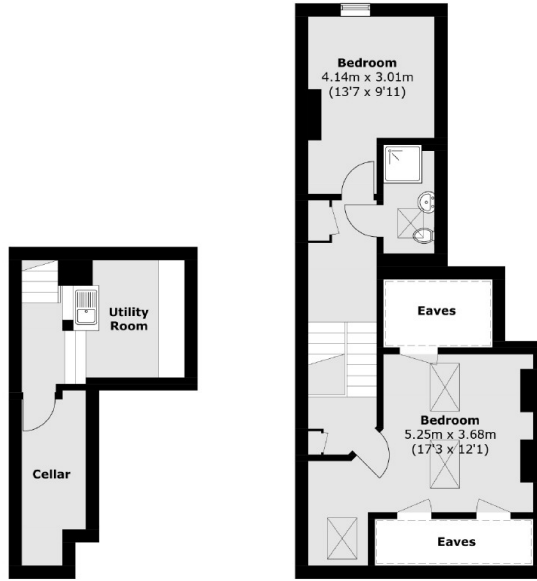
A large five bedroom, two bathroom house situated in the highly desirable Abbeville Village. The property includes a double reception, modern eat-in kitchen, utility room and private garden.

Leppoc Road is situated within easy reach of Clapham Common tube station and the many local amenities on Abbeville Road and Clapham High Street. Clapham Common itself is just moments away.

Features

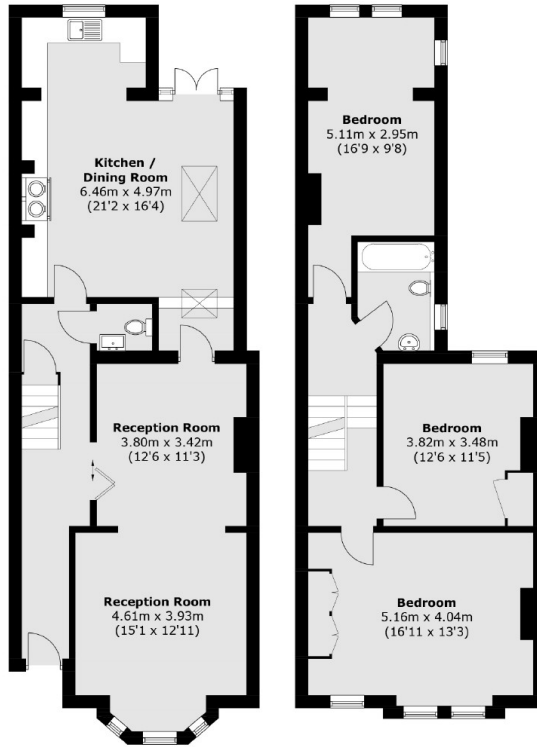
- Five Double Bedrooms
- Two Bathrooms
- Double Reception Room
- Eat-In Kitchen
- Private Garden
- Fantastic Location

Leppoc Road, London, SW4



Basement Level

Second Floor



Ground Floor

First Floor

Total area (approx.): 201.0 sq. m (2,164.4 sq. ft)
(Including Basement Level / Excluding eaves)