

**LONDON  
VICTORIA  
GROUPS** 



## Unison House, 90 Beresford Avenue

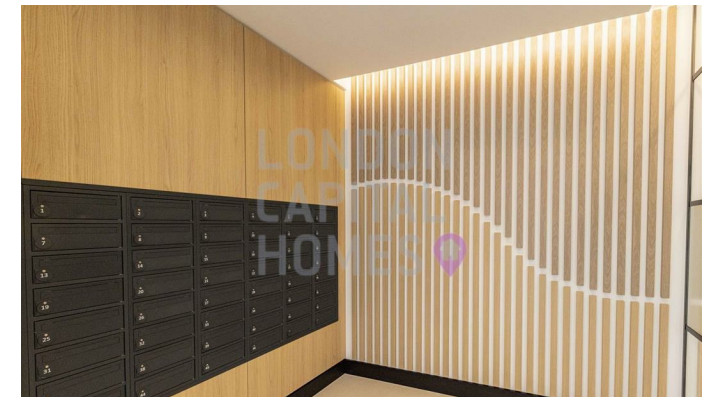
, London HA0 1PR

- Two-bedroom apartment
- Landscaped gardens and waterside walkways
  - Secure entry system and lift access
- Riverside meadows and canal-side pathways
  - CTB-D
- Bright open-plan living and dining area
- Residents' lounge and community spaces
  - Bicycle storage
  - EPC-B

**£2,400 PCM**



Local Authority **Brent**  
Council Tax Band **D**  
EPC Rating **B**



**London Office Office**

Spaces Victoria, 25 Wilton Road, Pimlico,  
London, SW1V 1LW

**Contact**

020 3084 3094  
XL@londonvictoriagroups.co.uk  
www.londonvictoriagroups.co.uk

Agents Note: Whilst every care has been taken to prepare these particulars, they are for guidance purposes only. All measurements are approximate and for general guidance purposes only and whilst every care has been taken to ensure accuracy, they should not be relied upon and potential buyers/tenants are advised to recheck the measurements.