

Sinclair  Hammelton

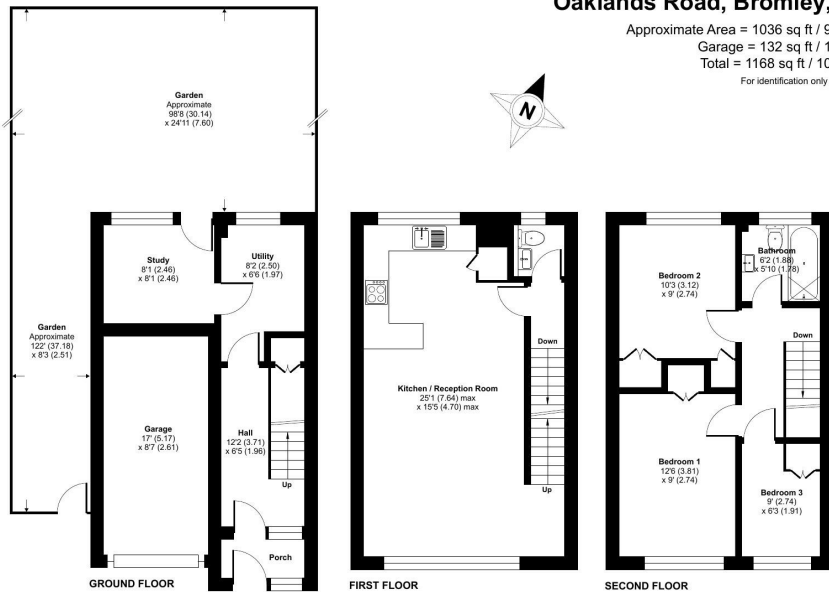
GUIDE PRICE

£625,000

Oaklands Road

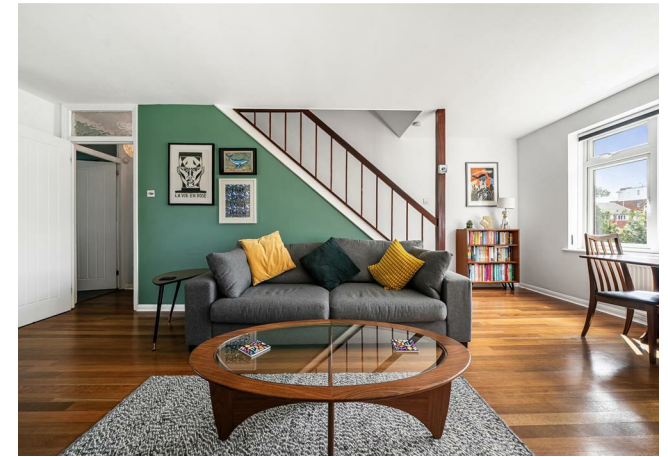
Bromley, BR1 3SN

EPC RATING: C COUNCIL TAX BAND: E



Oaklands Road, Bromley, BR1

Approximate Area = 1036 sq ft / 96.2 sq m
 Garage = 132 sq ft / 12.2 sq m
 Total = 1168 sq ft / 108.5 sq m
 For identification only - Not to scale



Energy Efficiency Rating		Current	Potential
Very energy efficient - lower running costs			
(92 plus)	A		
(81-91)	B		
(69-80)	C		
(55-68)	D		
(39-54)	E		
(21-38)	F		
(1-20)	G		
Not energy efficient - higher running costs			
England & Wales		69	84
		EU Directive 2002/91/EC	

Agents Note: Whilst every care has been taken to prepare these particulars, they are for guidance purposes only. All measurements are approximate and are for general guidance purposes only and whilst every care has been taken to ensure their accuracy, they should not be relied upon and potential buyers/tenants are advised to recheck the measurements

Floor plan produced in accordance with RICS Property Measurement 2nd Edition, Incorporating International Property Measurement Standards (IPMS2 Residential). © nichecom 2026. Produced for Withers & Curtis. REF: 1473414

Sinclair Hammelton

Sinclair Hammelton

OFFICE ADDRESS

23 High Street
 Bromley
 Kent
 BR1 1LG

OFFICE DETAILS

0208 464 5566
 info@sinclairhammelton.co.uk
<https://www.sinclairhammelton.co.uk>
 for-sale-in-bromley/