



Guide Price
£115,000

Leasehold

1x  1x  1x 

**Chichester Road,
Portsmouth, Hampshire,
PO2**

OVER 60?

Secure this property
for up to **59% less!**

cubitt & west
Helping you move forwards



Main features

- Ground floor flat
- Private rear garden
- Cash buyers only
- Self maintaining
- Immaculately presented and fully refurbished throughout

Accommodation

GROUND FLOOR

Entrance Hallway

Lounge: 14'1 x 9'2 maximum
(4.30m x 2.80m)

Bedroom : 11'4 x 9'3 maximum
(3.46m x 2.82m)

Kitchen: 11'1 x 8'8 (3.38m x 2.64m)

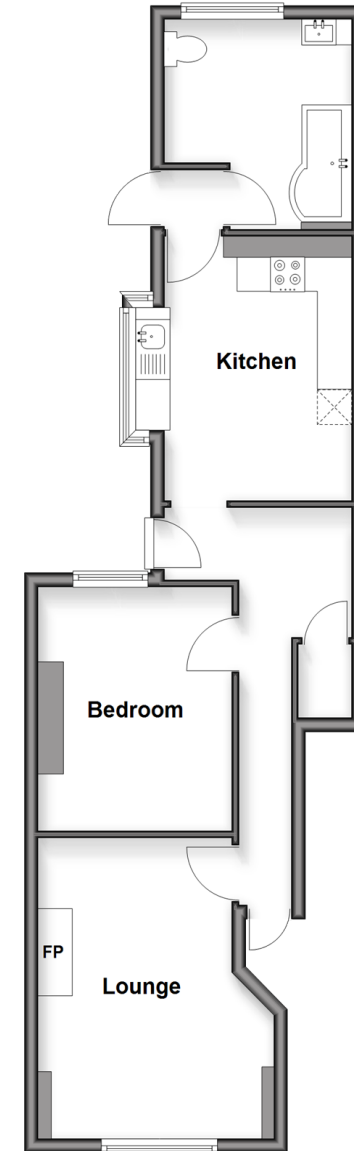
Bathroom: 9'4 x 8'5 (2.85m x 2.57m)

OUTSIDE

Rear Garden

Ground Floor

Approx. 52.3 sq. metres (562.5 sq. feet)



Call Portsmouth - 023 9266 1213 ■ cubittandwest.co.uk

- A private rental licensing scheme applies to some properties in this area, please check with the Local Authority before proceeding
- Legal advice should be taken to verify fixtures/fittings, planning, alterations and/or lease details
- Appliances & services are untested, dimensions are approximate and floor plans are not to scale
- Through a Homewise Home For Life Plan people aged 60+ can secure this property for up to 59% less, by purchasing a Lifetime Lease



41635019/20251210/MO1/EJ