



Portsea Hall

Portsea Place, W2

Asking Price £500,000

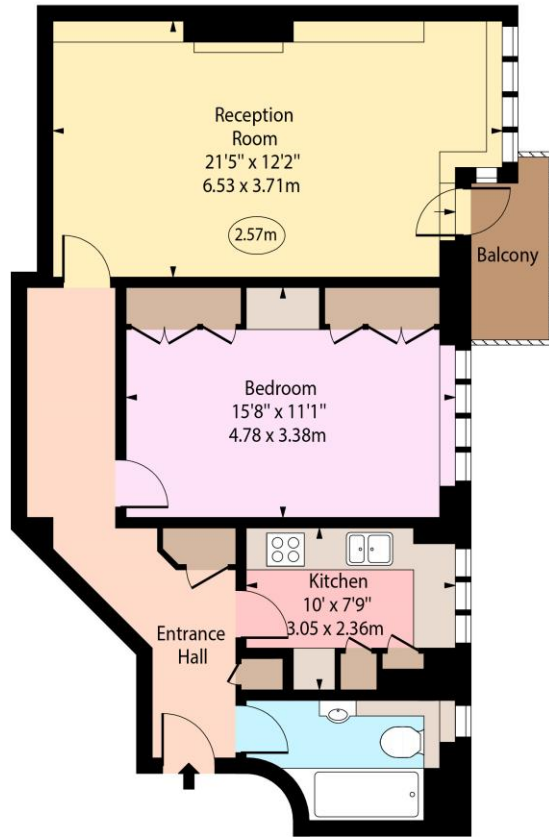
This 2nd-floor, 678 sqft one-bedroom apartment in Portsea Hall offers a bright and airy living space with a south-south-west aspect and a private balcony, perfect for enjoying the views. The property is located in a highly desirable Art Deco building, complete with a lift and porter service, providing both convenience and security. Situated just moments from Oxford Street and excellent transport links, it offers a prime central location with easy access to all that London has to offer.

CHESTERTONS

Portsea Hall,
Portsea Place, W2



○ - Ceiling Height



Second Floor

Approx Gross Internal Area 678 Sq Ft - 62.99 Sq M

Every attempt has been made to ensure the accuracy of the floor plan shown. However, all measurements, fixtures, fittings, and data shown are approximate interpretations and for illustrative purposes only. Measured according to the RICS. Not To Scale.

www.goldlens.co.uk
Ref. No. 030110E

Tenure: Leasehold 96 years (19/03/2122)

Service Charge: £4900 per annum

Ground Rent: £200 per annum

Local Authority: City of Westminster

Council Tax Band: E

Score	Energy rating	Current	Potential
92+	A		
81-91	B		
69-80	C	79 C	79 C
55-68	D		
39-54	E		
21-38	F		
1-20	G		

Chestertons Hyde Park & Marylebone Sales

40 Connaught Street
London
W2 2AB
hydepark@chestertons.co.uk
020 7298 5900
chestertons.co.uk

Chesterton UK Services Limited trading as Chestertons for themselves and for the vendor of this property whose agents they are, give notice that (i) these particulars do not constitute any part of an offer or contract, (ii) all statements contained within these particulars are made without responsibility on the part of Chestertons or the vendor, (iii) whilst made in good faith, none of the statements contained within these particulars are to be relied upon as a statement or representation of fact, (iv) any intending purchasers must satisfy themselves by inspection or otherwise as to the correctness of each of the statements contained within these particulars, (v) the vendor does not make or give either Chestertons or any person in their employment any authority to make or give representation or warranty whatsoever in relation to this property. Wide angle lenses may be used. ©Copyright Chestertons | Chesterton UK Services Limited | Registered Office 40 Connaught Street, Hyde Park, London W2 2AB Registered Company Number 05334580.



This paper is
100% recyclable