



Wilton Way, E8

£475,000

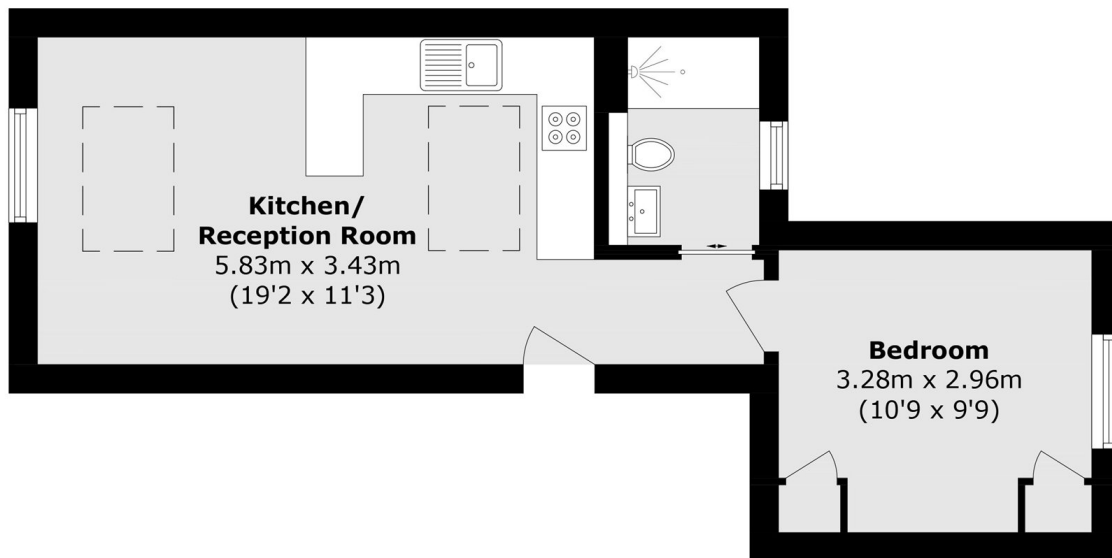
Situated in the heart of Hackney, close to an array of independent bars, coffee shops, and restaurants, this one-bedroom period conversion offers stylish and characterful living. The reception room is open-plan to a contemporary kitchen and features vaulted ceilings, two Velux windows, and a sash window, allowing natural light into the space. The bedroom benefits from a fitted wardrobe and garden views, plus a shower room containing a power shower.

Wilton Way enjoys a central location close to Hackney Central Station, offering connections to both the City and the West End.

Features

- Share of freehold
- Close to London Fields
- Local Amenities
- Excellent Transport Links
- Period Conversion
- Stylish Apartment

Wilton Way, LONDON, E8



Second Floor

Total area (approx): 35.8 sq. m (385.3 sq. ft)