



## 32 Champion Road, Kingswood, Bristol, BS15 4SU

£330,000

Offered with no onward chain and conveniently situated to the ring road for good access for commuting is this delightful semi detached home which has been much loved and cared for. In brief the accommodation comprises storm porch, hallway, lounge diner and kitchen. Upstairs are three generous bedrooms and shower room. Outside to the front are gardens, parking and an attached garage with electric up and over door. To the rear is a mature private lawned and shrubbed garden. This property would be ideal for someone wishing to stamp their mark on their new home. Council Tax Band C, Energy Rating D.

- No Onward Chain
- Semi Detached Home
- Three Bedrooms
- Lounge Diner
- Fitted Kitchen
- Gas Central Heating
- Double Glazing
- Garage & OSP
- Mature Garden

### Viewing

Please contact our Brunt & Fussell Ltd Office on 01179566004 if you wish to arrange a viewing appointment for this property or require further information.



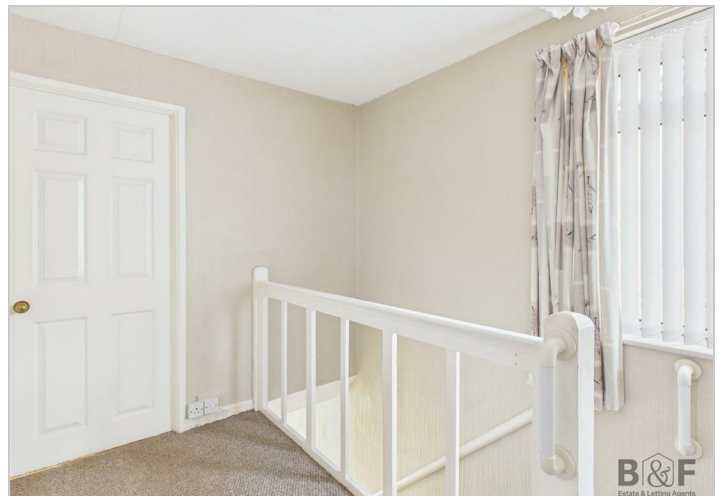
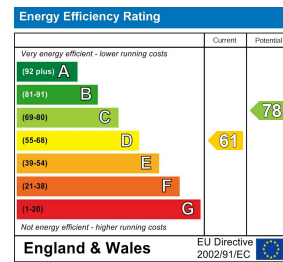
# Floor Plan



# Area Map



# Energy Efficiency Graph



These particulars, whilst believed to be accurate are set out as a general outline only for guidance and do not constitute any part of an offer or contract. Intending purchasers should not rely on them as statements of representation of fact, but must satisfy themselves by inspection or otherwise as to their accuracy. No person in this firm's employment has the authority to make or give any representation or warranty in respect of the property.