






STONE CREST

Limpley Stoke, Bath



A THOUGHTFULLY DESIGNED, FUTURE-READY HOME IN A SPECTACULAR SETTING, JUST MINUTES FROM BATH.

Stone Crest is an exceptional new home in a private,
gated setting on the southern edge of Bath.

			EPC
5	3	2	TBC

Local Authority: Wiltshire Council
Council Tax band: TBC
Tenure: Freehold

Viewings: Strictly by prior appointment with the agent Knight Frank LLP.

THE PROPERTY

Stone Crest is an exceptional new home in a private, gated setting on the southern edge of Bath. One of just two individually designed houses, it offers generous living space, superb energy efficiency, and stunning views across the Winsley and Freshford valley.

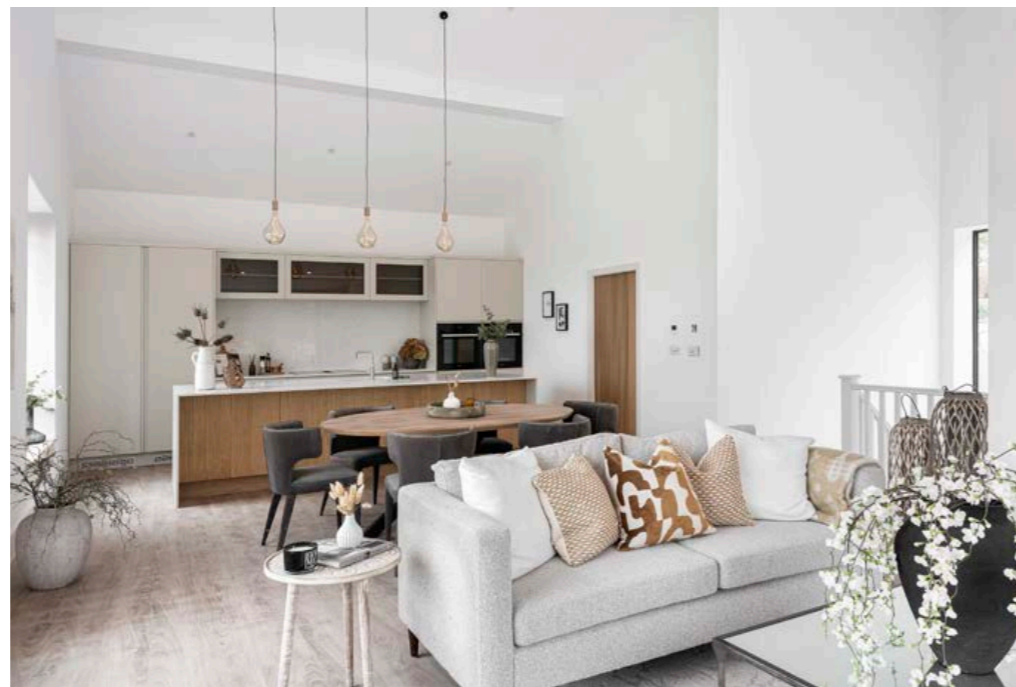
The house includes five double bedrooms, three bathrooms (plus a cloakroom), and a striking open-plan kitchen/dining/living room with direct access to a large roof terrace. There's also a separate utility room and a fully fitted home office in the garden.

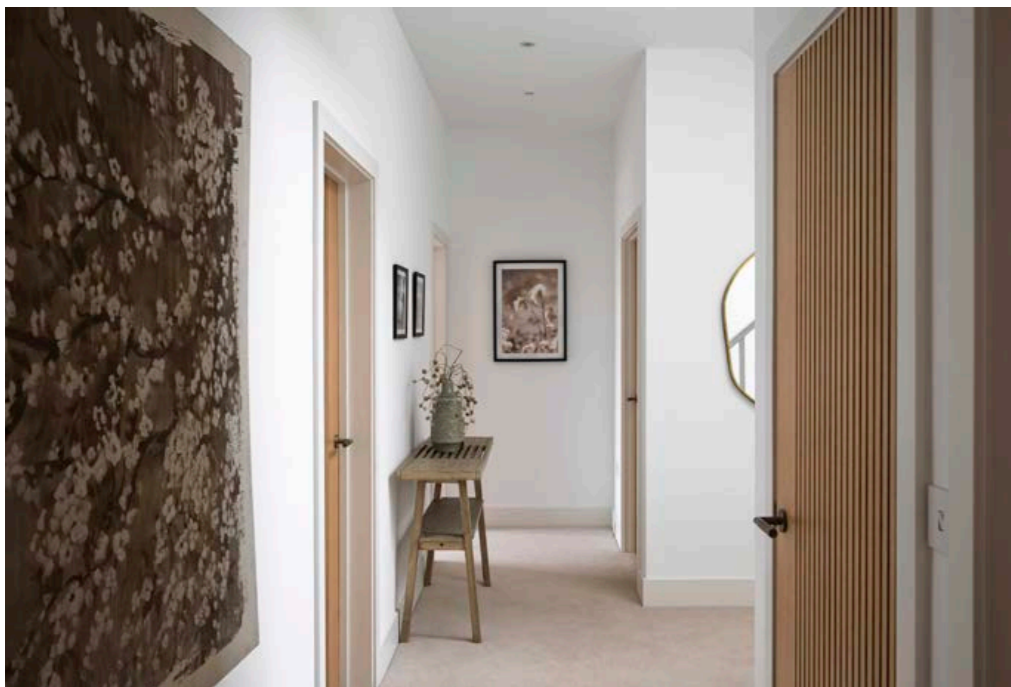
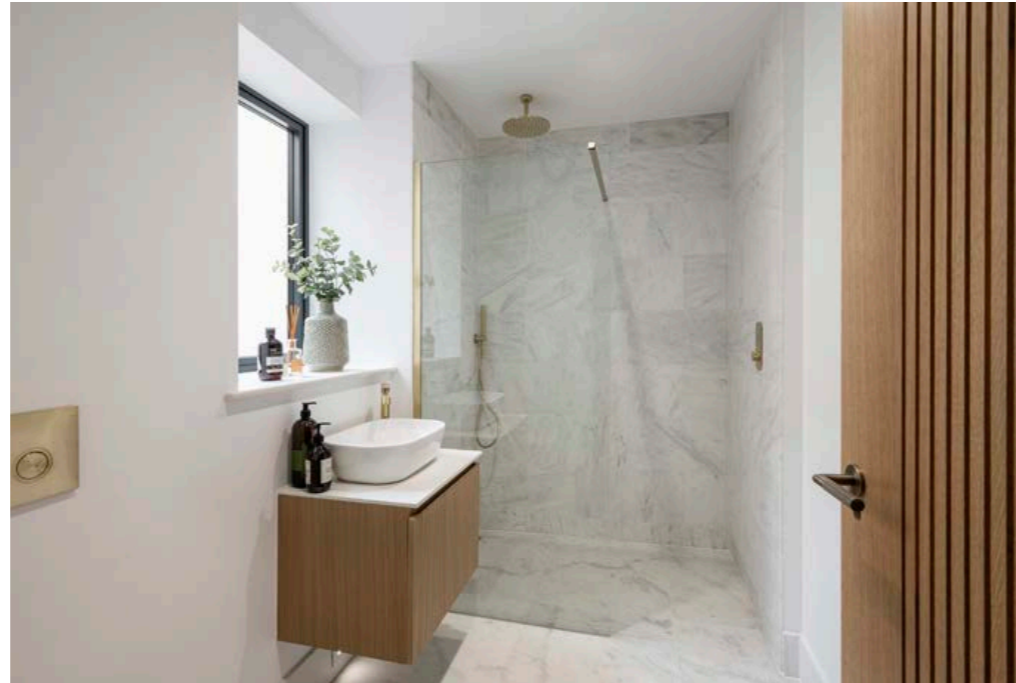
Interior finishes are of the highest quality, including a handmade Shaker & May kitchen, Miele appliances, quartz worktops, Mandarin Stone tiling, and British-made sanitaryware. The master en-suite features marble tiles and brushed brass finishes, while the remaining bathrooms are finished in brushed steel.

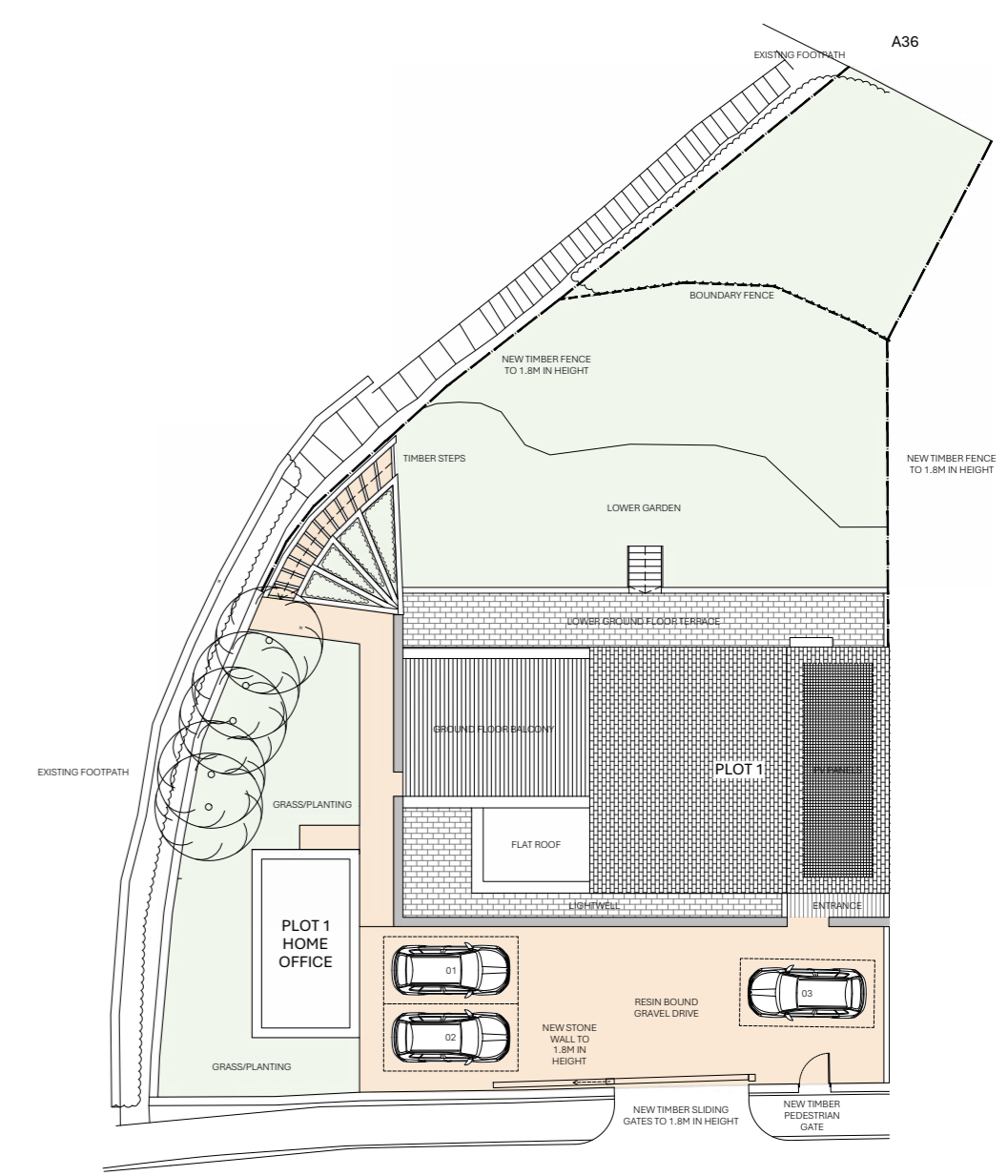
Designed with sustainability in mind, Stone Crest includes underfloor heating, an air source heat pump, solar PV panels with battery storage, EV charging point, and a pressurised hot water system.

Outside, the landscaped garden includes patios, soft planting, lawn area, and wildflower verges. Parking is provided for three cars on a Cotswold gravel driveway.









Approximate Gross Internal Area = 2775 sq ft

This plan is for layout guidance only. Not drawn to scale unless stated. Windows and door openings are approximate. Whilst every care is taken in the preparation of this plan, please check all dimensions, shapes and compass bearings before making any decisions reliant upon them.

We would be delighted
to tell you more.

Sam Daniels
01225 325 992
sam.daniels@knightfrank.com

Knight Frank Bath
4 Wood Street,
Bath, BA1 2JQ

[knightfrank.co.uk](https://www.knightfrank.co.uk)

Your partners in property

1. Particulars: These particulars are not an offer or contract, nor part of one. You should not rely on statements given by Knight Frank in the particulars, by word of mouth or in writing ("information") as being factually accurate about the property, its condition or its value. Neither Knight Frank nor any joint agent has any authority to make any representations about the property, and accordingly any information given is entirely without responsibility on the part of Knight Frank. 2. Material Information: Please note that the material information is provided to Knight Frank by third parties and is provided here as a guide only. While Knight Frank has taken steps to verify this information, we advise you to confirm the details of any such material information prior to any offer being submitted. If we are informed of changes to this information by the seller or another third party, we will use reasonable endeavours to update this as soon as practical. 3. Photos, Videos etc: The photographs, property videos and virtual viewings etc. show only certain parts of the property as they appeared at the time they were taken. Areas, measurements and distances given are approximate only. 4. Regulations etc: Any reference to alterations to, or use of, any part of the property does not mean that any necessary planning, building regulations or other consent has been obtained. A buyer must find out by inspection or in other ways that these matters have been properly dealt with and that all information is correct. 5. Fixtures and fittings: A list of the fitted carpets, curtains, light fittings and other items fixed to the property which are included in the sale (or may be available by separate negotiation) will be provided by the Seller's Solicitors. 6. VAT: The VAT position relating to the property may change without notice. 7. To find out how we process Personal Data, please refer to our Group Privacy Statement and other notices at <https://www.knightfrank.com/legals/privacy-statement>.

Particulars dated November 2025. Photographs dated October 2025. All information is correct at the time of going to print. Knight Frank is the trading name of Knight Frank LLP. Knight Frank LLP is a limited liability partnership registered in England and Wales with registered number OC305934. Our registered office is at 55 Baker Street, London W1U 8AN. We use the term 'partner' to refer to a member of Knight Frank LLP, or an employee or consultant. A list of members names of Knight Frank LLP may be inspected at our registered office. If you do not want us to contact you further about our services then please contact us by either calling 020 3544 0692, email to marketing.help@knightfrank.com or post to our UK Residential Marketing Manager at our registered office (above) providing your name and address.