



121 Grimshaw Lane, Ormskirk

Ormskirk

In Excess of £210,000

# 121 Grimshaw Lane

Ormskirk

Extended three-bedroom end-terrace home on Grimshaw Lane, offering spacious and versatile living ideal for family life. The property features a bright bay-fronted lounge, generous dining area opening onto the garden, and a practical kitchen layout. Upstairs includes three well-proportioned bedrooms and a family bathroom. With a good-sized rear garden and off-road parking to the front, this home provides a fantastic opportunity in a convenient and popular location.

Council Tax band: B

Tenure: Freehold

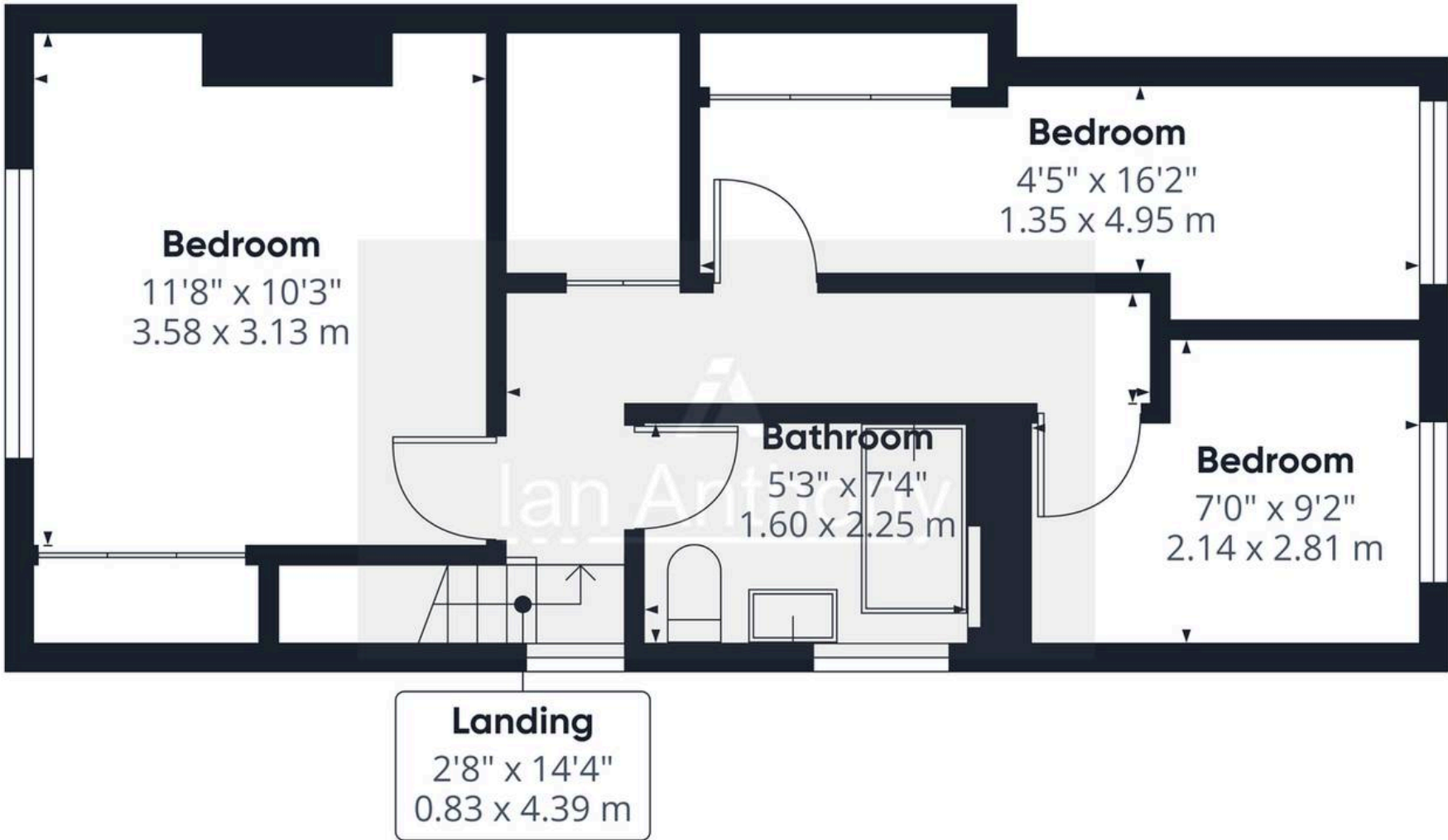
EPC Energy Efficiency Rating: D

EPC Environmental Impact Rating: D

- Extended three-bedroom end-terrace home
- Bright bay-fronted lounge with feature fireplace
- Spacious dining room with patio doors to garden
- Practical kitchen with appliance space
- Three well-proportioned bedrooms
- Ground floor WC via side porch
- Good-sized rear garden with patio area
- Driveway providing off-road parking







Approximate total area<sup>(1)</sup>

385 ft<sup>2</sup>

35.8 m<sup>2</sup>

(1) Excluding balconies and terraces

Calculations reference the RICS IPMS 3C standard. Measurements are approximate and not to scale. This floor plan is intended for illustration only.

GIRAFFE360





## IAN ANTHONY

5 Burscough Street, Ormskirk - L39 2EG

01695580888

[enquiries@iananthonyestates.co.uk](mailto:enquiries@iananthonyestates.co.uk)

[iananthonyestates.co.uk/](http://iananthonyestates.co.uk/)

