

Guide Price £399,950



13 Millway Gardens, Bradninch, Exeter, Devon, EX5 4RE

- Four spacious bedrooms
- Large dual aspect sitting room
- Stunning open views
- Downstairs cloakroom with rear lobby & entrance porch
- Ample driveway parking for several vehicles
- Family bathroom & en-suite
- Dining room with patio doors
- Well appointed fitted kitchen with granite worktops
- Large mature terraced gardens
- Gas central heating & double glazed throughout

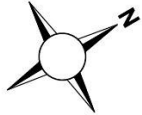
Sales, Lettings, Mortgages:

Bampton 01398 332006 | Cullompton 01884 32100 | Tiverton 01884 253500

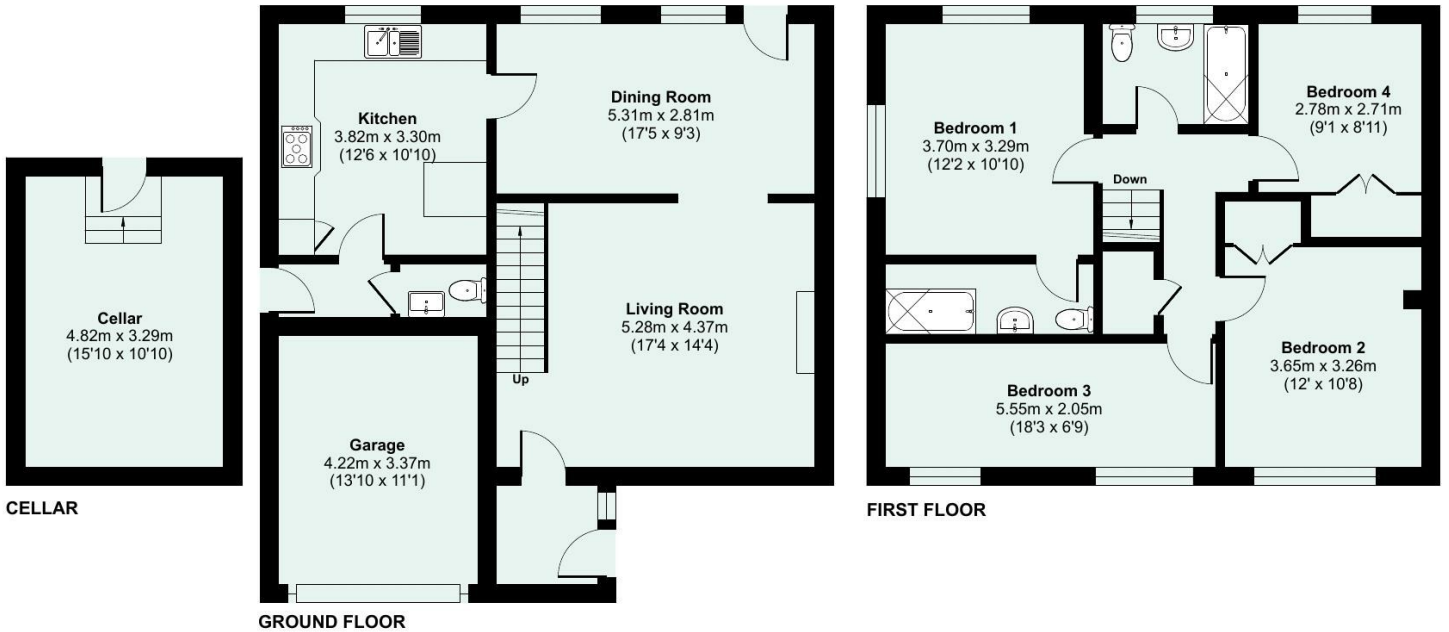


Watch the Seddons' Video Tour

An extended family home in a quiet and tucked away position, within easy walking distance of the village amenities, offering spacious accommodation with open views, a large mature rear garden, garage and driveway parking.



Approximate Area = 1512 sq ft / 140.4 sq m
 Garage = 144 sq ft / 13.3 sq m
 Total = 1656 sq ft / 153.7 sq m
 For identification only - Not to scale



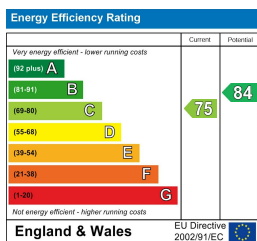
Floor plan produced in accordance with RICS Property Measurement 2nd Edition, Incorporating International Property Measurement Standards (IPMS2 Residential). © ntechcom 2026. Produced for Seddon Estate Agents LLP. REF: 1464609



Council Tax Band

B

EPC Rating



Viewings

Viewings by arrangement only. Call 01884 32100 to make an appointment.

Directions