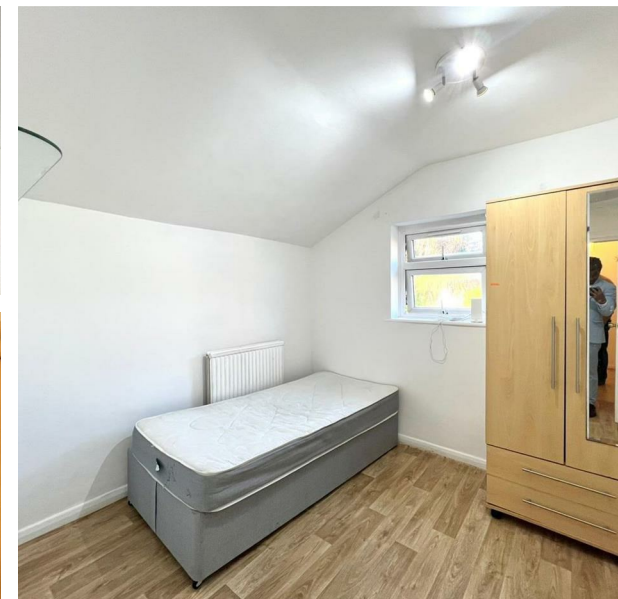


65 Chelmsford Road, Walthamstow, Greater London, E17 8NP  
£3,300 Per Month

**COMPLETION**  
SALES & LETTINGS



65 Chelmsford Road, Walthamstow, Greater London, E17 8NP

£3,300 Per Month

Council Tax Band: C

Nestled in the vibrant area of Walthamstow, E17, this splendid four-bedroom Victorian terraced house is now available to let at a competitive rate of £3,300 per calendar month. This modern property seamlessly blends classic charm with contemporary living, making it an ideal home for families or professionals seeking space and comfort.

Upon entering, you are greeted by two generously sized reception rooms, perfect for entertaining guests or enjoying quiet evenings with family. The layout of the house is thoughtfully designed, providing ample room for relaxation and socialising. The four well-proportioned bedrooms offer a peaceful retreat, ensuring everyone has their own personal space.









337 Forest Road  
 London  
 E17 5JR  
 02085277007  
 enquiries@completion.co.uk  
 completion.co.uk

