

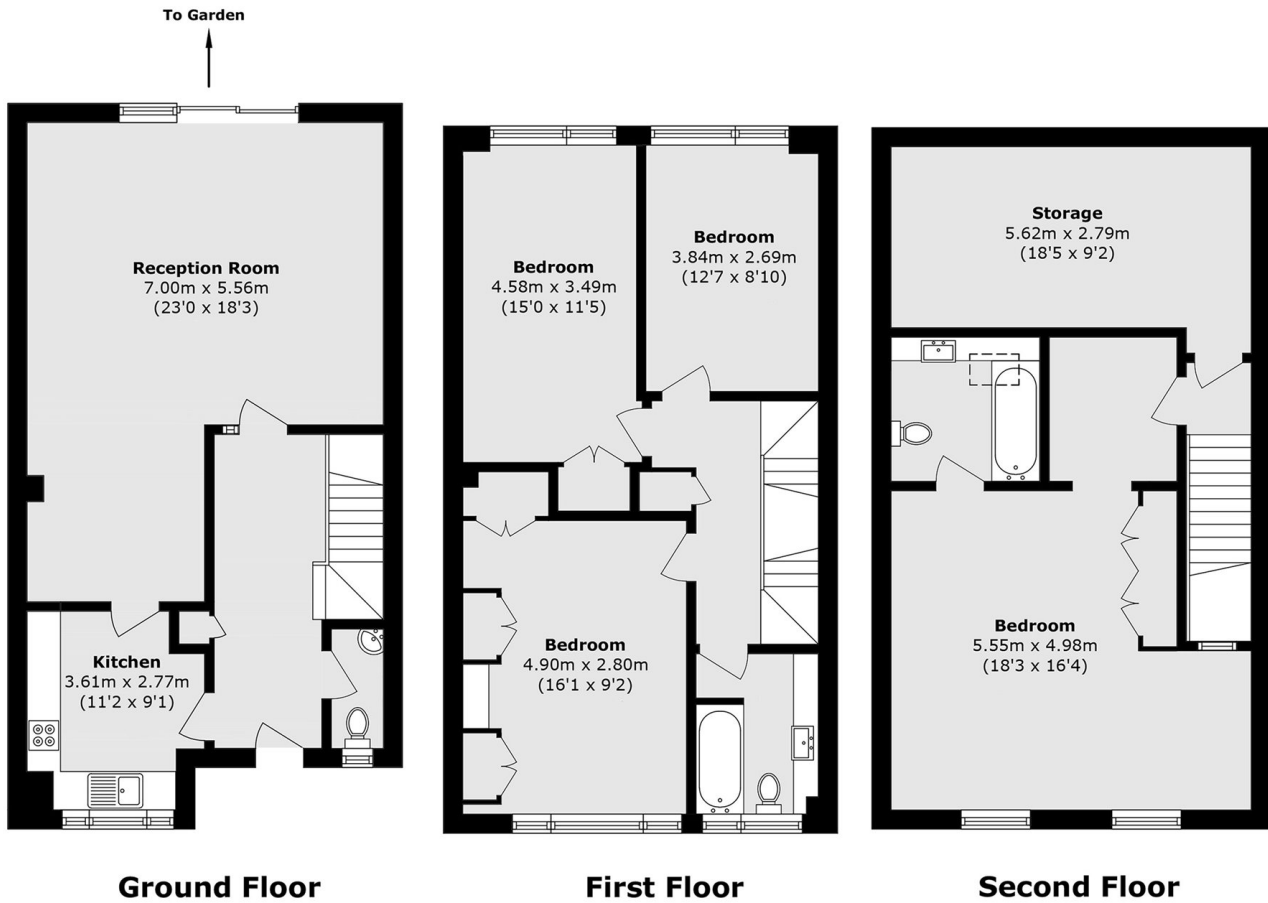


## BEMBRIDGE CLOSE, NW6

£3,500 pcm

This spacious 1643 sq. Ft. Four-bedroom property features ample storage, a bright reception, a large living area, and a private patio garden with BBQ facilities. The modern kitchen includes new appliances, and the home has a ground floor W/C and two bathrooms. Located less than 0.5 miles from Kilburn Underground Station and close to shops, this property is convenient

- Large 4 Bedroom House
- Large Garden Area
- 3 Bathrooms
- Free Secure Parking



Total area (approx.): 172.6 sq. m (1857.8 sq. ft)

**LiFE RESIDENTIAL**

203 Trentham Court, Victoria  
Road, London, W3 6BT  
Sales: 020 3668 1112  
Lettings: 020 3668 1111

Energy Rating: . We aim to make our particulars both accurate and reliable. However they are not guaranteed; nor do they form part of an offer or contract. If you require clarification on any points then please contact us, especially if you're traveling some distance to view. Please note that appliances and heating systems have not been tested and therefore no warranties can be given as to their good working order.