



## Navigators Walk, E3

£650,000

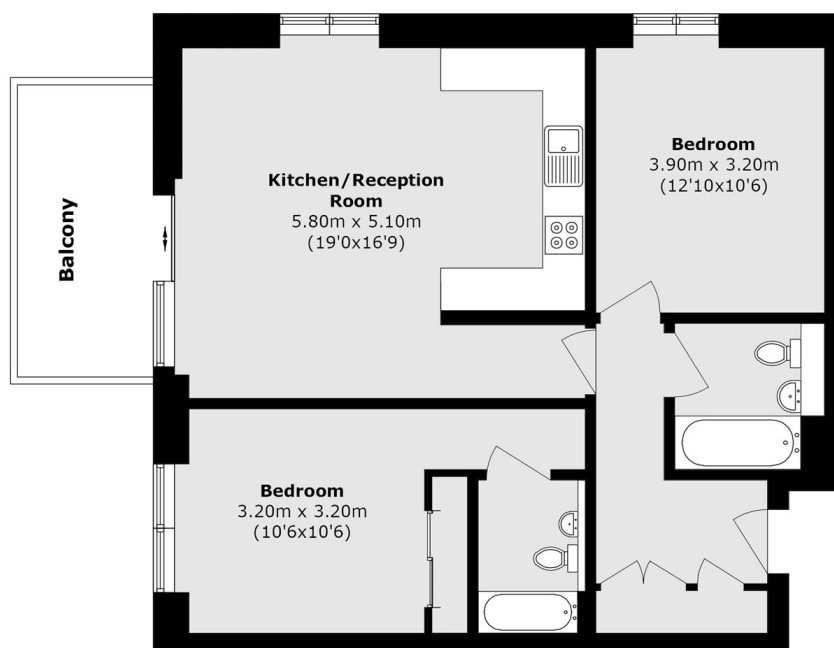
A two bedroom third floor apartment extending north of 800 Sq. Ft, with a private balcony and open plan living space. The property comprises a spacious kitchen/ reception room with access to the balcony, two double bedrooms, two bathrooms and additional storage.

Located within a modern development in East London, the apartment is well positioned for access to local amenities and transport links connecting to Canary Wharf, Stratford and the City.

### Features

- Two Double Bedrooms
- Two Bathrooms
- Open Plan
- Floor to Ceiling Windows
- Private Parking Spot
- Private Balcony

# Navigators Walk, London, E3



Total area (approx.): 74.6 sq. m (802.9 sq. ft)

Balcony area (approx.): 7.79 sq. m (83.9 sq. ft)