



56 Heber Street, Bristol  
£350,000





## 56 Heber Street

Bristol, Bristol

Council Tax band: A

Tenure: Freehold

EPC Energy Efficiency Rating: E

EPC Environmental Impact Rating:

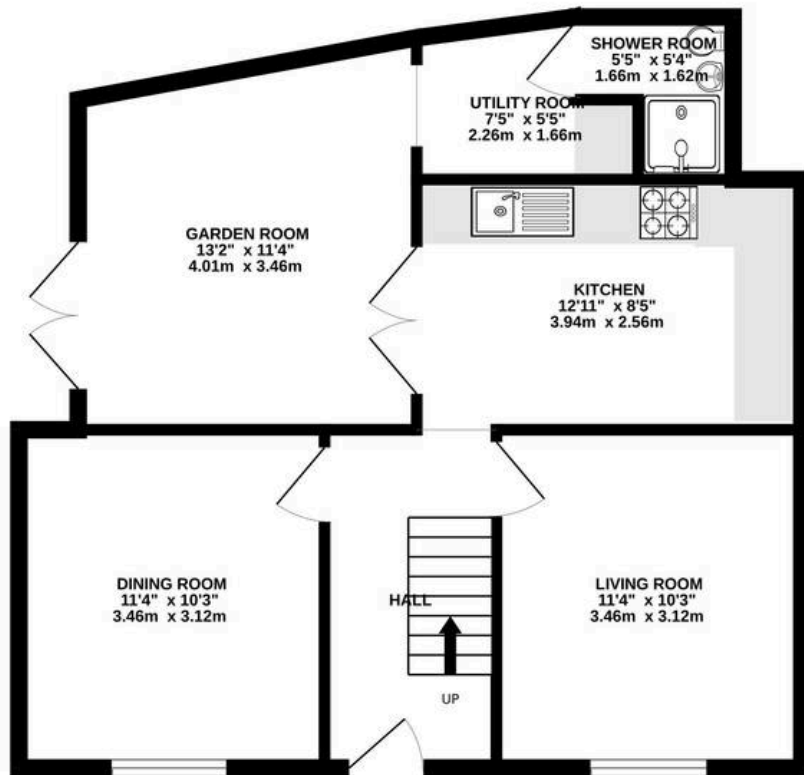
- End-of-terrace position
- Three bedroom home
- Kitchen opening onto garden room extension
- Private garden
- Bathroom and shower room
- Off-street parking for small vehicle
- Direct garden access via French doors
- Built-in shelving for ample storage



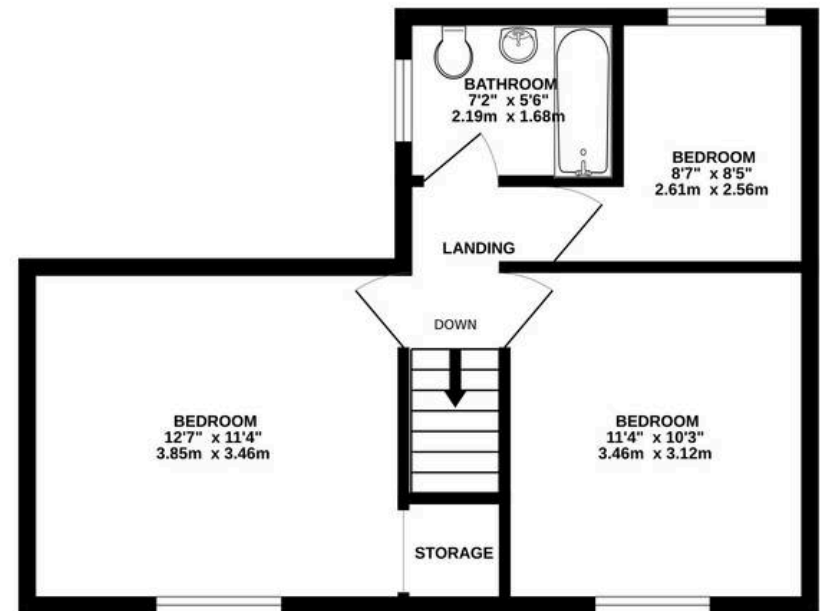




GROUND FLOOR  
600 sq.ft. (55.7 sq.m.) approx.



1ST FLOOR  
412 sq.ft. (38.3 sq.m.) approx.



TOTAL FLOOR AREA : 1012 sq.ft. (94.0 sq.m.) approx.

Whilst every attempt has been made to ensure the accuracy of the floorplan contained here, measurements of doors, windows, rooms and any other items are approximate and no responsibility is taken for any error, omission or mis-statement. This plan is for illustrative purposes only and should be used as such by any prospective purchaser. The services, systems and appliances shown have not been tested and no guarantee as to their operability or efficiency can be given.  
Made with Metropix ©2025

