



# RE/MAX

## PROPERTY HUB



**6 Windsor Avenue, Newton Abbot, TQ12 4DL**

**Guide price £250,000**

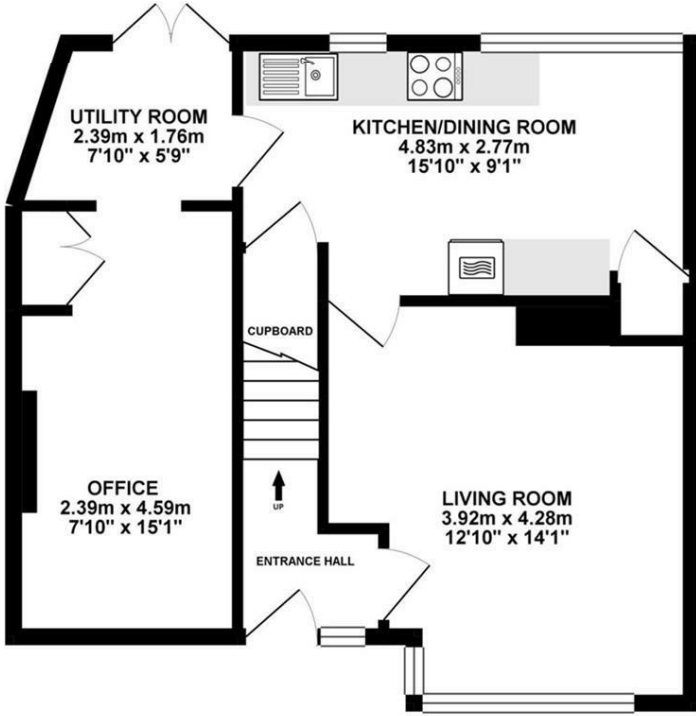
RE/MAX are delighted to present this lovely 3 bedroom semi-detached house. The property briefly comprises 3 double bedrooms, open plan kitchen/diner, large living room and a modern family bathroom. The property has off road parking and a private and enclosed rear garden.

Situated in a location with excellent public transport links, nearby schools, and local amenities, this property ensures convenience in everyday living. An opportunity not to be missed, this house invites you to realise its potential and transform it into a dream home.

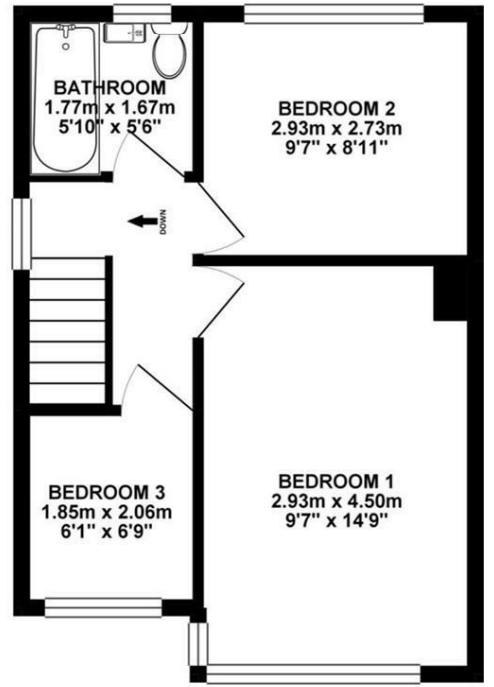


# Floor Plan

GROUND FLOOR 47.38 sq. m.  
( 509.94 sq. ft. )



1ST FLOOR 32.74 sq. m.  
( 352.38 sq. ft. )

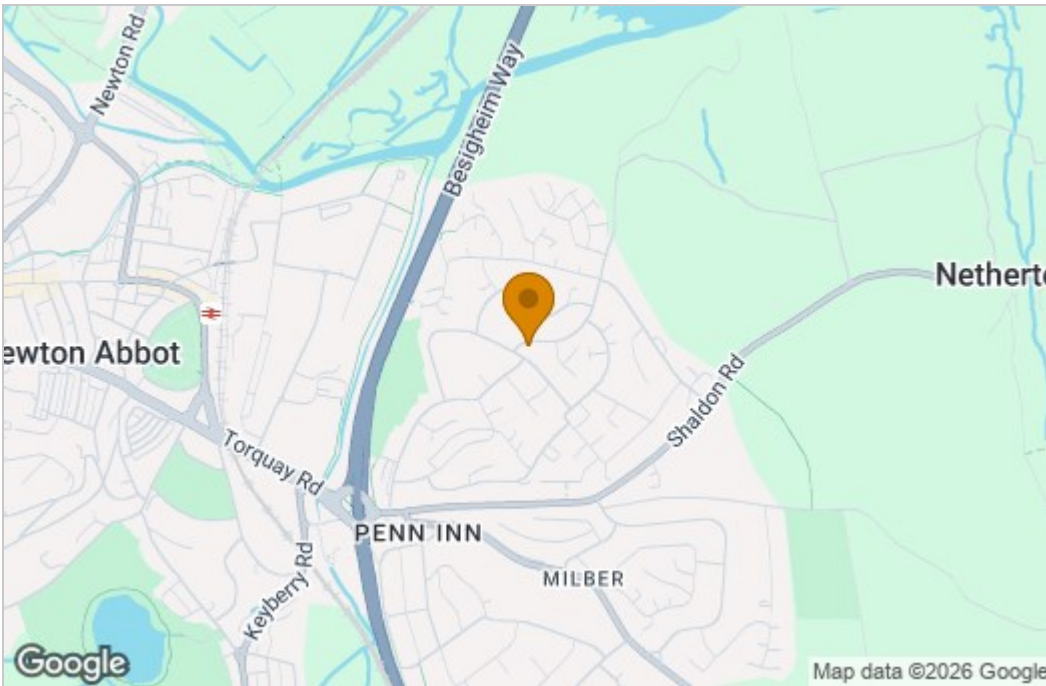


TOTAL FLOOR AREA : 80.11 sq. m. ( 862.33 sq. ft. ) approx.

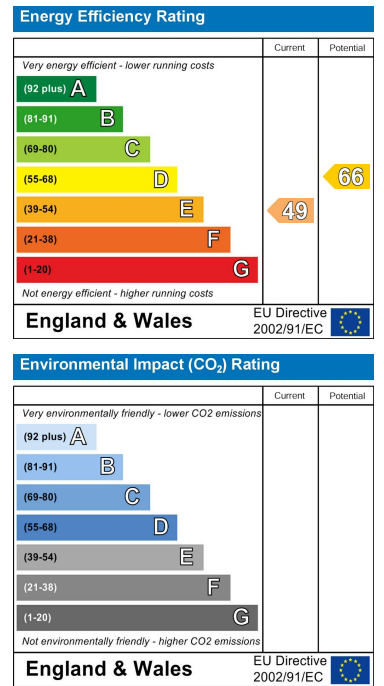
Whilst every attempt has been made to ensure the accuracy of the floorplan contained here, measurements of doors, windows, rooms and any other items are approximate and no responsibility is taken for any error, omission or mis-statement. This plan is for illustrative purposes only and should be used as such by any prospective purchaser. The services, systems and appliances shown have not been tested and no guarantee as to their operability or efficiency can be given.  
Made with Metropix ©2019



# Area Map



# Energy Efficiency Graph



These particulars, whilst believed to be accurate are set out as a general outline only for guidance and do not constitute any part of an offer or contract. Intending purchasers should not rely on them as statements of representation of fact, but must satisfy themselves by inspection or otherwise as to their accuracy. No person in this firm's employment has the authority to make or give any representation or warranty in respect of the property.