



**180 Heathfield Avenue, Dover - CT16 2PA**  
£950 pcm



## 180 Heathfield Avenue

Dover

Charming two bedroom mid-terrace with spacious living area, modern kitchen, flexible bedrooms, and enclosed rear garden. Ideal for individuals, couples, or small families.

Council Tax band: B

Tenure: Freehold

EPC Energy Efficiency Rating: D

EPC Environmental Impact Rating: D

- Two bedroom mid terrace house
- Fitted bathroom and kitchen
- Enclosed rear garden
- Gas central heating
- Double glazing
- Holding deposit £219.00
- Deposit £1096.00

**Living/dining room**

20' 8" x 11' 11" (6.30m x 3.63m)

-

**Kitchen**

8' 10" x 6' 0" (2.69m x 1.83m)

-

**Bedroom one**

11' 5" x 9' 0" (3.48m x 2.74m)

-

**Bedroom two**

9' 0" x 8' 9" (2.74m x 2.67m)

-

**Bathroom**

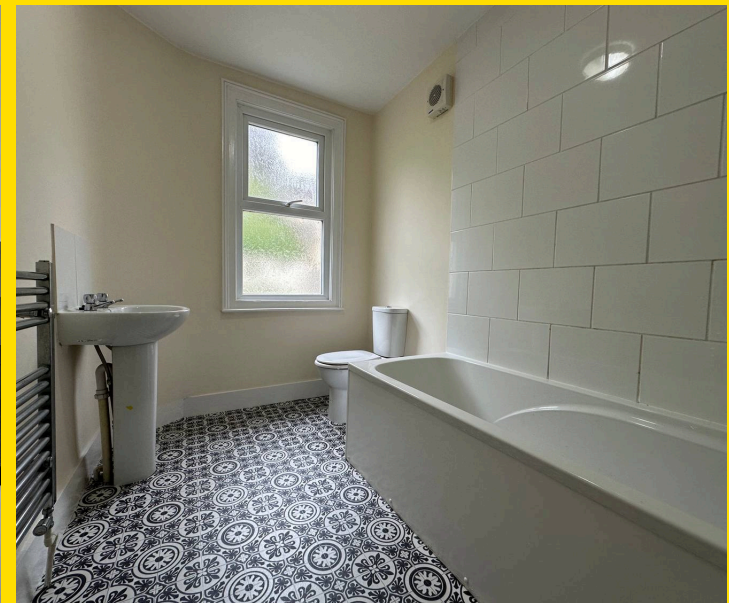
-

**Outside**

Enclosed rear garden

**Holding deposit**

If you wish to apply for this property then you will be required to pay a Holding Deposit which is equal to 1 weeks rent to reserve the property while your referencing takes place. Please ask our staff for further details of other fees which may become payable during the lifetime of your tenancy.





## Laing Bennett

Laing Bennett Ltd, The Estate Office, 8 Station Road - CT18 8HP

01303 863393

[info@laingbennett.co.uk](mailto:info@laingbennett.co.uk)

[www.laingbennett.co.uk/](http://www.laingbennett.co.uk/)

DISCLAIMER - These details are for guidance only and do not form part of an offer or contract. Measurements are approximate. Laing Bennett Ltd and the Vendor/Landlord accept no liability. Services and appliances are untested. Applicants must make their own checks. Items shown may not be included. No staff have authority to give warranties.