



City Road, EC1V

£395,000

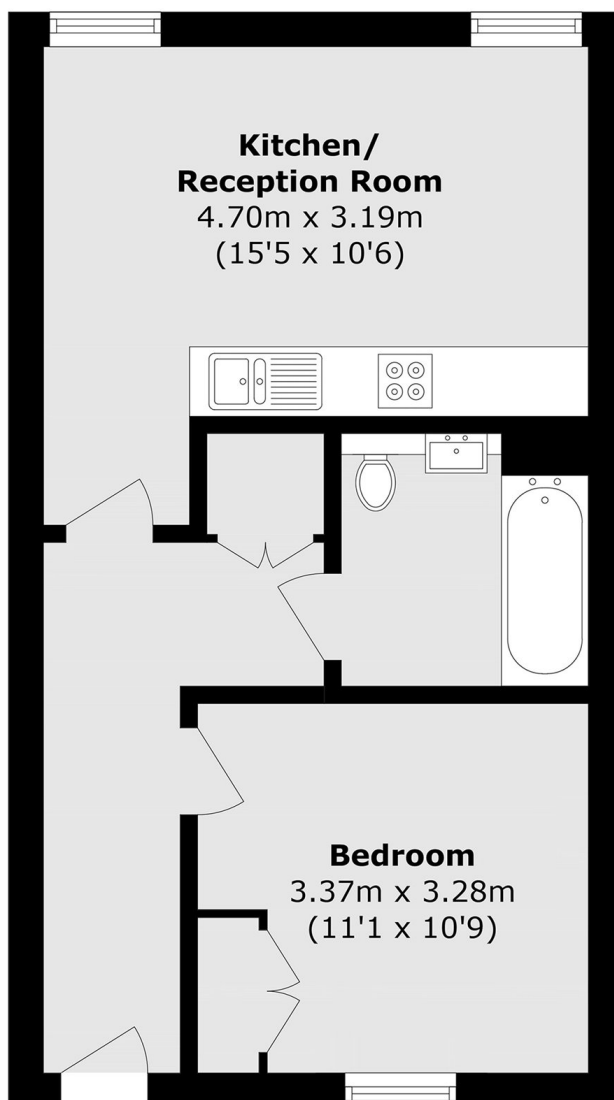
A superbly located one bedroom apartment next to City Road Basin. This property is bright throughout, with a large double bedroom, modern bathroom, and an open plan kitchen reception.

Fable Apartments boasts a prime location, nestled equidistance between Upper Street and Old Street. Enjoy the best of both worlds with easy access to the boutique shops and high street chains at Angel, as well as the vibrant bars and restaurants of Shoreditch and Hoxton.

Features

- Open Plan
- One Bedroom
- Modern Bathroom
- Central Location

City Road, London, EC1V



Total area (approx.): 41.6 sq. m (447.8 sq. ft)