



Coleridge Gardens, SW10

£980 Per week

A beautiful two double bedroom first floor apartment with views over the immaculate communal gardens. The development provides access to great on site facilities.

Kings Chelsea is a highly sought after 24 hour portered development located in Chelsea. Kings Road is on the doorstep convenient for the many shops, restaurants and transport facilities.

Features

- Two Bedroom
- Two Bathroom
- Open Plan Living Room
- Garden Views
- 24 Hour Porter
- Lift Access



Coleridge Gardens, SW10

The impressive on site facilities including concierge, swimming pool, tennis court, gym, management office and underground car parking space.

With lift access to the first floor of this block, once entering the property one is immediately greeted by the fantastic light coming through the reception room and open plan kitchen with ideal island and separate utility room. Off of the hallway the family bathroom is found which ensures guests are well catered for.

Both bedrooms are found down the hallway, both offering access to the private balcony overlooking the communal gardens and tennis courts. The master bedroom offers built in storage and en-suite.



Coleridge Gardens, London, SW10

Approximate Gross Internal Floor Area
1,145 sq ft / 106.3 sq m

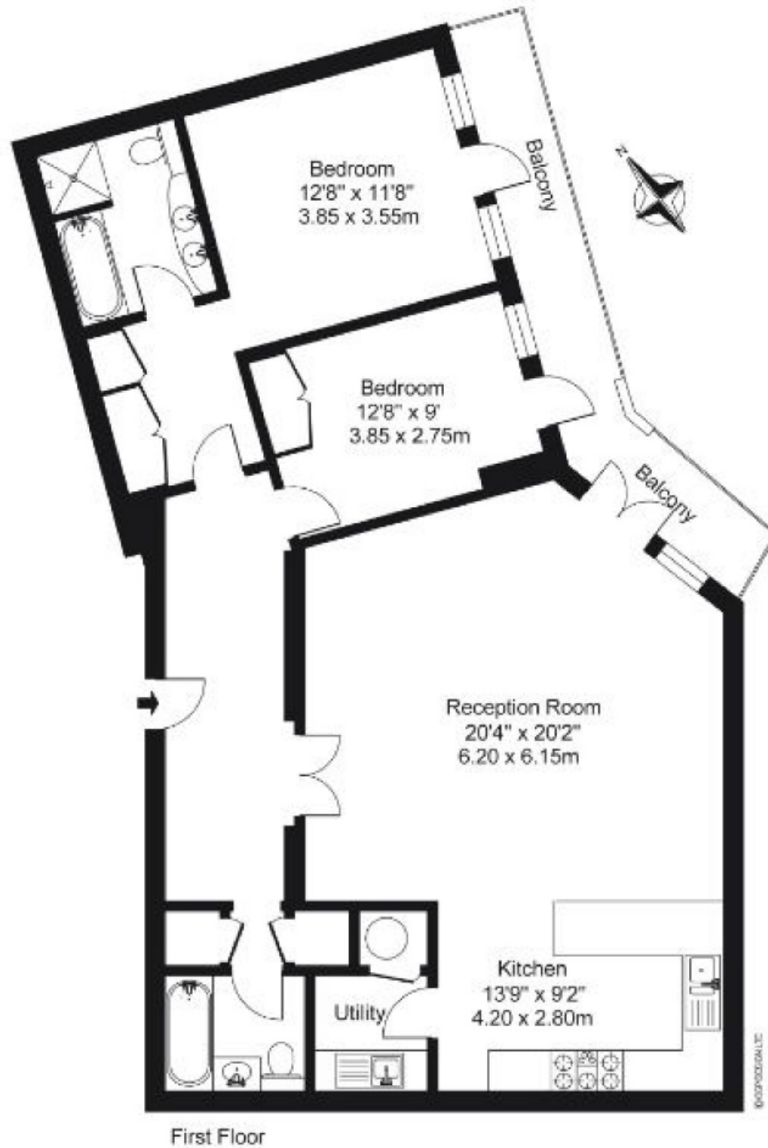


ILLUSTRATION FOR IDENTIFICATION PURPOSES ONLY

ALL MEASUREMENTS ARE MAXIMUM, AND INCLUDE WINDOW BAYS AND WARDROBES WHERE APPLICABLE
THIS PLAN MUST NOT BE REPRODUCED BY ANY OTHER PERSON WITHOUT PERMISSION.

Dexters

Chelsea and Belgravia
45 Sloane Avenue
London
SW3 3DH
Lettings
020 7590 9500

Energy Rating: B. We aim to make our particulars both accurate and reliable. However they are not guaranteed; nor do they form part of an offer or contract. If you require clarification on any points then please contact us, especially if you're traveling some distance to view. Please note that appliances and heating systems have not been tested and therefore no warranties can be given as to their good working order.

 **RICS** | Regulated
Estate Agent
and Letting Agent

[dexters.co.uk](https://www.dexters.co.uk)