



New Union Square, SW8

£2,750 Per calendar month

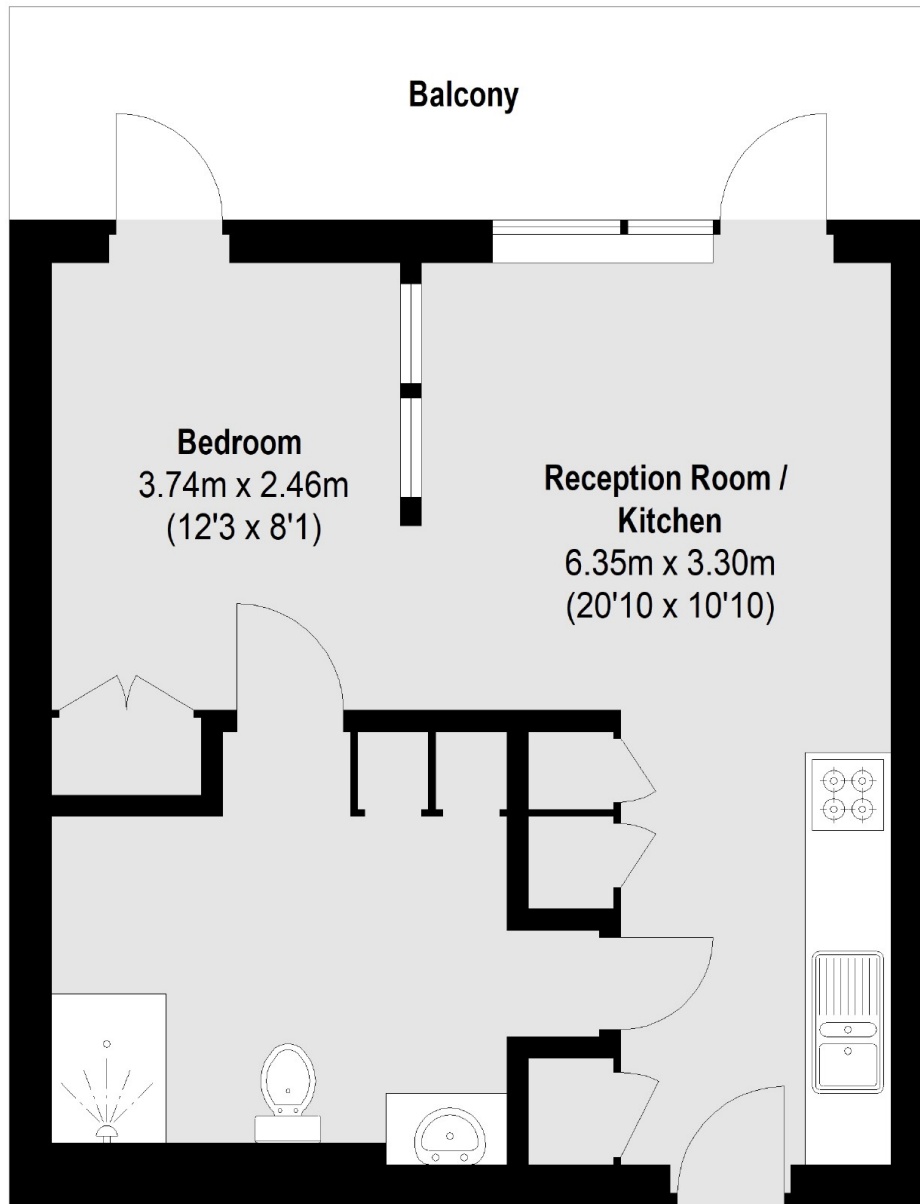
A spacious studio apartment located in the sought after Embassy Gardens development. This luxurious property offers amply storage, a practical layout, large bathroom and private balcony.

Embassy Gardens is a new luxury development, which includes 24 hour concierge, two gyms, indoor swimming pool, cinema, business suites and the world famous sky pool. Nine Elms Underground (Northern Line) is just a short walk away.

Features

- Studio Apartment
- Private Balcony
- Large Bathroom
- Great Storage
- Embassy Gardens
- Resident Facilities

New Union Square, London, SW8



Total area (approx.): 37.97 sq. m (409 Sq. ft)
Balcony: 9.75 sq. m (105 Sq. ft)