

2
BED

A Stunning Seaside Residence

25, Marine Parade, Seaford, BN25 2PL



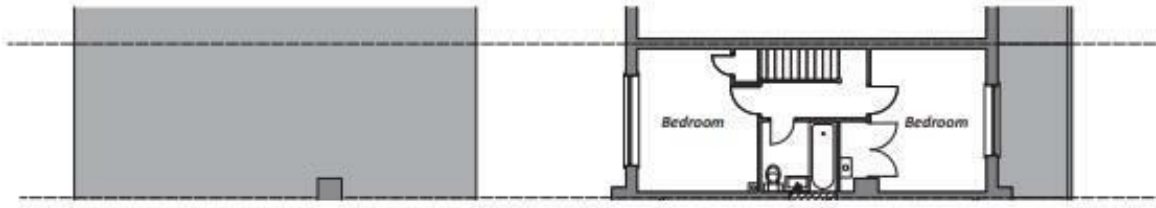
Offers Over £375,000

Freehold

phillipmann
we do more

www.phillipmann.com

Proposed First Floor



Proposed Ground Floor



inbrief...

Phillip Mann estate agents are delighted to offer for sale this immaculate, refurbished seaside residence. Situated on Seaford seafront with stunning sea views, views towards Newhaven Harbour and within easy reach of some iconic walks over the Seven Sisters.

The property has new double glazing throughout, has been rewired and has new gas fired central heating.

The entrance with a double glazed door leads to the hallway which has laminate flooring and a radiator. The cloakroom has a close coupled w/c and a wash hand basin set into a vanity unit and a window to the front.

The open plan living area has laminate flooring, bi-folding full height doors to the front with access to the garden. The kitchen has been fitted with a good range of high gloss wall and base units comprising a stainless steel sink and drainer unit with cupboards below, there is a built in electric cooker and hob with a hood above, further appliance spaces and a window.

There are stairs to the first floor landing with a radiator. The principle bedroom is a large double room with built in wardrobes and double doors to the front to an enclosed glass balcony benefiting from stunning sea views and views towards Newhaven Harbour. The second bedroom is a good size double room with a built in cupboard a radiator and a window to the rear.

The family bathroom has been fitted with a panel bath with mixer taps and a shower over, a w/c and wash hand basin set into a vanity unit, part tiled walls, an extractor fan and a skylight.

Outside there is a landscaped rear garden which is enclosed with a low wall benefiting from direct sea views.

The property benefits from off road parking for 2 vehicles and is to be sold with NO ONGOING CHAIN.



Council Tax Band: B

Energy Rating: C

moreinfo...



Phillip Mann Seaford Office
1-3 Dane Road, Seaford, East Sussex, BN25 1LG
01323 898666

To see more details on this & all our homes go to
www.phillipmann.com