



Connells

Gibbons Hill Road
Dudley



Property Description

This well-maintained semi-detached home is situated in the desirable residential area of Sedgley, known for its appeal. It presents significant potential with its spacious living areas, making it an excellent choice for first-time buyers and families alike. The property features two reception rooms, a wet room, and a bathroom, and it is particularly attractive due to the absence of an upward chain. Additionally, its prime location offers convenient access to excellent transport links, including bus routes, Sedgley High Street, local shops, amenities, and schools.

Entrance Hall

Double glazed door to the front elevation, double glazed window to the front, stairs to first floor accommodation, understairs storage cupboard, central heating radiator.

Lounge

15' x 10' 11" (4.57m x 3.33m)

Double glazed window to the rear elevation, gas fire point with feature surround, central heating radiator.

Dining Room

11' 2" x 10' 11" (3.40m x 3.33m)

Double glazed window to the rear elevation, electric fire with tiled surround, central heating radiator.

Kitchen

11' 1" x 7' 3" (3.38m x 2.21m)

A fitted kitchen to include base units with work surfaces over, one bowl stainless steel sink & drainer unit with mixer tap over, gas cooker point, plumbing for washing machine, space for domestic appliances, double glazed window to the front elevation

Hallway

Double glazed door to the front & rear elevations .

Wet Room

Walk-in shower over, wash hand basin, low level w.c., double glazed window to the front elevation.

Store

7' 3" x 6' 7" (2.21m x 2.01m)

First Floor

Landing

Double glazed window to the front elevation, loft access.

Bedroom One

15' 1" x 10' 9" (4.60m x 3.28m)

Double glazed window to the rear, fitted cupboard, central heating radiator.

Bedroom Two

10' 6" x 9' 10" (3.20m x 3.00m)

Double glazed window to the rear, storage cupboard, wall mounted central heating boiler.

Bedroom Three

9' 10" x 7' 3" (3.00m x 2.21m)

Double glazed window to the front, fitted cupboard.

Bathroom

Suite to comprise bath, wash hand basin, low level w.c., tiling, central heating radiator, double glazed window to the side.

Outside

To the front of the property path approach to front door with various shrubs & borders. Rear garden having paved patio area, step approach to further lawned area with various shrubs & borders.

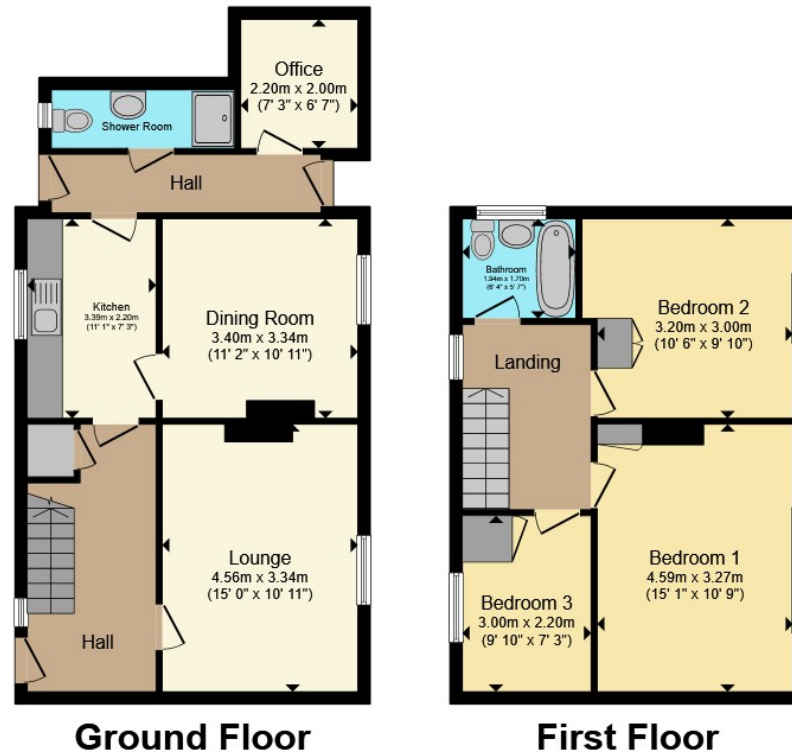
Agents Note

We are aware that there is Tree Protection Order's in place. Please contact the branch for more details.









Total floor area 104.1 m² (1,120 sq.ft.) approx
 This floor plan is for illustrative purposes only. It is not drawn to scale. Any measurements, floor areas (including any total floor area), openings and orientation are approximate. No details are guaranteed, they cannot be relied upon for any purpose and they do not form part of any agreement. No liability is taken for any error, omission or misstatement. A party must rely upon its own inspection(s). Powered by www.propertybox.io



To view this property please contact Connells on

T 01384 214 770
E dudley@connells.co.uk

4 & 5 Stone Street
 DUDLEY DY1 1NS

EPC Rating: Council Tax
 Awaited Band: B

Tenure: Freehold

view this property online connells.co.uk/Property/DUD314767



1. MONEY LAUNDERING REGULATIONS Intending purchasers will be asked to produce identification documentation at a later stage and we would ask for your co-operation in order that there will be no delay in agreeing the sale. 2. These particulars do not constitute part or all of an offer or contract. 3. The measurements indicated are supplied for guidance only and as such must be considered incorrect. Potential buyers are advised to recheck measurements before committing to any expense. 4. We have not tested any apparatus, equipment, fixtures, fittings or services and it is in the buyers interest to check the working condition of any appliances.

Connells Residential is registered in England and Wales under company number 1489613, Registered Office is Cumbria House, 16-20 Hockliffe Street, Leighton Buzzard, Bedfordshire, LU7 1GN. VAT Registration Number is 500 2481 05.

See all our properties at www.connells.co.uk | www.rightmove.co.uk | www.zoopla.co.uk

Property Ref: DUD314767 - 0007