

**LONDON
VICTORIA
GROUPS** 



**LONDON
VICTORIA
GROUPS** 



**LONDON
VICTORIA
GROUPS** 

Hawksbury Heights, 11 Hewson Way

, London SE17 1JX

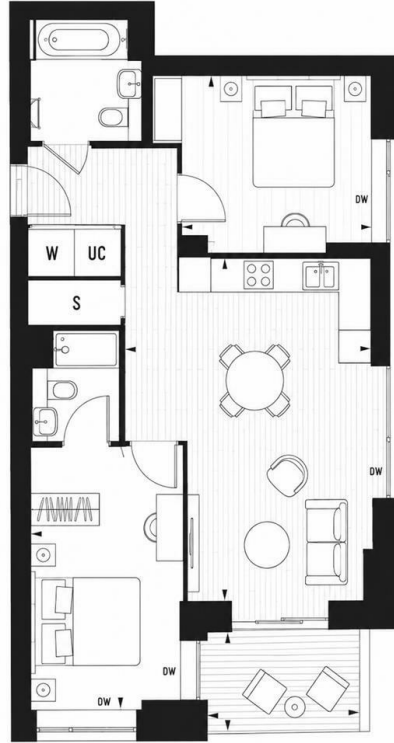
- Two-bedroom, two-bathroom apartment
- 24-hour concierge service
- Residents' sky lounge
- Rooftop terraces
- EPC-B
- Bright open-plan living, dining, and kitchen area
- Fully equipped residents' gymnasium
- Residents' lounge
- Elephant & Castle Station (Northern Line, Bakerloo Line & National Rail services)
- CTB-E

£3,850 Per Month



**LONDON
VICTORIA
GROUPS** 

Local Authority **Southwark**
Council Tax Band **E**
EPC Rating



London Office Office
Spaces Victoria, 25 Wilton Road, Pimlico,
London, SW1V 1LW

Contact
020 3084 3094
XL@londonvictoriagroups.co.uk
www.londonvictoriagroups.co.uk

Agents Note: Whilst every care has been taken to prepare these particulars, they are for guidance purposes only. All measurements are approximate and for general guidance purposes only and whilst every care has been taken to ensure accuracy, they should not be relied upon and potential buyers/tenants are advised to recheck the measurements.