



Press Road, NW10

£160,000

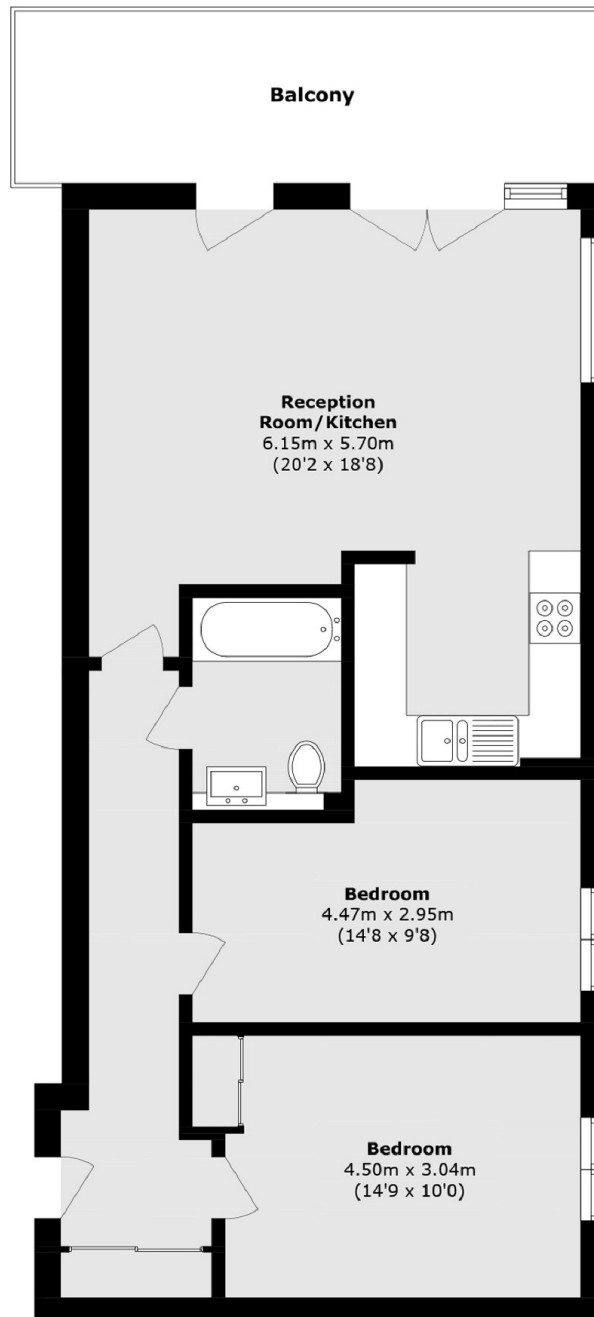
SHARED OWNERSHIP This two bedroom, sixth floor apartment features a spacious open plan living area with a well equipped kitchen, and two double bedrooms. The property further benefits from a private balcony with beautiful views overlooking Brent Reservoir and underground parking.

Located on a residential street nestled in vibrant Neasden, with its lovely open spaces, including Brent Reservoir and Welsh Harp Close. Neasden underground station (Jubilee Line) is situated 0.6 miles away.

Features

- Sixth Floor Apartment
- Two Bedrooms
- Lift Access
- Private Balcony
- Open-Plan Living Area
- Underground Parking Available

Press Road, London, NW10



Total area (approx.): 72.5 sq. m (780.3 sq. ft)
Balcony area (approx.): 12.8 sq. m (137.7 sq. ft)