

Fulham Road, SW6

£4,700 Per week

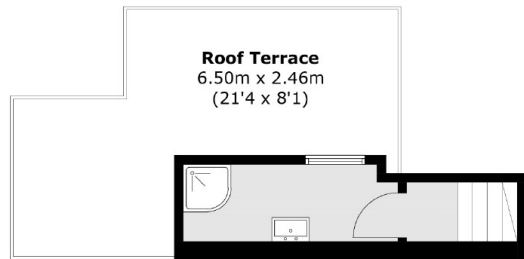
An extremely spacious and rarely available split level apartment. With four double bedrooms, two receptions, a stunning kitchen, three shower rooms and a large private roof terrace.

Located in the heart of Fulham Broadway on the doorstep of the local amenities it has to offer including the great selection of shops, cafes and restaurants and just a hundred yards from the tube station offering links

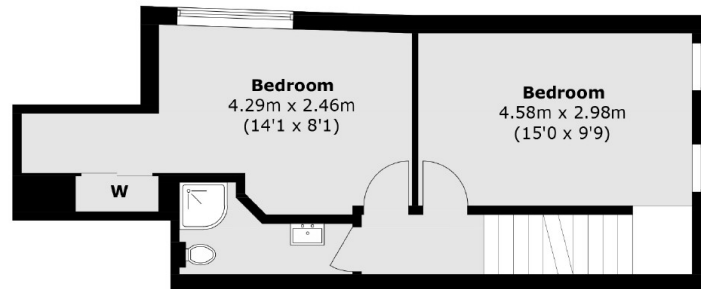
Features

Spacious Split Level Flat
Located In The Heart Of Fulham
Four Double Bedrooms
Three Shower Rooms
Recently Renovated
Large Private Roof Terrace

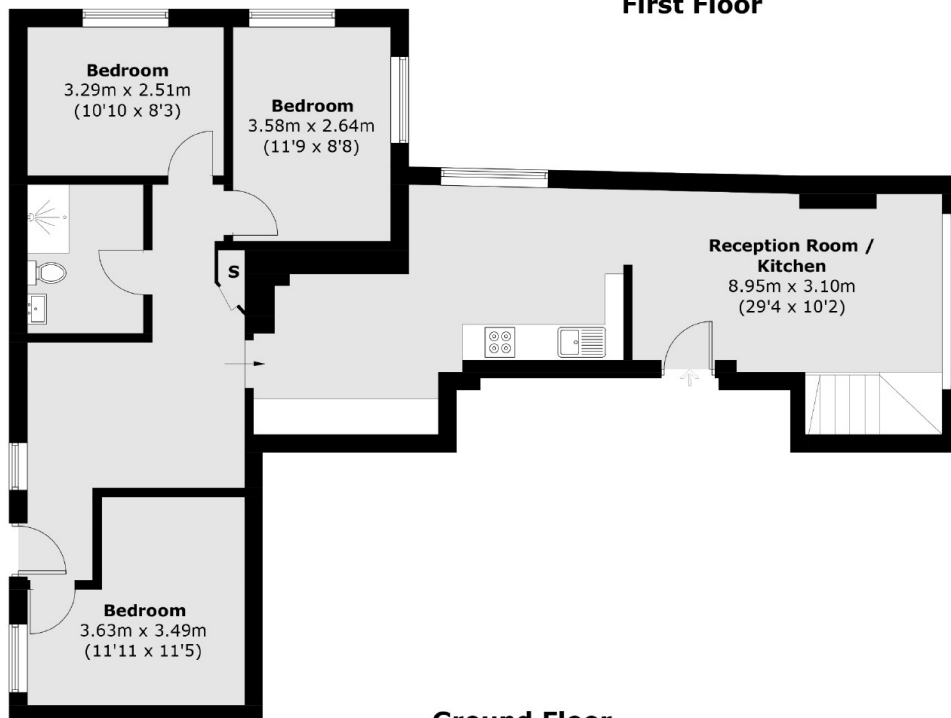
Fulham Road,
London, SW6



Second Floor



First Floor



Ground Floor

Total area (approx.): 135.8 sq. m (1,461.7 sq. ft)
Roof Terrace (approx.): 17.6 sq. m (189.4 sq. ft)