



Manchester Street, W1U

£460 Per week

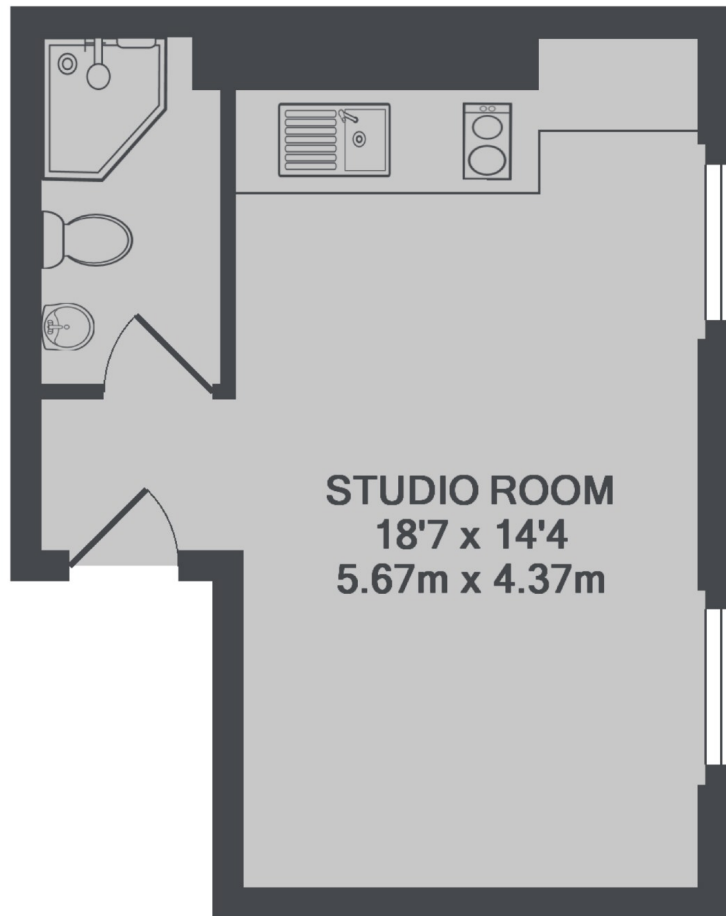
This studio apartment is on the third floor of a Georgian town house in the heart of Marylebone Village. The flat has lots of natural light throughout, wood flooring and modern fixtures & Fittings.

Manchester Street is in the centre of Marylebone Village with Chiltern Firehouse on your doorstep. Bond Street Station is half a mile away.

Features

- Third Floor
- Studio Apartment
- Modern Kitchen
- Wood Flooring
- Unfurnished
- The Portman Estate

Manchester Street, London, W1U



TOTAL APPROX. FLOOR AREA 242 SQ.FT. (22.5 SQ.M.)

Dexters

Marylebone
53-55 Weymouth Street
London
W1G 8NJ
Lettings
0207 224 5545

Energy Rating: D. We aim to make our particulars both accurate and reliable. However they are not guaranteed; nor do they form part of an offer or contract. If you require clarification on any points then please contact us, especially if you're traveling some distance to view. Please note that appliances and heating systems have not been tested and therefore no warranties can be given as to their good working order.

 **RICS** | Regulated
Estate Agent
and Letting Agent

dexters.co.uk