



IAN PATERSON

exp<sup>®</sup> UK

@ [ian.paterson@exp.uk.com](mailto:ian.paterson@exp.uk.com)

🌐 [ianpaterson.exp.uk.com](http://ianpaterson.exp.uk.com)

☎ 0787 594 6183

## Lullingstone Crescent, The Rings

Offers In Region Of £240,000

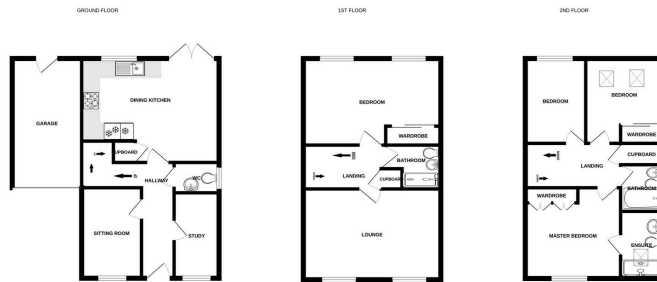
🛏️ 4 🚿 2 🛋️ 3



- IMPRESSIVE PERSIMMON BUILT HOME
- MASTER SUITE WITH EN SUITE SHOWER
- THREE RECEPTION ROOMS
- IDEAL SPOT FOR HOME OFFICE WORKER
- GREAT LOCALITON
- FOUR BEDROOMS
- SUPERB KITCHEN/DINER
- WONDERFUL REAR GARDEN
- GARAGE & DRIVEWAY
- EPC RATING C



QUOTE REF: IP0768 WHEN CALLING TO ARRANGE YOUR VIEWING, OR, FOR MORE INFORMATION. Substantial 'Persimmon' built four bedroom, three reception room family home sitting upon a lovely plot in a well regarded location. Chain Free Sale, view early.



While every attempt has been made to ensure the accuracy of the figures contained here, measurements of doors, windows, areas and any other items are approximate and no responsibility is taken for any error, omission or misstatement. This plan is for illustrative purposes only and should be used as a guide to the layout of the property. The actual layout and dimensions may vary from those shown and no guarantee as to their accuracy or efficiency can be given. Plans will vary slightly.

