



## Queen Anne Street, W1G

£1,250,000

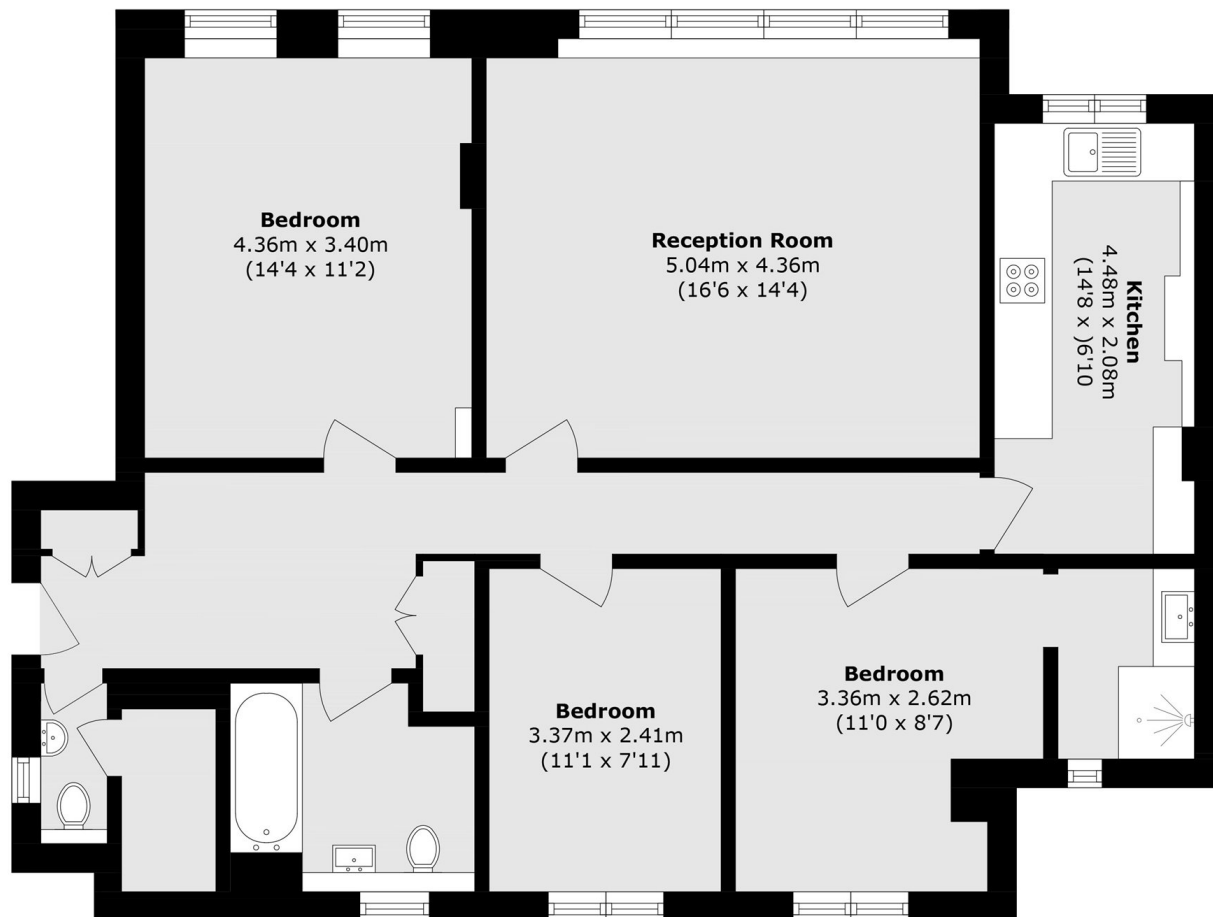
A bright three bedroom apartment located on the top floor of a purpose built block just off Harley Street. The bright interior has potential for further development. The top floor accommodation has a bright southerly facing aspect overlooking the local roof tops. The property has a reception-dining room, separate kitchen, three double bedrooms, one with an en suite shower room, main bathroom and guest W.C.

Conveniently located for Marylebone High Street, Oxford Street and Regents Park. The local stations are Oxford Circus and Tottenham Court Road for the Elizabeth Line.

### Features

Top (Fifth) Floor  
Bright Southerly Facing Aspect  
Three Double Bedrooms  
Reception/Dining Room  
En Suite

# Queen Anne Street, London, W1G



## Fifth floor

Total area (approx.): 95.6 sq. m (1029.0 sq. ft)