



Chapelwent Road, Haverhill, CB9 9SD

**CHEFFINS**

## Chapelwent Road

Haverhill,  
CB9 9SD

A beautifully presented one bedroom apartment located close to amenities and transport links. The property benefits from fitted kitchen, garage, and driveway. Available 6th July 2026.

- One Bedroom
- Sitting Room
- Bathroom
- Kitchen
- EPC Rating C
- Council Tax Band B



## £935 Per Month





### **Entrance Hall**

Stairs to first floor

### **Sitting Room**

Juliet balcony to front, opening to:

### **Inner Hallway**

Open to:

### **Kitchen**

Fitted wall and base units with worktop over, integrated oven and hob, integrated dishwasher, integrated fridge freezer, window to front

### **Bedroom**

Window to front, storage cupboard, two double integral wardrobes

### **Bathroom**

Window to rear, panelled bath with shower over, wc, wash hand basin

### **Driveway and garage**

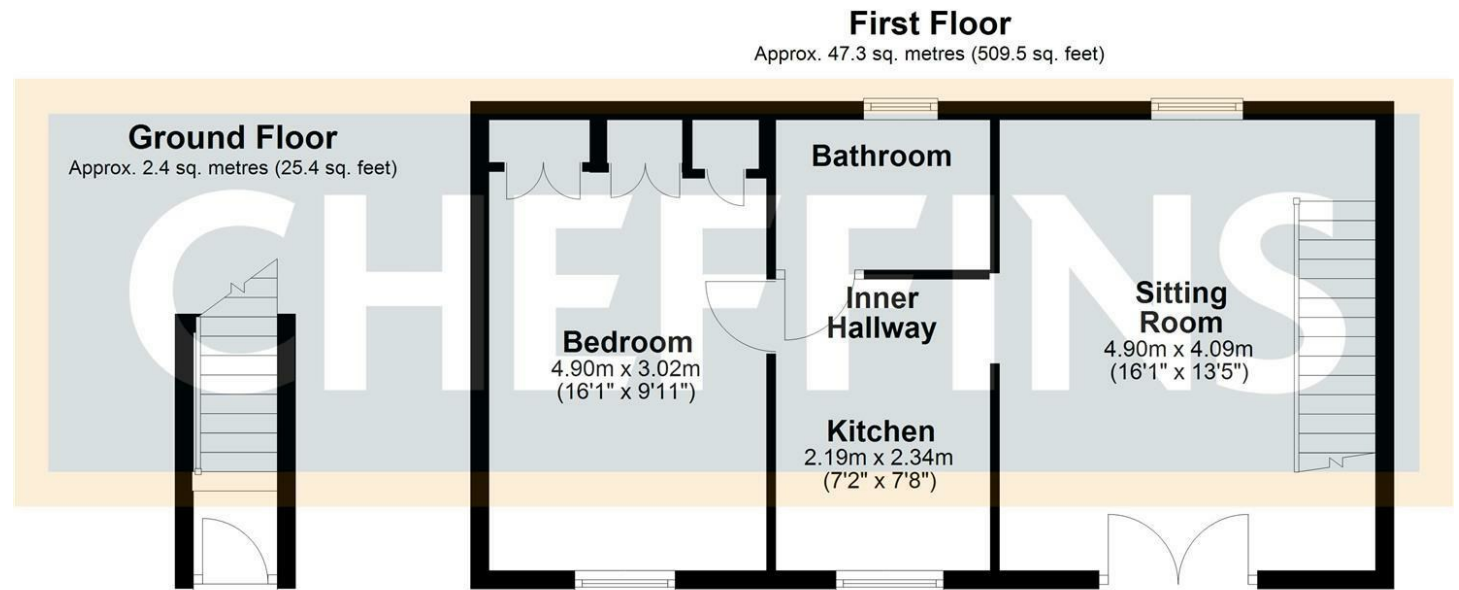
Driveway and garage to front

### **Holding Deposit**

£215.00

### **Material Information**

For more information on this property please refer to the Material Information brochure on our Website



### Energy Efficiency Rating

	Current	Potential
<i>Very energy efficient - lower running costs</i>		
(92 plus) <b>A</b>		
(81-91) <b>B</b>		
(69-80) <b>C</b>	73	75
(55-68) <b>D</b>		
(39-54) <b>E</b>		
(21-38) <b>F</b>		
(1-20) <b>G</b>		
<i>Not energy efficient - higher running costs</i>		
<b>England &amp; Wales</b>	EU Directive 2002/91/EC	

Total area: approx. 49.7 sq. metres (534.9 sq. feet)

### Agents note:

For more information on this property please refer to the Material Information Brochure on our website.

Cavendish House, 27a High Street, Haverhill, Suffolk, CB9 8AD | 01440 707076 | cheffins.co.uk

IMPORTANT: we would like to inform prospective purchasers that these sales particulars have been prepared as a general guide only. A detailed survey has not been carried out, nor the services, appliances and fittings tested. Room sizes should not be relied upon for furnishing purposes and are approximate. If floor plans are included, they are for guidance only and illustration purposes only and may not be to scale. If there are any important matters likely to affect your decision to buy, please contact us before viewing the property.

