

RIVERHOMES

Chiswick Staithe
Chiswick W4

£2,000,000
Freehold



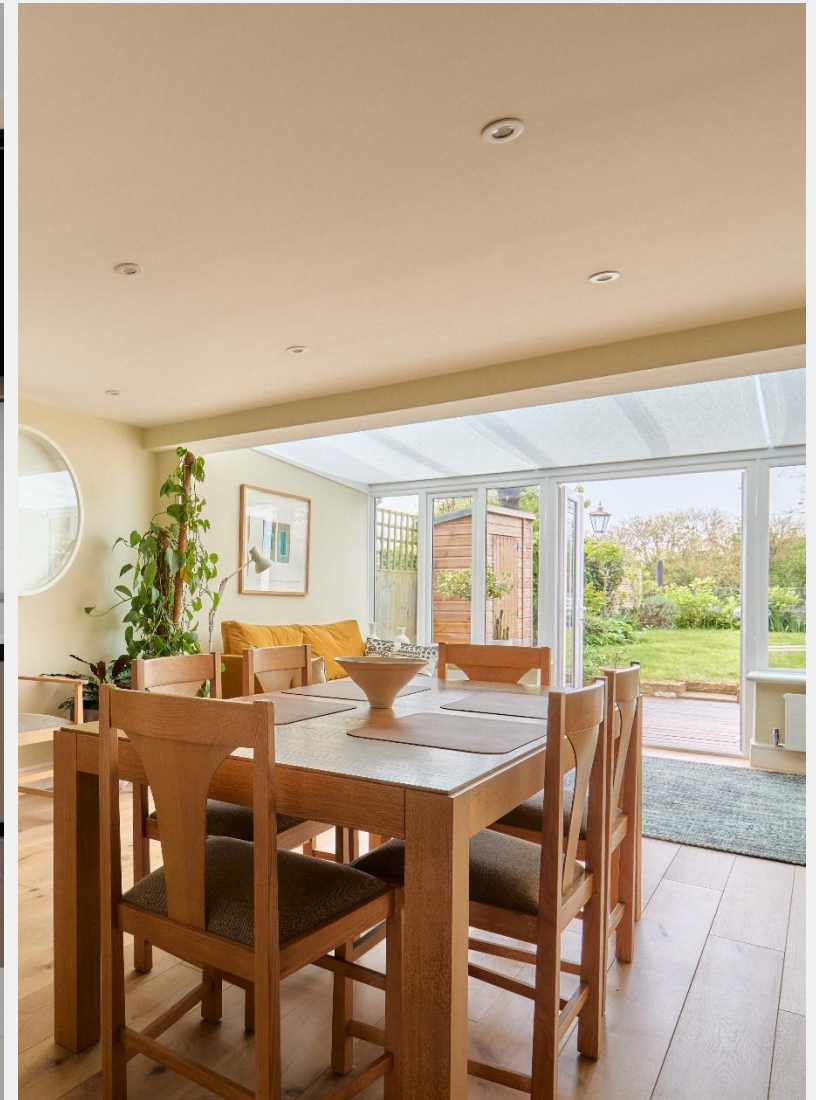
Chiswick Staithe Chiswick W4

Set within the quietly celebrated modernist enclave of Chiswick Staithe, this four-bedroom, three-storey house unfolds directly onto the Thames, with a private jetty and uninterrupted west-facing views. Thoughtfully reworked in recent years, resulting in a calm, turn-key interior that balances mid-century character with a more contemporary sensibility. The architecture is rooted in late 20th-century modernism, where volume, light and outlook take precedence. Floor-to-ceiling glazing draws the river deep into the plan, with almost every room oriented

towards the water. The effect is immersive rather than decorative, with shifting light, passing boats and long sunsets forming part of the daily rhythm of the house.

Living spaces are arranged to make the most of this relationship. A generous kitchen, dining and family room sits at garden level, opening directly onto a landscaped lawn that meets the river's edge. Beyond, a timber deck and private jetty extend the footprint outward, creating a series of places to sit, eat and gather, all with the Thames as a constant backdrop.





Chiswick Staithe Chiswick W4

Upstairs, a full-width reception occupies the first floor, conceived as a quieter vantage point over the water. The upper levels are arranged as four bedrooms across two floors, each simply detailed and well-proportioned, with a pair of bathrooms serving the plan.

Chiswick Staithe itself is something of a hidden address. Designed around a shared green and set back from the road, it has a rare sense of enclosure and community. The river here feels unexpectedly rural, with a tree-lined opposite

bank and open skies, yet central London remains within easy reach.

Grove Park and Dukes Meadows are moments away, with walking and running routes tracing the river's edge. Rail connections from Chiswick station provide a straightforward route into Waterloo, while Turnham Green and Kew Bridge offer access to the Underground. Heathrow is within easy reach.

KEY FEATURES

4 bedrooms

3 bathrooms

3 floors

Late 20th century modernism architecture

Floor-to-ceiling glazing that highlights the River Thames

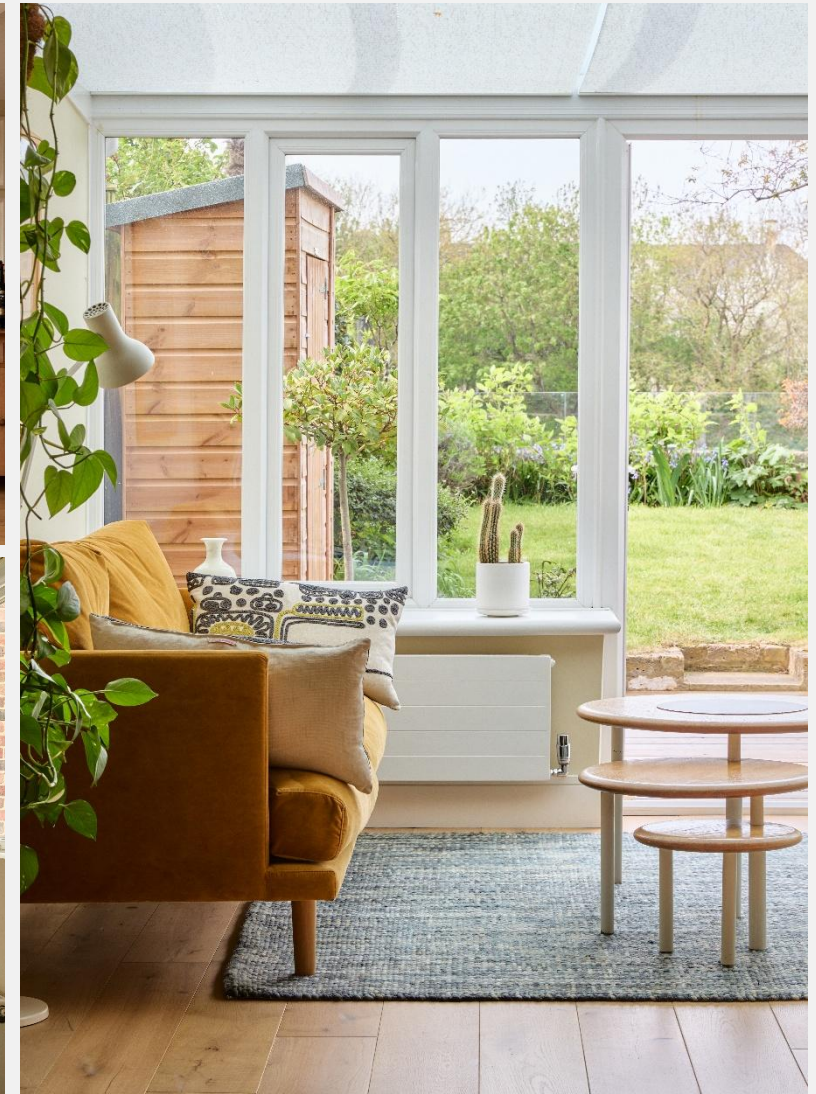
Unfolds directly onto the River Thames

Private timber deck and jetty

Rear garden

Walking distance to Grove Park and Dukes Meadows

Excellent transport links from Chiswick Station





ENERGY PERFORMANCE CERTIFICATE

Score	Energy rating	Current	Potential
92+	A		
81-91	B		83 B
69-80	C	75 C	
55-68	D		
39-54	E		
21-38	F		
1-20	G		

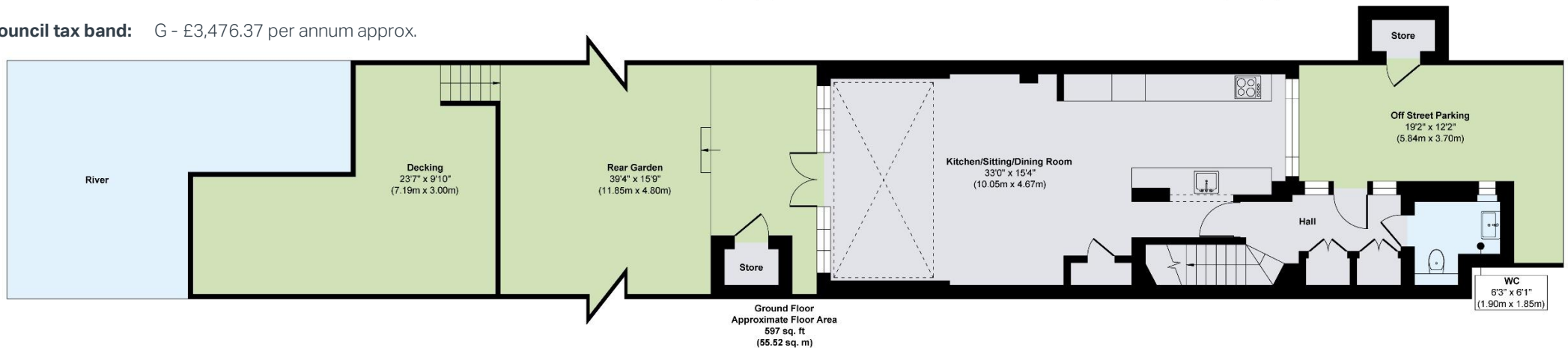
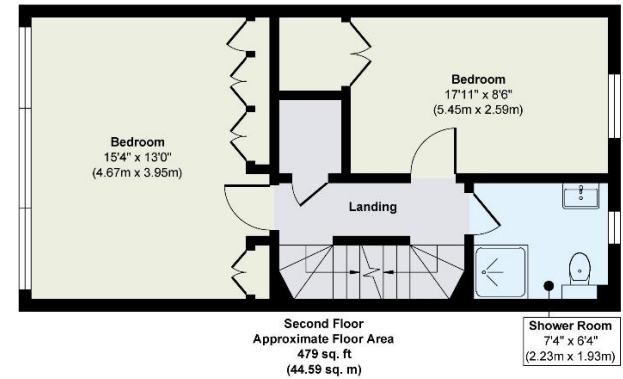
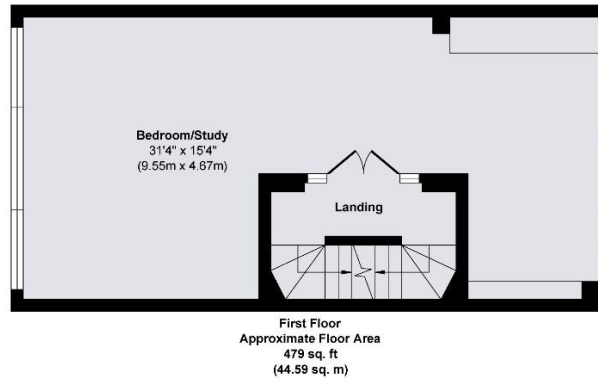
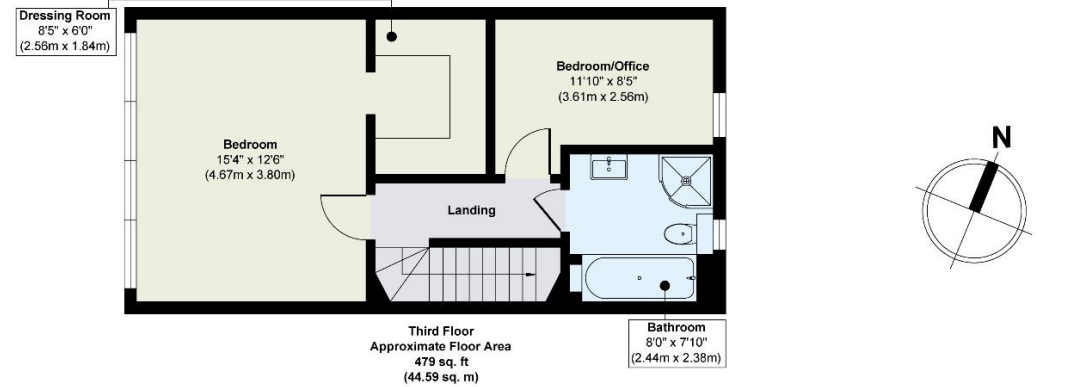
KEY INFORMATION

Local authority: London Borough of Hounslow

Internal area: 2,034 sq. ft. / 189.29 sq. m

No. of bedrooms: 4

Council tax band: G - £3,476.37 per annum approx.





RIVERHOMES

West London Branch
28 Thames Road
London
W4 3RJ

020 8995 0500
www.riverhomes.co.uk



World Waterside Ltd trading as riverhomes for themselves and its clients give notice that 1: They are not authorised to make or give any representations or warranties in relation to the property either here or elsewhere, either on their own behalf or on behalf of their client or otherwise. 2: These particulars do not form part of any offer or contract and must not be relied upon as statements or representations of fact. Any areas, measurements or distances are approximate. The text, photographs and plans are for guidance only and are not necessarily comprehensive. 3: It should not be assumed that the property has all necessary planning, building regulation or other consents and any services, equipment or facilities have not been tested. 4: Lease details, service charges, ground rent (where applicable) and council tax are given as a guide only and should be checked and confirmed by your Solicitor prior to exchange of contracts. 5: They assume no responsibility and any intending purchasers or tenants must satisfy themselves by inspection or otherwise as to the correctness of each of the statements contained within these particulars. If you require clarification of any points please contact us.