



Guide Price
£695,000

Freehold

4x  2x  4x 

**Union Road, Deal, Kent,
CT14**

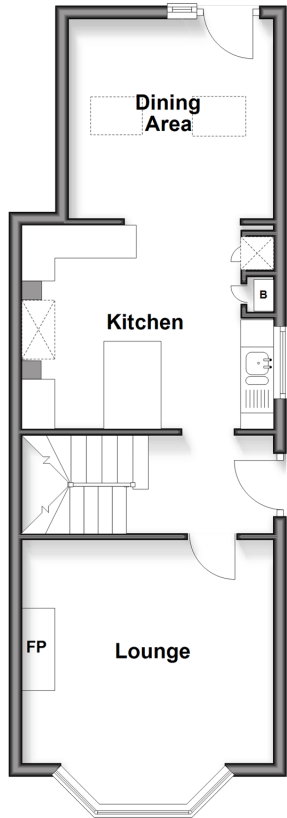
OVER 60?

Secure this property
for up to **59% less!**

Wards
Helping you move forwards

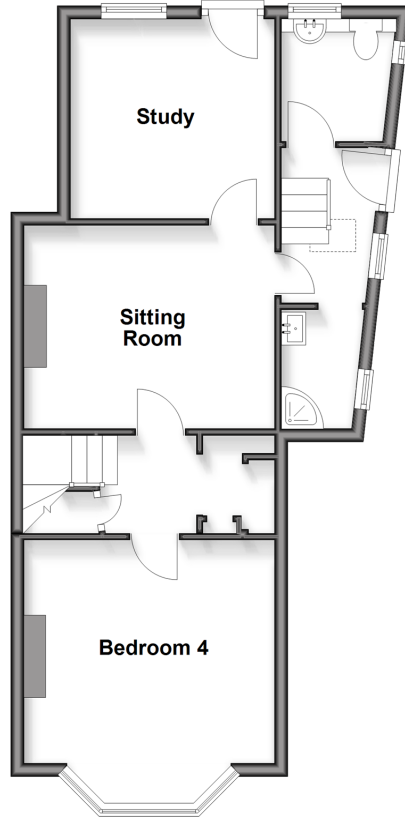
Ground Floor

Approx. 41.5 sq. metres (446.3 sq. feet)



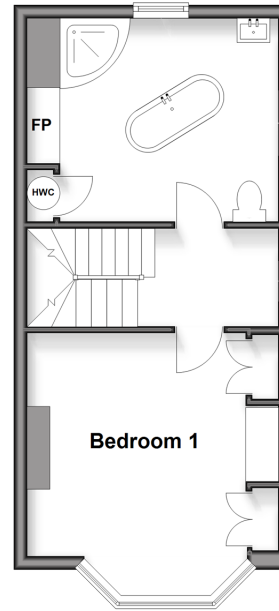
Split Level Lower Ground Floor

Approx. 50.9 sq. metres (547.4 sq. feet)



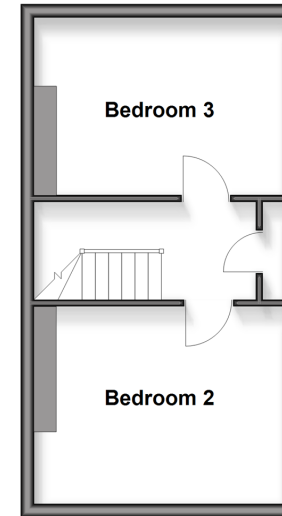
First Floor

Approx. 31.7 sq. metres (341.0 sq. feet)



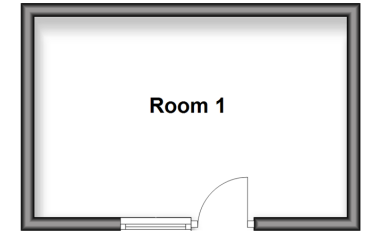
Second Floor

Approx. 28.3 sq. metres (304.7 sq. feet)



Outbuilding

Approx. 14.6 sq. metres (157.2 sq. feet)



Accommodation

GROUND FLOOR

Entrance Hallway

Lounge : 12'9 x 11'10 (3.89m x 3.61m)

Kitchen : 12'9 x 10'8 (3.89m x 3.25m)

Dining Area : 10'3 x 9'9 (3.13m x 2.97m)

SPLIT LEVEL LOWER GROUND FLOOR

Landing

Bedroom 4: 12'3 x 11'1 (3.74m x 3.38m)

Sitting Room: 12'0 x 10'1 (3.66m x 3.08m)

Study: 10'2 x 9'9 (3.10m x 2.97m)

Cloakroom

Shower Room

FIRST FLOOR

Landing

Bedroom 1: 13'2 x 12'0 (4.02m x 3.66m)

Bathroom: 11'10 x 10'9 (3.61m x 3.28m)

SECOND FLOOR

Landing

Bedroom 3: 13'1 x 8'9 (3.99m x 2.67m)

Bedroom 2: 13'1 x 9'10 (3.99m x 3.00m)

OUTBUILDING

Room 1

OUTSIDE

Front and Rear Gardens



Main features

- Being sold with no onward chain and all furnishings optional
- Sought after location within walking distance of the beach, town centre and train station
- Immaculate condition throughout
- Versatile living space over four floors
- Generous private garden



Nearest Schools

Primary Schools: Sandown School 0.2 miles, Warden House Primary 0.8 miles, Deal Parochial C of E Primary 0.9 miles

Secondary Schools: Brewood Secondary School 0.5 miles,



Transport Information

Train Stations: Deal 0.2 miles, Walmer 1.7 miles, Sandwich 3.9 miles



Address

Union Road, Deal, Kent, CT14



Directions

For directions to this property please contact us.



Wards
Helping you move forwards

Call Deal Branch 01304 361420 ■ wardsofkent.co.uk



- Legal advice should be taken to verify fixtures/fittings, planning, alterations and/or lease details
- Appliances & services are untested, dimensions are approximate and floor plans are not to scale
- Through a Homewise Home For Life Plan people aged 60+ can secure this property for up to 59% less, by purchasing a Lifetime Lease

EPC RATING

CURRENT:	POTENTIAL:
D(60)	B(82)

10630900/20260212/BG/WSM