



Cosmeston Drive, Penarth, CF64 5FA

welcome to

Cosmeston Drive, Penarth

GUIDE PRICE £400,000 - £410,000. A beautifully presented four bed home offered with NO CHAIN set in the popular Cosmeston Drive area. Highlights include a spacious lounge, kitchen/diner open plan to a sitting room, conservatory, master bedroom with walk-in wardrobe & en-suite and parking for 3 cars.

Entrance Porch

Enter via a part double glazed door, double glazed window to front, bench seat and door to lounge

Lounge

15' x 14' (4.57m x 4.27m)

Double glazed window to front, stairs to first floor, contemporary radiator and door to kitchen/diner.

Kitchen/Diner

15' x 9' 6" (4.57m x 2.90m)

Double glazed window to rear, space for table and chairs, single bowl and drainer sink unit with mixer tap over, floor and wall mounted kitchen units with work surface over, tiled splash-backs, electric oven and gas hob with cooker hood over, space for washing machine, fridge-freezer and dishwasher, laminate floor, radiator and spotlights, open plan to a snug/sitting area and the conservatory.

Sitting Room/Snug

22' 4" x 7' 2" (6.81m x 2.18m)

Double glazed window to front, double glazed double door to rear, range of floor and wall mounted kitchen units, space for washing machine, laminate flooring, radiator and spotlights.

Conservatory

9' 3" x 9' 1" (2.82m x 2.77m)

Double glazed double door to side, double glazed windows to three sides, pitched roof and laminate floor.

Landing

Loft access, doors to four bedrooms and bathroom.

Bedroom 1

14' 3" x 10' 4" (4.34m x 3.15m)

Double glazed window to front, radiator, spotlights, archway to dressing area and door to ensuite.

Walk-in Wardrobe

7' 8" x 4' 10" (2.34m x 1.47m)

Double glazed window to rear, loft access, radiator, wall mounted gas central heating boiler and laminate floor.

Ensuite

Double glazed window to rear, contemporary three piece suite with wc, wall mounted wash hand basin set into a vanity unit and shower cubicle, tiled walls and floor, towel style radiator and spotlights.

Bedroom 2

10' 9" x 10' 6" max (3.28m x 3.20m max)

Double glazed window to front, built-in double wardrobe and contemporary style radiator.

Bedroom 3

10' 6" max x 9' 8" (3.20m max x 2.95m)

Double glazed window to rear, built-in double wardrobe and contemporary style radiator.

Bedroom 4

8' x 6' 4" (2.44m x 1.93m)

Double glazed window to front and radiator

Bathroom

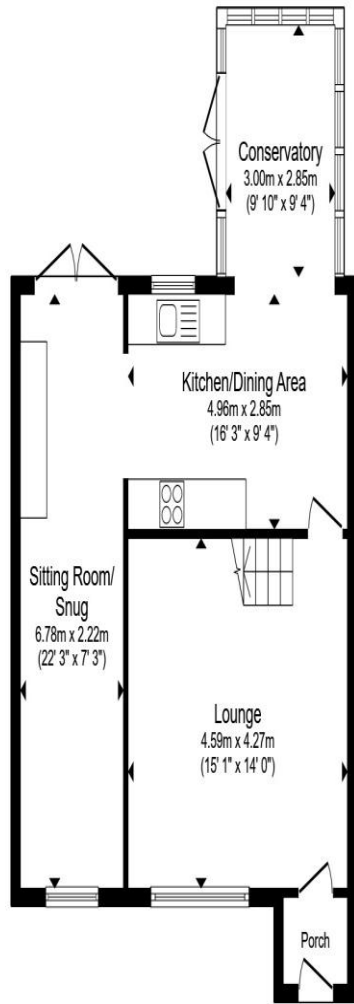
Double glazed window to rear, panelled bath, pedestal wash hand basin, wc, built in storage cupboard, tiled walls to dado height and radiator.

Front Garden

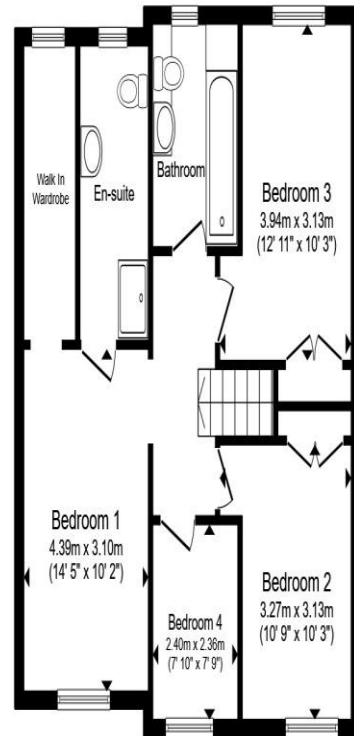
Driveway laid to stone chippings providing parking for 2/3 cars and side access to rear garden via a door and covered lane.

Rear Garden

Enclosed rear garden with timber fence and brick wall boundaries, laid to lawn and stone chippings, garden shed to remain.



Ground Floor



First Floor

Total floor area 121.2 m² (1,305 sq.ft.) approx

This floor plan is for illustrative purposes only. It is not drawn to scale. Any measurements, floor areas (including any total floor area), openings and orientation are approximate. No details are guaranteed, they cannot be relied upon for any purpose and they do not form part of any agreement. No liability is taken for any error, omission or misstatement. A party must rely upon its own inspection(s). Powered by www.propertybox.io



Welcome to

Cosmeston Drive, Penarth

- NEW GUIDE PRICE £400,000 - £410,000
- Four-bedroom family home offered with NO CHAIN in the sought after Cosmeston Drive area.
- Master bedroom with walk-in wardrobe and a contemporary en-suite
- A spacious lounge, kitchen/diner opening plan to a sitting/snug and a conservatory
- Enclosed, private rear garden and off-road parking for three cars.

Tenure: Freehold EPC Rating: C
Council Tax Band: D

guide price

£400,000

directions to this property:

For Satnavs the postcode is CF64 5FA and the property is marked by our For Sale board.



view this property online allenandharris.co.uk/Property/PNR106086



Property Ref:
PNR106086 - 0006

1. MONEY LAUNDERING REGULATIONS Intending purchasers will be asked to produce identification documentation at a later stage and we would ask for your co-operation in order that there is no delay in agreeing the sale. 2. These particulars do not constitute part or all of an offer or contract. 3. The measurements indicated are supplied for guidance only and as such must be considered incorrect. Potential buyers are advised to recheck measurements before committing to any expense. 4. We have not tested any apparatus, equipment, fixtures or services and it is in the buyers interest to check the working condition of any appliances. 5. Where an EPC, or a Home Report (Scotland only) is held for this property, it is available for inspection at the branch by appointment. If you require a printed version of a Home Report, you will need to pay a reasonable production charge reflecting printing and other costs. 6. We are not able to offer an opinion either written or verbal on the content of these reports and this must be obtained from your legal representative. 7. Whilst we take care in preparing these reports, a buyer should ensure that his/her legal representative confirms as soon as possible all matters relating to title including the extent and boundaries of the property and other important matters before exchange of contracts.

Allen & Harris is a trading name of Sequence (UK) Limited which is registered in England and Wales under company number 4268443, Registered Office is Cumbria House, 16-20 Hockliffe Street, Leighton Buzzard, Bedfordshire, LU7 1GN. VAT Registration Number is 500 2481 05.


allen & harris



029 2070 5528



penarth@allenandharris.co.uk



6 Andrews Buildings, Stanwell Road, PENARTH,
Wales, CF64 2AA



allenandharris.co.uk