



Connells

Mere Croft
Norton Canes, Cannock



Entrance Porch

Having a double glazed front entrance door, tiled flooring and door to hallway

Hallway

Having carpeted flooring, ceiling light point and doors to living room, kitchen, bedroom 1&2 and wet room

Living Room

Having a double glazed window to the side aspect, radiator, ceiling light point, fireplace and double doors and windows to the conservatory

Conservatory

Having double glazed windows and doors to the rear garden, ceiling fan light and laminate flooring

Kitchen

Being a fitted kitchen with a range of wall, base and drawer units with laminate work surfaces over and having a sink/drain, space for double oven, extractor hood, tiled splash-backs, plumbing, space for appliances, space for dining furniture, radiator, ceiling spotlights, vinyl flooring, storage cupboard, double glazed windows to the rear and side aspects and door to storage/utility room leading to the WC

Store/Utility

Having a double glazed window and door to the side aspect leading to the rear garden, fitted wall and base units, plumbing for utility purposes, space for appliances and door to WC

W.C

Having tiled walls and flooring, WC, wash hand basin and ceiling light point

Bedroom 1

Having a double glazed bay window to the front aspect, radiator, ceiling light point and carpeted flooring

Bedroom 2

Having a double glazed bay window to the front aspect, built in storage cupboards, radiator, ceiling light point, carpeted flooring and door to WC

W.C

Having a double glazed window to the side aspect, WC, ceiling light point and tiled walls and flooring

Wet Room

Having a double glazed window to the side aspect, WC, wash hand basin, shower, tiled walls, vinyl flooring, radiator and ceiling light point

Outside

Front

Having a large brick paved driveway suitable for multiple vehicles, mid-level brick wall with cast iron fencing, a variety of shrubs and gated access to the carport area leading to the rear garden

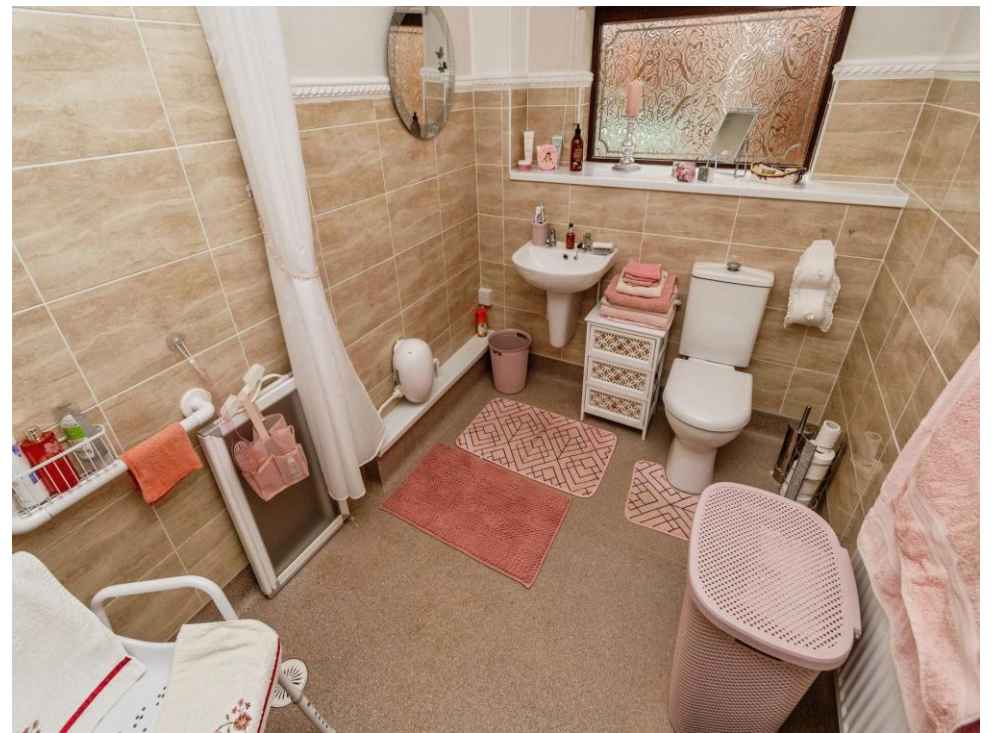
Rear

Being a mature rear garden and having borders filled with a variety of shrubs, floral displays and trees. Having both a patio and lawn area, garden shed and gated access to the carport area leading to the front

Side Access

Having gated access to both the front and the rear of the property, brick paved pathway, polycarbonate roof and space for bin storage









Total floor area 98.9 m² (1,065 sq.ft.) approx

This floor plan is for illustrative purposes only. It is not drawn to scale. Any measurements, floor areas (including any total floor area), openings and orientation are approximate. No details are guaranteed, they cannot be relied upon for any purpose and they do not form part of any agreement. No liability is taken for any error, omission or misstatement. A party must rely upon its own inspection(s). Powered by www.propertybox.io



To view this property please contact Connells on

T 01543 500923
E cannock@connells.co.uk

10-12 Wolverhampton Road
 CANNOCK WS11 1AH

EPC Rating: D Council Tax
 Band: C

Tenure: Freehold

view this property online connells.co.uk/Property/CNK108773



1. MONEY LAUNDERING REGULATIONS Intending purchasers will be asked to produce identification documentation at a later stage and we would ask for your co-operation in order that there will be no delay in agreeing the sale. 2. These particulars do not constitute part or all of an offer or contract. 3. The measurements indicated are supplied for guidance only and as such must be considered incorrect. Potential buyers are advised to recheck measurements before committing to any expense. 4. We have not tested any apparatus, equipment, fixtures, fittings or services and it is in the buyers interest to check the working condition of any appliances.

Connells Residential is registered in England and Wales under company number 1489613, Registered Office is Cumbria House, 16-20 Hockliffe Street, Leighton Buzzard, Bedfordshire, LU7 1GN. VAT Registration Number is 500 2481 05.

See all our properties at www.connells.co.uk | www.rightmove.co.uk | www.zoopla.co.uk

Property Ref: CNK108773 - 0002