



5 Parton Mews Parton Road, Churchdown, Gloucester, Gloucestershire,  
GL2 2AL  
£725 PCM

**TO LET**



- AVAILABLE END OF APRIL
- WILL BE FRESHLY PAINTED
- FRIDGE FREEZER
- FIRST COME FIRST SERVE PARKING
- GREAT LOCATION
- NEW CARPETS TO BE PUT IN
- WASHING MACHINE
- COOKER
- GROUND FLOOR
- COUNCIL TAX BAND A

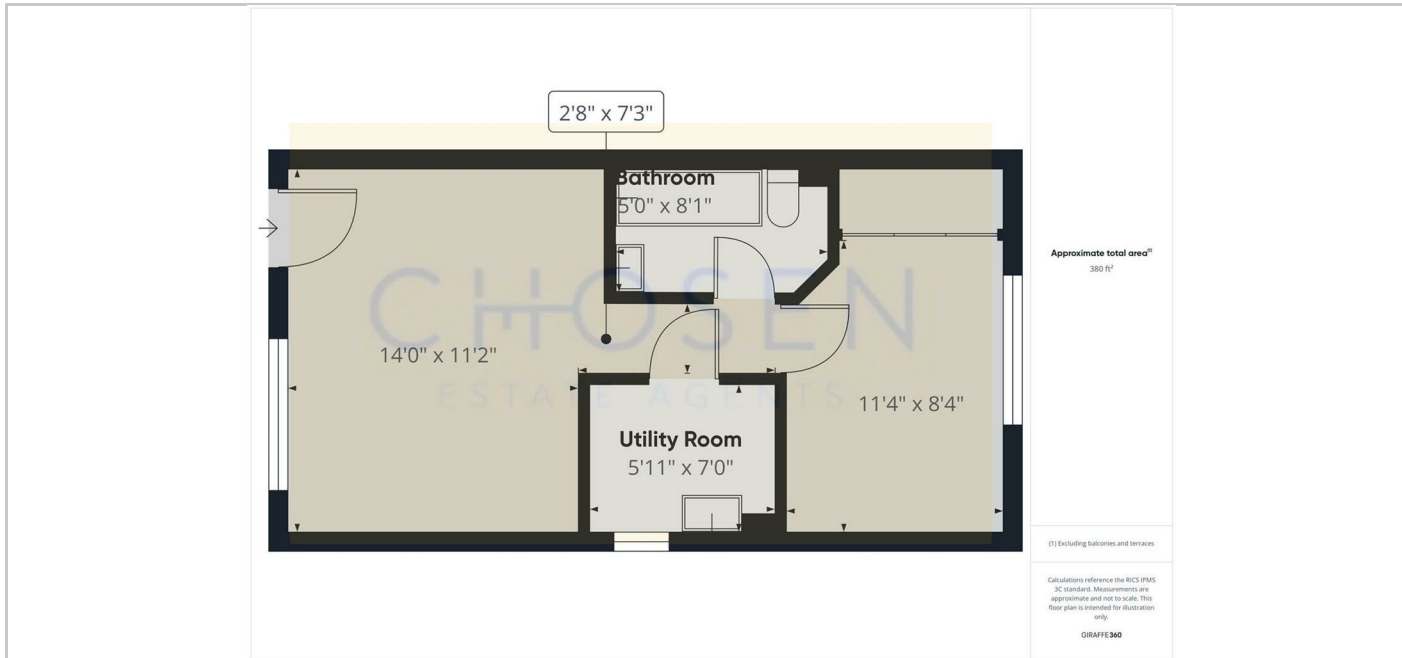
## THE PROPERTY

Chosen Estate Agents are delighted to advertise a well-presented ground floor one-bedroom apartment on popular Parton Road, Churchdown. Property offers new carpets, freshly painted white, and white goods including washing machine, fridge freezer and cooker. The property features a separate newly fitted kitchen and lounge, double bedroom with fitted wardrobe, and a bathroom with bath and shower. Parking is available on a first come, first serve basis. Suitable for single working professionals only. Sorry, no pets.

Holding Deposit: £173.00 based on 1 weeks' rent of asking price  
 Security Deposit: £865.00 based on 5 weeks' rent of asking price  
 Council Tax band: A Local Authority: Tewkesbury Borough Council  
 EPC Band: D

Electricity supply: Mains Gas Supply: No gas Water supply: Mains  
 Sewerage: Mains  
 Heating: Electric Heating Mobile phone coverage: i.e EE, Vodafone, Three, O2

If satisfactory references are not obtained or you withdraw your application any financial loss to Chosen Estate Agents or the Landlord will be deducted from your holding deposit. If you or your guarantor provides information that is inaccurate, false, incomplete, or adverse credit not being disclosed then we may retain your holding deposit and reject your application.



## SITUATION

### Directions