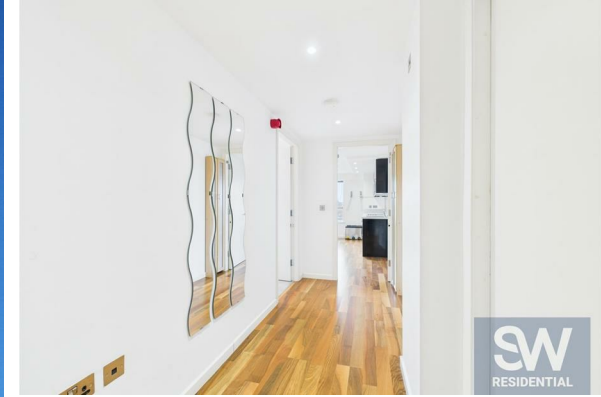




TO LET



SW
RESIDENTIAL



SW
RESIDENTIAL



SW
RESIDENTIAL

53 Whitehall Waterfront - 102789 Riverside Way, Leeds, West Yorkshire, LS1 4EE

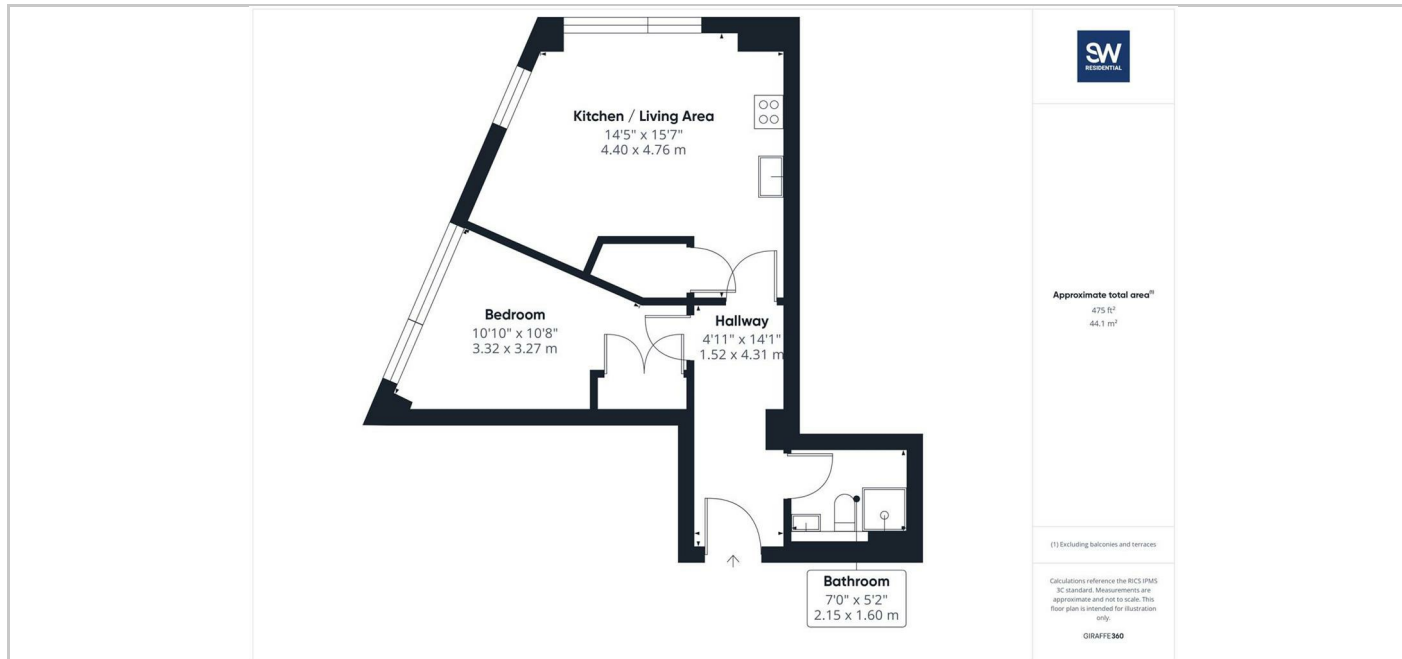
£900 PCM

SW
RESIDENTIAL

- One Bedroom
- Popular Development
- River and City Views
- Furnished
- Third Floor
- Central Location
- Council Tax Band C
- Available Mid July

THE PROPERTY

A light, spacious one bedroom apartment situated within the heart of Leeds' Business district. This property comprises a light open plan living area, kitchen with integrated appliances, a spacious double bedroom and house shower room. Located at the popular Whitehall Waterfront development, the property benefits from being within a stones throw of shops, cafe's bars and restaurants and is also within easy walking distance to Leeds train station. Furnished, Available Mid July



SITUATION

Directions

6th Floor Central Square, 29 Wellington Street, West Yorkshire, LS1 4DL
Tel: 0113 221 6000 Email: residential@sw.co.uk