

# Philpots Close

Yiewsley • Middlesex • UB7 7RY  
PCM: £1,750 PCM



coopers  
est 1986

A well presented and spacious two bedroom end terrace house to rent located within walking distance to West Drayton High Station and High Street. The property also provides easy access to Heathrow Airport, Stockley Buisness Park, Hillingdon Hospital and the M4/M25 Motorways.

Features include two bedrooms, spacious lounge, modern kitchen, newly refurbished bathroom, gas central heating, allocated parking and great storage throughout.

End Terrace House

Two Bedrooms

Spacious Lounge

Modern Bathroom

Large Kitchen

Allocated Parking

Gas Central Heating

Elizabeth Line

West Drayton Station/High Street

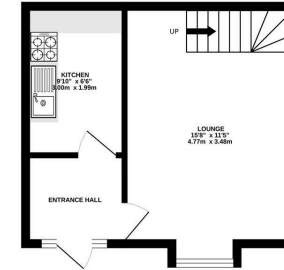
M4/M25 Motorway Access

Available Date

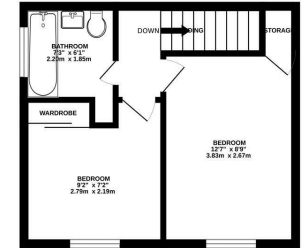
4th April 2026



GROUND FLOOR  
287 sq.ft. (26.7 sq.m.) approx.



1ST FLOOR  
282 sq.ft. (26.2 sq.m.) approx.



TOTAL FLOOR AREA: 569 sq.ft. (52.8 sq.m.) approx.  
Whilst every attempt has been made to ensure the accuracy of the description contained here, measurements of doors, windows, rooms and any other items are approximate and no responsibility is taken for any error, omission or mis-statement. This plan is for illustrative purposes only and should be used as such for any prospective purchaser. The services, systems and appliances shown have not been tested and no guarantee as to their operability or efficiency can be given.  
Made with floorplan123.com

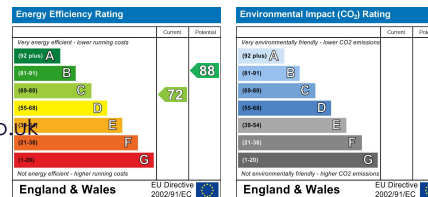


01895 257 566

1 Vine Street, Uxbridge,  
Middlesex, UB8 1QE

propertymanagement@coopersresidential.co.uk

CoopersResidential.co.uk



Important Notice: These particulars, whilst believed to be accurate are set out as a general outline only for guidance and do not constitute any part of an offer or contract. Intending purchasers should not rely on them as statements or representation of fact, but must satisfy themselves by inspection or otherwise has the authority to make or give any representation or warranty in respect of the property.

coopers  
est 1986