



Luscombe Maye

Since 1873

Bourton Lane, Totnes
Guide Price £650,000

🛏️ 4 🚿 2 🚗 1



DESCRIPTION

Luscombe Maye are delighted to bring to market this beautifully presented four bedroom Semi Detached home which offers charm, comfort and privacy. Ideally located near essential amenities, schools, and transport links, it allows a superb lifestyle opportunity for families and commuters alike. This home is extremely versatile and offers great potential to extend (STPP).

Internally, the spacious open-plan lounge and dining area is bright, airy, and perfect for both relaxing and entertaining. Large sliding glass doors flood the space with natural light and provide direct access to the garden. The adjoining kitchen boasts ample storage, and a large window above the sink fills the space with sunshine. The ground floor bathroom features a roll top bath with overhead shower.

Upstairs offers two bright and spacious double bedrooms, a versatile single bedroom, and the master suite at the front of the property. The main bedroom offers breathtaking views from the moorland across to rolling hills and mature trees, and is finished with an ensuite with double shower.

The exterior is well maintained, and provides a seamless indoor-outdoor flow.

Outside, the sunny garden is mainly laid to lawn and framed by mature trees and shrubs, offering privacy and a peaceful setting for outdoor living. With moorland views beyond and potential for off-street parking, subject to planning, this home is as practical as it is picturesque.

DIRECTIONS

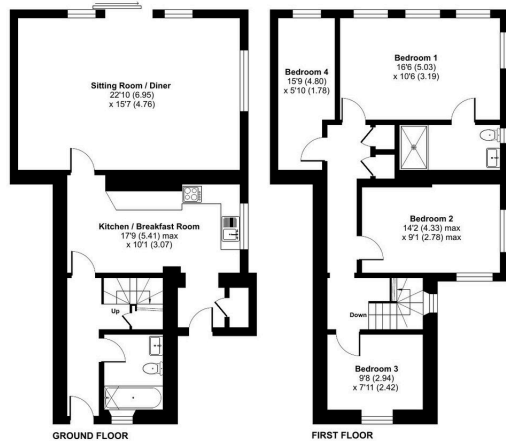
What3Words - noble.witty.consults





Bourton Lane, Totnes, TQ9

Approximate Area = 1414 sq ft / 131.3 sq m
For identification only - Not to scale



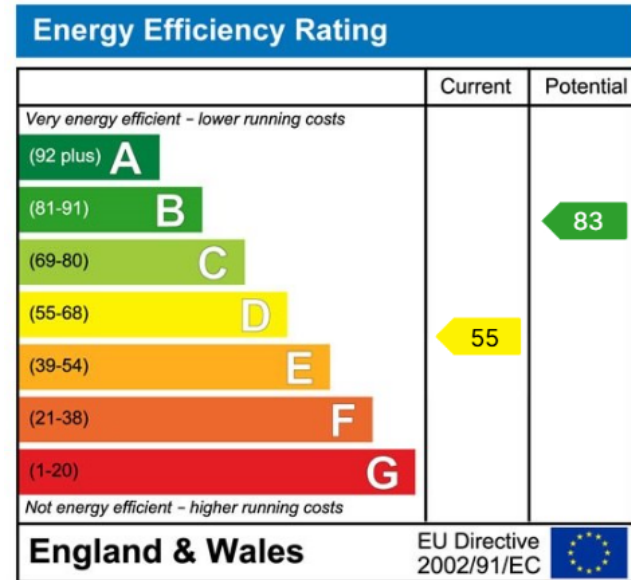
Floor plan produced in accordance with RICS Property Measurement 2nd Edition, incorporating International Property Measurement Standards (IPMS2 Residential). ©richcom 2025. Produced for Luscombe Maye. REF: 1297219



- Semi Detached House
- Sunny spacious Garden
- Indoor/ Outdoor Living
- Walking Distance to Totnes Town
- 4 Bedrooms
- Private Plot
- Picturesque Views
- Sought After Location
- Walking Distance To Totnes Train Station
- Potential To Create Parking (STP)



Use the QR code for further "Material Information" about this home



Totnes:
59 Fore Street, Totnes TQ9 5NJ
01803 869920
totnes@luscombemaye.com
www.luscombemaye.com

Important Notice: Luscombe Maye gives notice that: 1. These particulars do not constitute an offer or contract or part thereof. 2. All descriptions, photographs and plans are for guidance only and should not be relied upon as statements or representations of fact. All measurements are approximate and not necessarily to scale. Any prospective purchaser must satisfy themselves of the correctness of the information within the particulars by inspection or otherwise. 3. Luscombe Maye does not have any authority to give any representations or warranties whatsoever in relation to this property (including but not limited to planning/building regulations), nor can it enter into any contract on behalf of the Vendor.