



## Key Features

- ◆ Two-bedroom, second-floor flat
- ◆ Just off Eastbourne town centre
- ◆ Balcony with sea views
- ◆ Minutes from shops and seafront
- ◆ Walking distance from train station
- ◆ EPC rating D



Seaside Road, Town Centre, Eastbourne

£1,000 PCM



Northwood are delighted to welcome to market this two-bedroom, second-floor apartment just off Eastbourne town centre.

Accommodation comprises: living room, kitchen, two bedrooms and bathroom.

Further benefits include electric heaters, double-glazing, secure entry-phone and sea-facing balcony.

Located just off Eastbourne town centre, minutes from the shops and a little further to the train station, this lovely second-floor flat is only a stone's throw from the pier and Eastbourne's fabulous Victorian seafront.





Please view our immersive virtual tour to fully appreciate this fantastic property:  
<https://tour.giraffe360.com/aab6b8f1c5cc4172af16ac559942b311>

Mobile Phone Coverage and Broadband speeds can be checked on the Ofcom website:  
<https://checker.ofcom.org.uk/>

Council Tax Band B: £2064

Holding Deposit: £230.76 (equivalent to one week's rent)

Full Deposit: £1153.84 (holding deposit + equivalent of four weeks' rent)

1st month's rent + Full Deposit: £2153.84

Total household income must exceed £30,000.00 to be considered for this property.

This property is managed by Northwood, should a maintenance issue arise, it can be reported 24 hours a day via our website.





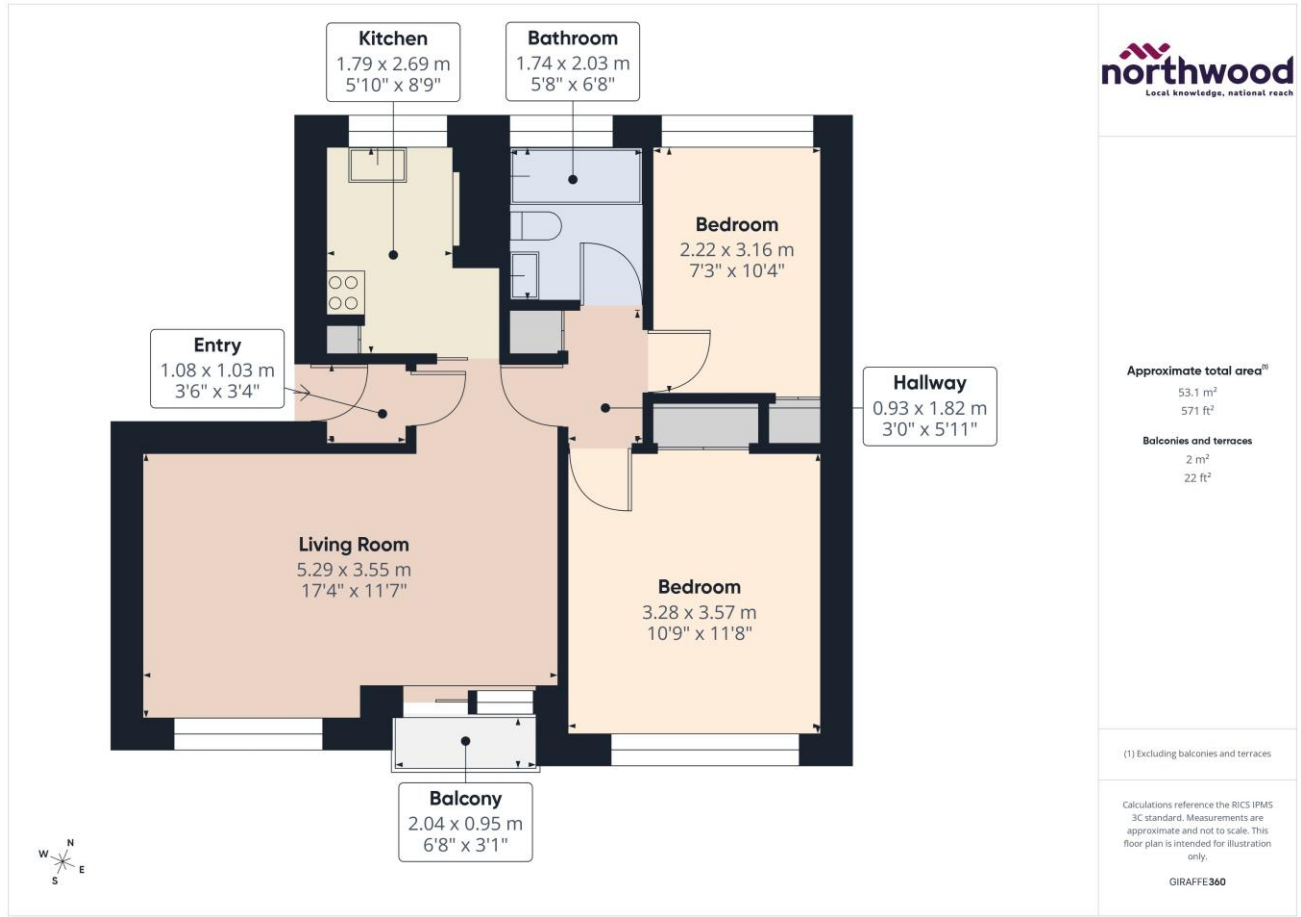


Imagery ©2025 Google, Imagery ©2025 Airbus, Maxar Technologies, Map data ©2025



Imagery ©2025 Google, Imagery ©2025 Airbus, Maxar Technologies, Map data ©2025





**Approximate total area<sup>(1)</sup>**  
53.1 m<sup>2</sup>  
571 ft<sup>2</sup>

**Balconies and terraces**  
2 m<sup>2</sup>  
22 ft<sup>2</sup>

(1) Excluding balconies and terraces

Calculations reference the RICS IPMS 3C standard. Measurements are approximate and not to scale. This floor plan is intended for illustration only.

GIRAFFE 360



**Northwood**  
81-83 South Street  
Eastbourne  
BN21 4LR  
01323 744544  
eastbourne@northwooduk.com

