



St. Stephens Avenue, W12

£950,000

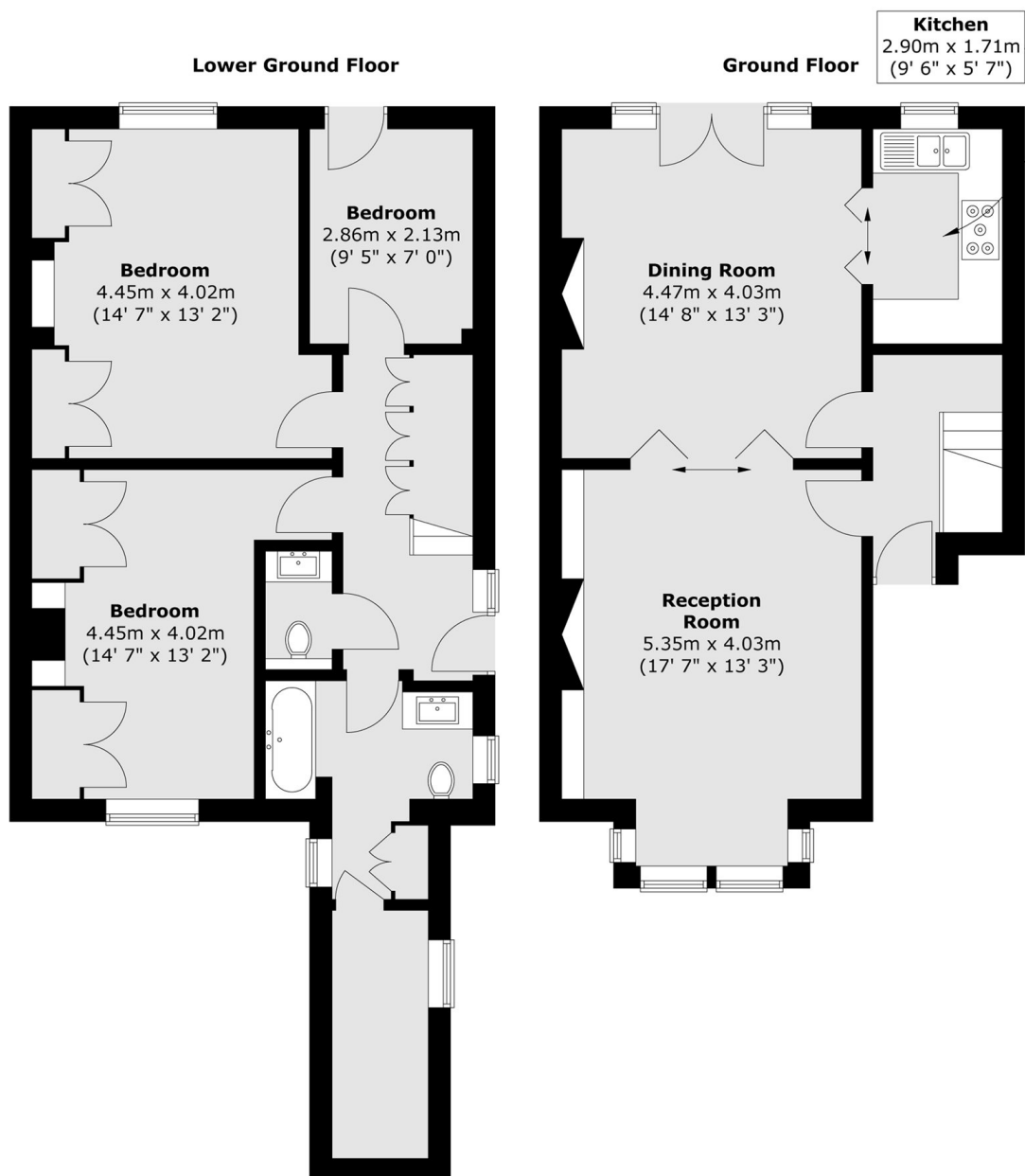
This charming three bedroom maisonette combines period character with practical living space, featuring a generous double reception room, large sash windows that flood the interior with natural light, and direct access to a private garden. The property further benefits from a separate utility room.

Ideally situated on St Stephens Avenue, the property is approximately 0.5 miles from Shepherd's Bush station (Hammersmith & City line) and is within easy reach of Westfield London and the renowned Soho House White City.

Features

- No Onward Chain
- Three Double Bedrooms
- Private Garden
- Double Reception Room
- Westfields Shopping Centre
- Soho House

St. Stephens Avenue, London, W12



Total area (approx.) : 110.2 sq. m (1186 sq. ft)