



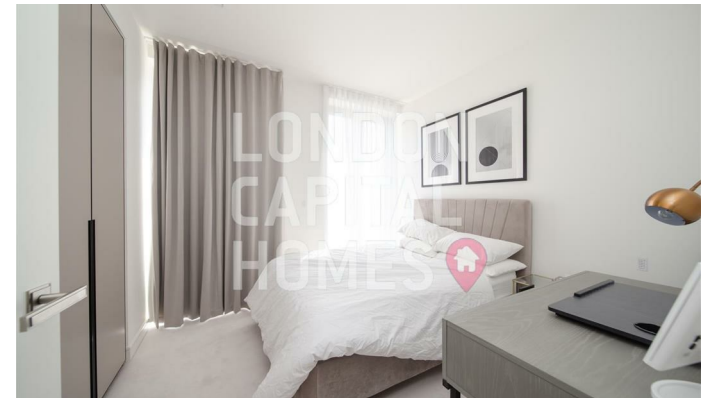
## Lincoln Square, 18 Portugal Street

, London WC2A 2AT

- Two-bedroom, two-bathroom apartment
- Entertaining or relaxing while enjoying city views
  - Swimming pool
  - Private cinema
  - EPC-B
- Open-plan living and dining area
  - Underfloor heating
  - Spa and sauna
  - 24-hour concierge service
  - CTB-G

**£8,500 Per Month**

Local Authority **Westminster**  
Council Tax Band **G**  
EPC Rating **B**



**London Office Office**

Spaces Victoria, 25 Wilton Road, Pimlico,  
London, SW1V 1LW

**Contact**

020 3084 3094  
[XL@londonvictoriagroups.co.uk](mailto:XL@londonvictoriagroups.co.uk)  
[www.londonvictoriagroups.co.uk](http://www.londonvictoriagroups.co.uk)

Agents Note: Whilst every care has been taken to prepare these particulars, they are for guidance purposes only. All measurements are approximate and for general guidance purposes only and whilst every care has been taken to ensure accuracy, they should not be relied upon and potential buyers/tenants are advised to recheck the measurements.