



Plough Way, SE16

£2,500 Per calendar month

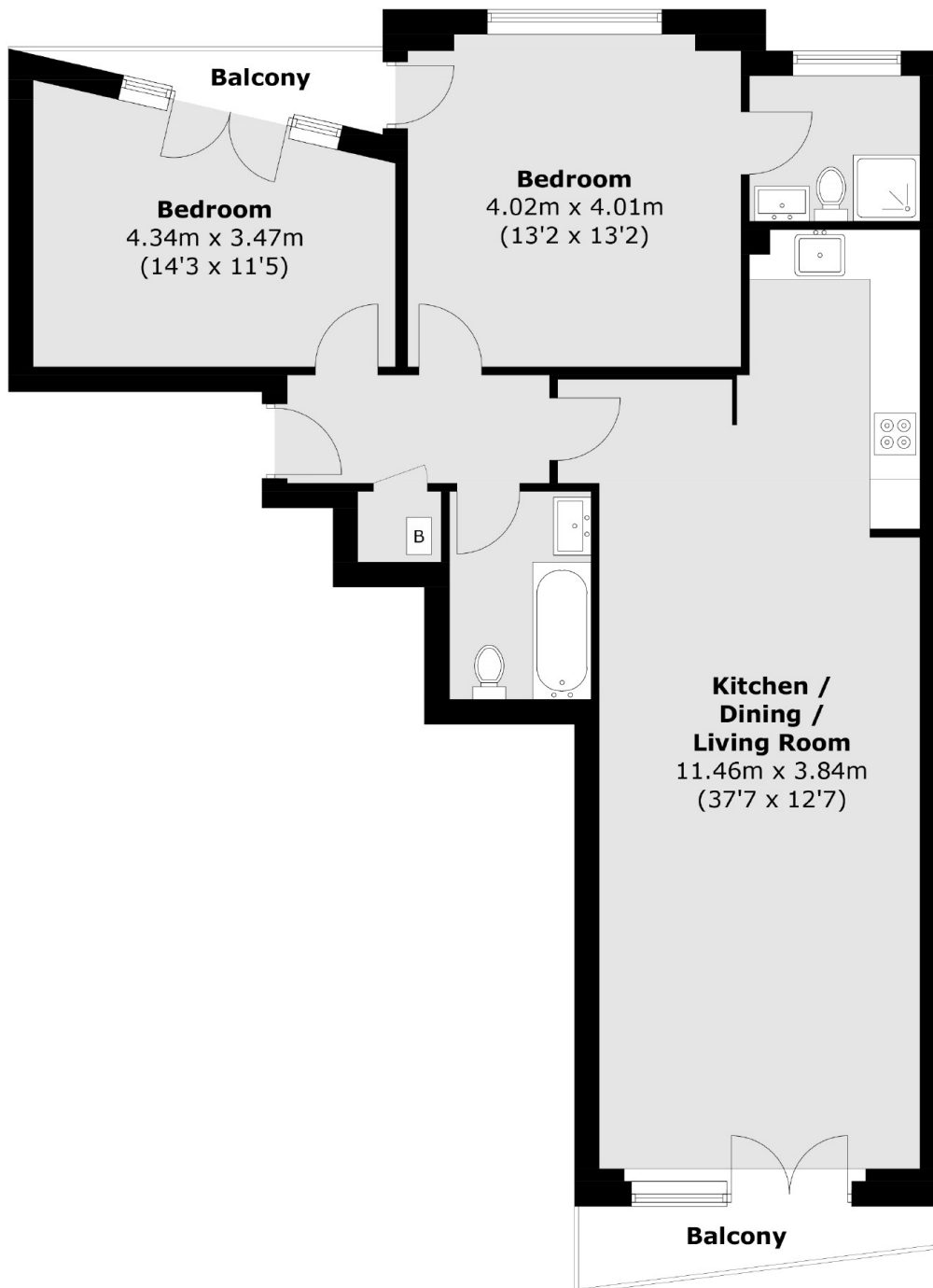
Set in a secure development in Surrey Quays. There are two double bedrooms, two bathroom, a large open plan living room / kitchen and views of the Shard and St Paul's Cathedral.

Iceland Wharf is located in the heart of Surrey Quay. Transport options include the underground and overground as well as numerous bus links. There are also plenty of local amenities at Surrey Quays Shopping Centre.

Features

- Two Double Bedrooms
- Two Bathrooms
- Balcony
- Furnished
- Gated Development
- Spacious

Plough Way, London, SE16



Total area (approx.): 85.8 sq. m (923.5 sq. ft)
Balcony: 5.3 sq. m (57.0 sq. ft)