



144, Newland Gardens, Hertford  
SG13 7WY

Price Guide £289,995



[stevenoates.com](http://stevenoates.com)





## 144 Newland Gardens, Hertford, SG13 7WY

Steven Oates are delighted to offer this 2 double bedroom second floor apartment situated in a popular turning, convenient for Hertford Town Centres multiple shopping facilities and transport links into London. The apartment benefits from a modern fitted kitchen with integrated appliances, living room leading out on to sit out balcony, an en-suite to master bedroom, additional 'jack and jill' bathroom, lift to all floors, 900 plus year lease and secure underground allocated parking. Chain Free

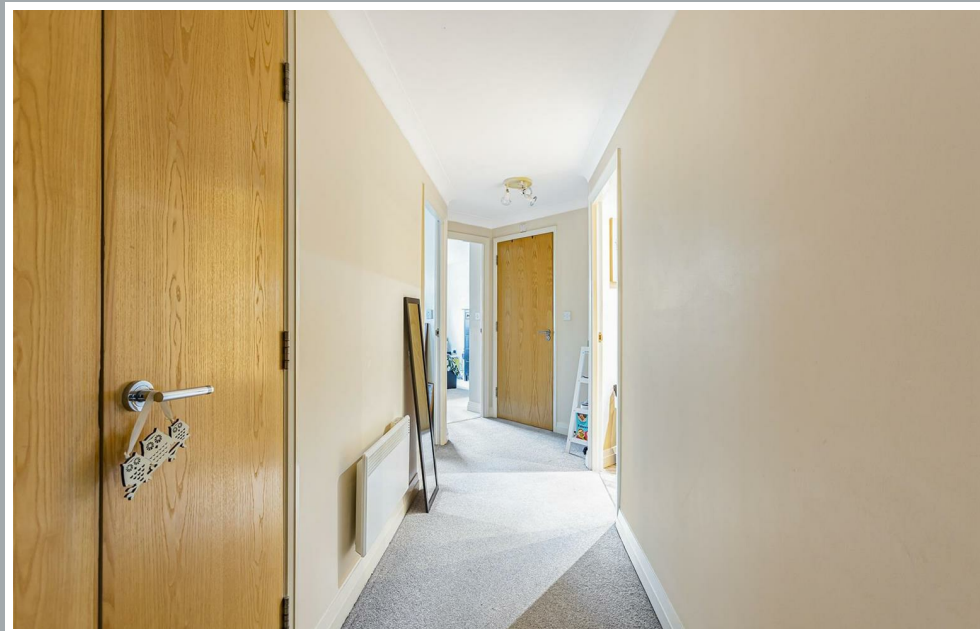
The apartment is within a sought after residential development which benefits from a resident's gym and well kept communal gardens. The development is located only a short distance from Hertford town centre and Hertford East mainline train station which provides a regular service to London's Tottenham Hale and Liverpool Street.





70 Fore Street, Hertford, Hertfordshire, SG14 1BY





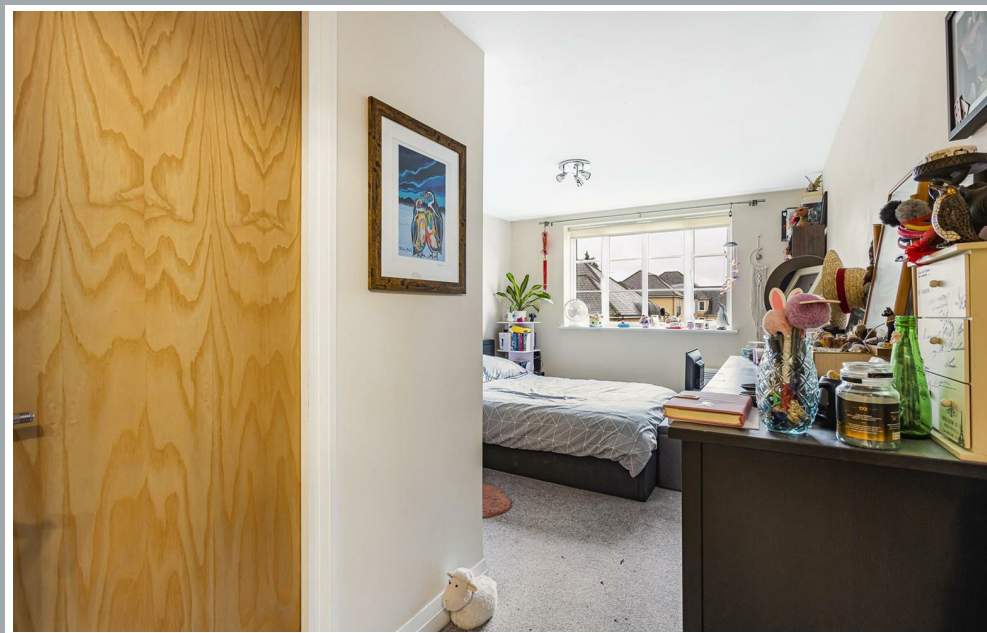
70 Fore Street, Hertford, Hertfordshire, SG14 1BY





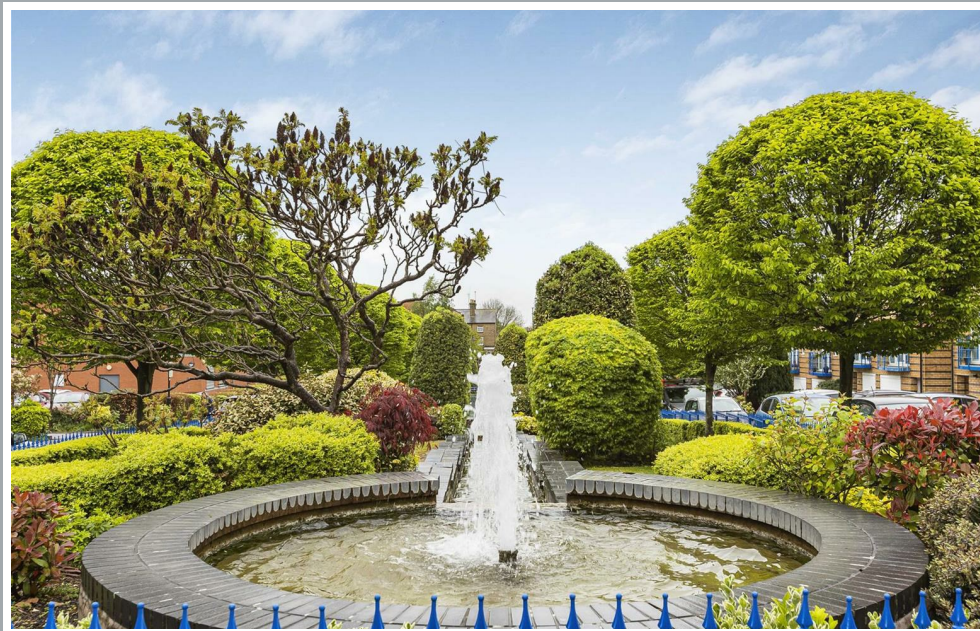
70 Fore Street, Hertford, Hertfordshire, SG14 1BY





70 Fore Street, Hertford, Hertfordshire, SG14 1BY

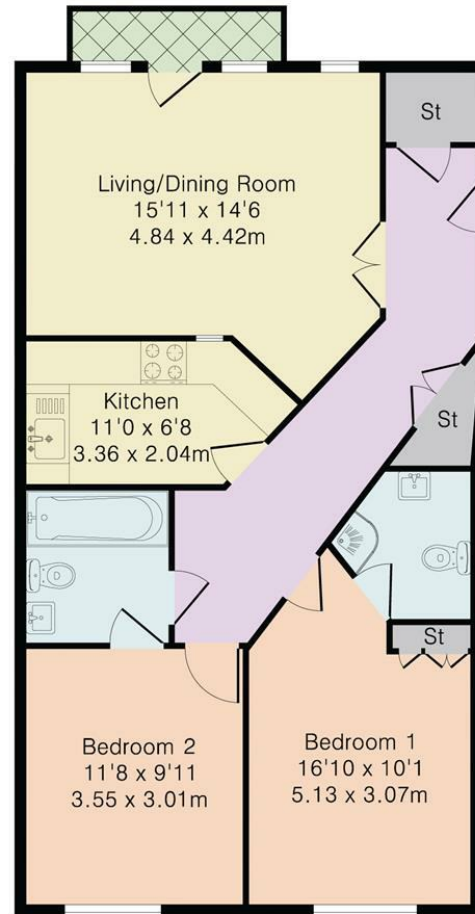




70 Fore Street, Hertford, Hertfordshire, SG14 1BY



Approximate Gross Internal Area 786 sq ft – 73 sq m



Second Floor

These particulars, whilst believed to be accurate are set out as a general outline only for guidance and do not constitute any part of an offer or contract. Intending purchasers should not rely on them as statements of representation of fact, but must satisfy themselves by inspection or otherwise as to their accuracy. No person in this firm's employment has the authority to make or give any representation or warranty in respect of the property.



[stevenoates.com](http://stevenoates.com)