



GLADSTONE TERRACE, SW8

£500,000

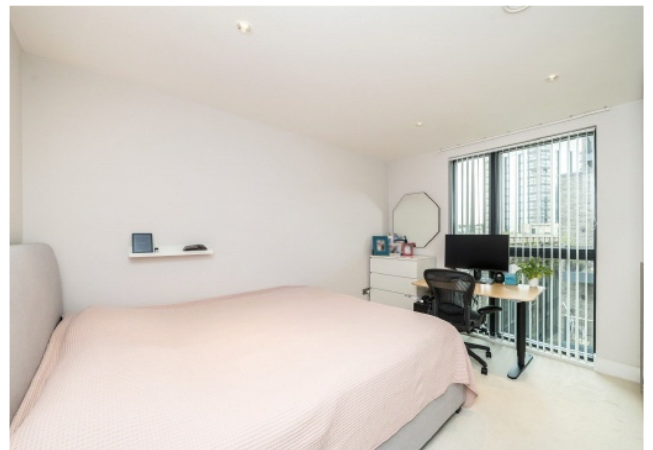
An impressive two double bedroom lateral apartment situated on Gladstone Terrace in the heart of Battersea. Comprising an exceptionally large open plan reception room/kitchen, modern family bathroom and private winter garden.

- Offers Over £500,000
- Two Double Bedrooms
- 806 SqFt
- Private Winter Garden
- 24 Hour Gym & Concierge
- 0.4 Miles Battersea Power

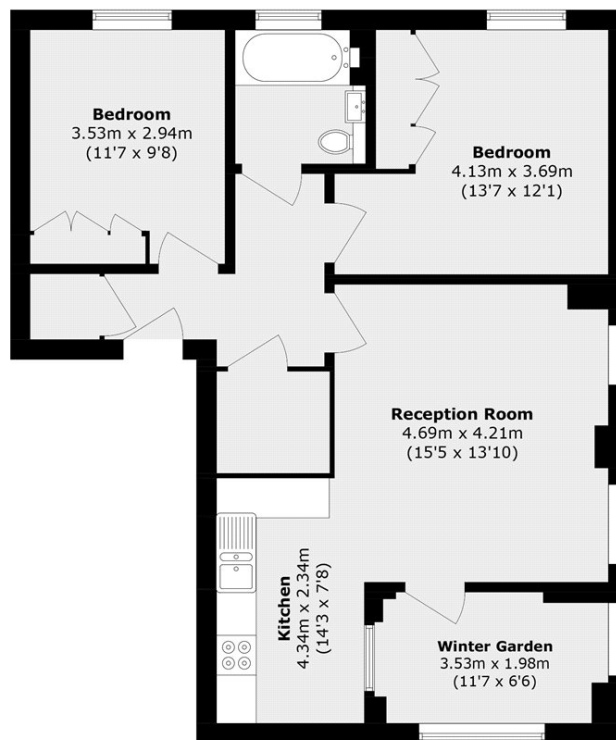


ABOUT THE HOME

Gladstone Terrace offers excellent transport links to the rest of London. The nearby overground provides access into Waterloo & Victoria with the nearby tube (Northern Line) getting you into the City & Central London. Battersea Park and the Battersea Power Station development are a short stroll away.







Total area (approx.): 74.9 sq. m (806.2 sq. ft)

LiFE RESIDENTIAL

11 Flagstaff House, London,
SW8 2LZ

Sales: 020 7476 1408

Lettings: 020 7582 7989

Energy Rating: B. We aim to make our particulars both accurate and reliable. However they are not guaranteed; nor do they form part of an offer or contract. If you require clarification on any points then please contact us, especially if you're traveling some distance to view. Please note that appliances and heating systems have not been tested and therefore no warranties can be given as to their good working order.