

SPICE QUAY HEIGHTS, SE1

£4,000 pcm

Perched on the 7th floor of the prestigious Spice Quay Heights, this expansive residence offers a front-row seat to the Thames. The stylish interior features a Juliet balcony with enviable river views, blending modern luxury with a prime position in the heart of London's most iconic waterfront.

- Shad Thames Location
- Fully Furnished
- 24-Hour Concierge
- Gym, Sauna & Swimming Pool
- Spectacular River Views
- Secure Parking Available



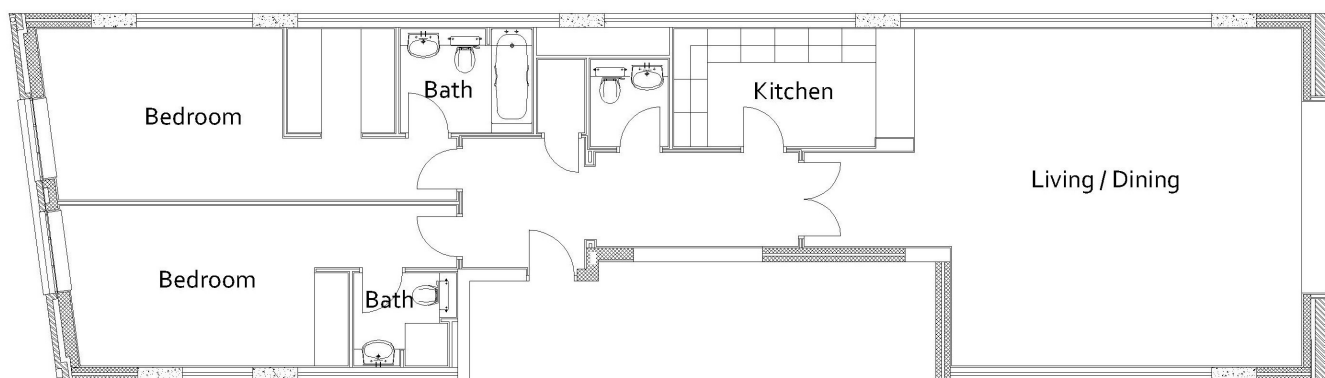
ABOUT THE HOME

Spanning over 1,116 sq. Ft., this high-specification apartment features an exceptionally large reception and dining room with sophisticated wooden flooring and comfort cooling. Both generous double bedrooms include built-in wardrobes and deluxe en-suite bathrooms, complemented by a modern kitchen and a guest W.C. Residents benefit from a 24-hour concierge and exclusive access to a private leisure centre featuring a gymnasium, indoor heated swimming pool, and spa, with secure underground parking available via separate negotiation.

Nestled among the historic cobblestones of Shad Thames, the property is surrounded by an elite collection of waterside bars and fine-dining restaurants. The location is a commuter's dream, situated within close proximity to London Bridge and Tower Hill stations. This provides effortless access to the City, Canary Wharf, and the West End, offering the perfect balance of historic charm and modern urban connectivity.







AREA: 115.30 sq.m

LiFE RESIDENTIAL

252 Westminster Bridge
Road, London, SE1 7PD
Sales: 020 7476 0125
Lettings: 020 7620 1600

Energy Rating: D. We aim to make our particulars both accurate and reliable. However they are not guaranteed; nor do they form part of an offer or contract. If you require clarification on any points then please contact us, especially if you're traveling some distance to view. Please note that appliances and heating systems have not been tested and therefore no warranties can be given as to their good working order.